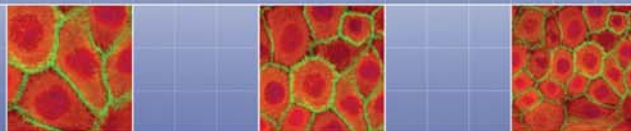


## 3D In Vitro Skin Models



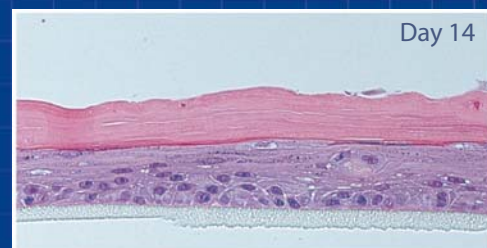
### Grow your own 3D epidermis using our New 3D Keratinocyte Culture Kits!

Convenient 3D Keratinocyte Starter Kits are now available with everything you need to create 3D epidermal in vitro models easily and reliably in your own lab, to your own schedule. All kits contain our new **3D Prime** culture medium, which was specifically developed for the unique demands of 3D models using our proven signaling-based approach.

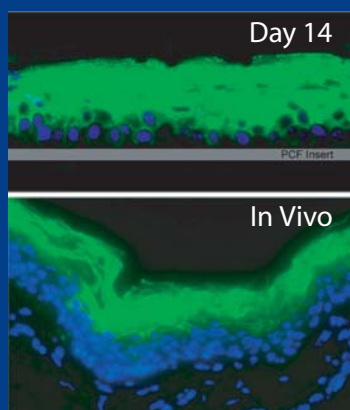
3D Starter Kits contain:

- HPEK primary keratinocytes with 500 mL PCT medium
- CnT-02-3DP **3D Prime** culture medium
- PCF Inserts, stain, and complete protocol

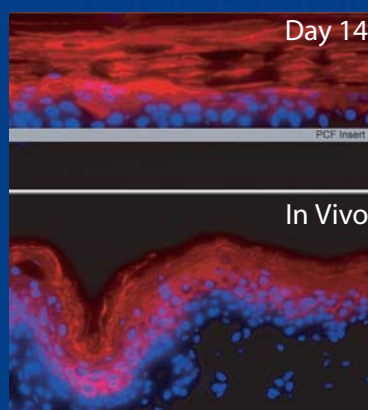
As seen in the images (right), these components develop an accurate 3D model with all epidermal layers (stratum corneum, granulosum, spinosum, basale).



3D epidermal model established using HPEK keratinocytes, CnT-02-3DP medium, and PCF inserts. H&E staining.



Involucrin staining (green):  
stratum corneum, granulosum.



K10 staining (red): stratum  
corneum, granulosum, spinosum.

Full protocols for the establishment of this model, and for common techniques such as histological sectioning and staining can be found on the CELLnTEC website.

In addition, our experienced scientists are available for technical questions and troubleshooting.

For more information about this model please visit our website, or contact our specialists directly via email:

[scientist@cellntec.com](mailto:scientist@cellntec.com)