



Cell Proliferation

MBL[®]
International Corporation

Products and Solutions to Advance Scientific Discoveries™

For research use only

Cell Cycle-Related Antibodies

Cyclin and CDKs

CDK Inhibitors

RB Family, E2F/DP Family

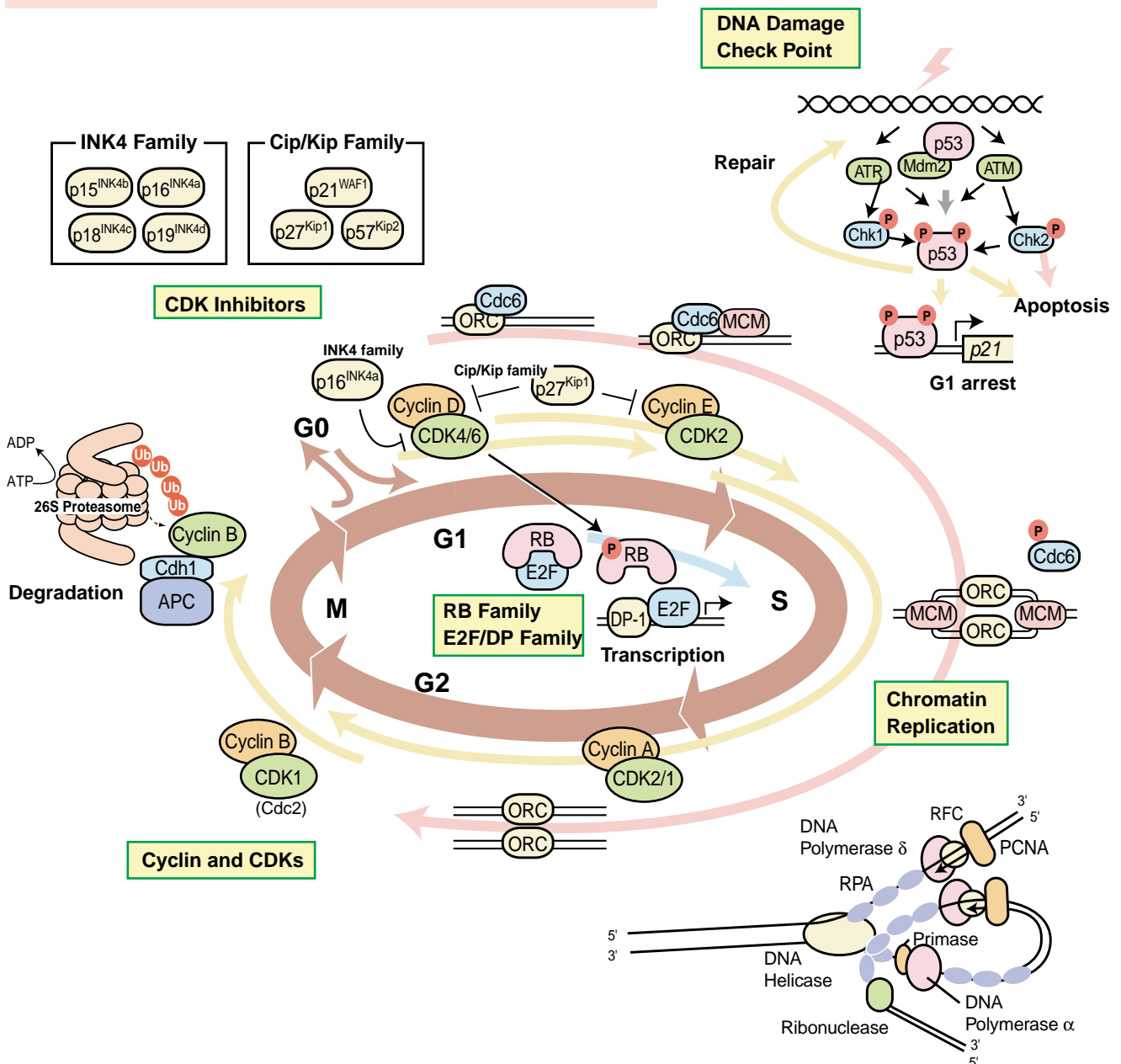
DNA Damage Checkpoint

DNA Replication Checkpoint

Chromatin Replication

Other Cell Cycle-Related Proteins

Trial Size Antibody List



To order or for more information, go to www.mblintl.com

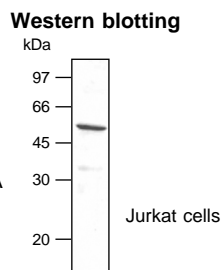
MBL[®] International Corporation

Cell proliferation and progression through the cell cycle are controlled by activation and deactivation of protein kinase complexes. Cyclin dependent kinases (Cdks) are critical regulators of cell proliferation that comprise the catalytic subunit of the cell cycle kinases. The Cdks associate with specific regulatory subunits (cyclins) to form an active complex. Cdks are constitutively expressed throughout the cell cycle, while the expression and stability of the cyclins fluctuate depending on the stage of the cell cycle. Transition through the cell cycle is controlled by the sequential phosphorylation or dephosphorylation of Cdks and by proteolysis of cyclins.

Cyclin A	Cdk1/Cdc2
Cyclin B1	Cdk2
Cyclin D1	Cdk4
Cyclin D2	Cdk6
Cyclin D3	Cdk7
Cyclin E	GAK

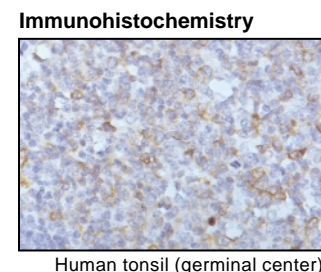
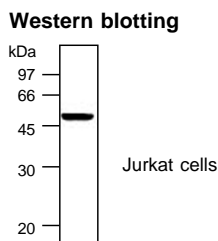
Cyclin A (Clone : E23.1)

Code No.: K0162-3
Clone: E23.1
Subclass: Mouse IgG2a
Quantity: 100 µg
Immunogen: Recombinant bovine Cyclin A
Species: Human, Mouse, Rat
Application: Western blotting



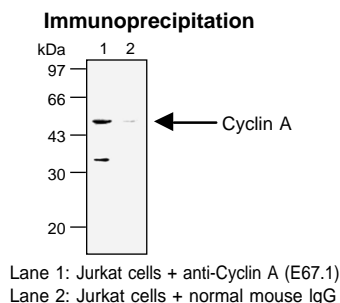
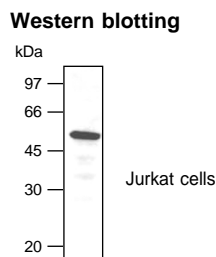
Cyclin B1 (Clone : V152)

Code No.: K0128-3
Clone: V152
Subclass: Mouse IgG1
Quantity: 100 µg
Immunogen: Recombinant human Cyclin B1
Species: Human, Mouse, Rat, Hamster
Application: Western blotting
Immunocytochemistry
Immunohistochemistry
(Heat treatment is necessary for paraffin embedded sections)



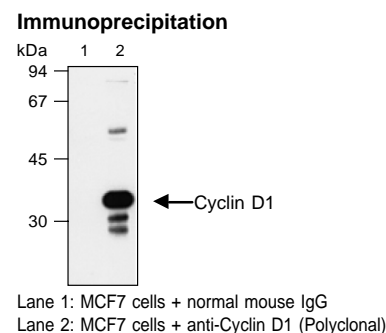
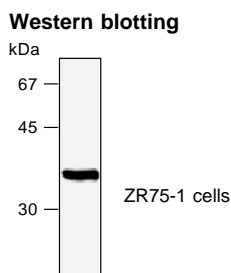
Cyclin A (Clone : E67.1)

Code No.: K0163-3
Clone: E67.1
Subclass: Mouse IgG2a
Quantity: 100 µg
Immunogen: Recombinant bovine Cyclin A
Species: Human, Mouse, Rat(-)
Application: Western blotting
Immunoprecipitation



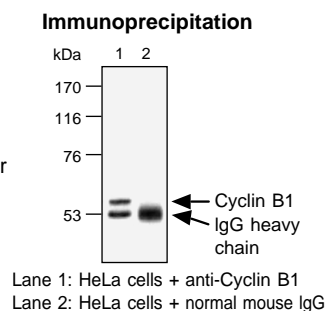
Cyclin D1 (Polyclonal)

Code No.: 553
Clone: Polyclonal
Subclass: Rabbit Ig
Quantity: 100 µg
Immunogen: Synthetic peptide corresponding to a.a. 276-295 of human Cyclin D1
Species: Human, Mouse
Application: Western blotting
Immunoprecipitation
Immunocytochemistry



Cyclin B1 (Clone : V92.1)

Code No.: K0164-3
Clone: V92.1
Subclass: Mouse IgG1
Quantity: 100 µg
Immunogen: Recombinant hamster Cyclin B1
Species: Human, Mouse
Application: Immunoprecipitation

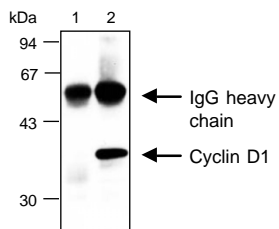


To order or for more information, go to www.mblintl.com

Cyclin D1 (Clone : DCS-6)

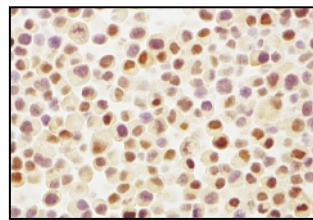
Code No.: K0062-3 **Also available;**
K0062-3S: 10 µg Trial Size
MD-17-3 (Clone : 5D4): 100 µg
 Clone: DCS-6
 Subclass: Mouse IgG2a
 Quantity: 100 µg
 Immunogen: Full-length recombinant human Cyclin D1 protein
 Species: Human, Mouse, Rat
 Application: Western blotting
 Immunoprecipitation
 Immunohistochemistry
 (Heat treatment is necessary for paraffin embedded sections)

Immunoprecipitation



Lane 1: ZR75-1 cells + normal mouse IgG
 Lane 2: ZR75-1 cells + anti-Cyclin D1 (DCS-6)

Immunocytochemistry



ZR75-1 cells

Cyclin D3

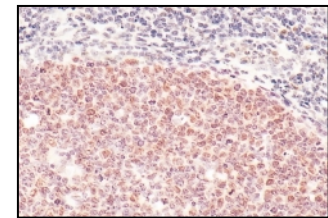
Code No.: K0013-3 **Also available;**
K0013-3S: 10 µg Trial Size
K0013-1: 0.2 mL (Supernatant)
 Clone: DCS-22
 Subclass: Mouse IgG1κ
 Quantity: 100 µg
 Immunogen: Recombinant full length human Cyclin D3
 Species: Human, Mouse, Rat
 Application: Western blotting
 Immunoprecipitation
 Immunohistochemistry
 (Heat treatment is necessary for paraffin embedded sections)

Immunoprecipitation



Lane 1: MCF7 cells + normal mouse IgG
 Lane 2: MCF7 cells + anti-Cyclin D3

Immunohistochemistry

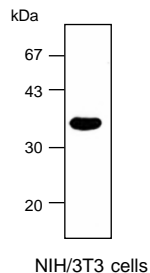


Human tonsil (germinal center)

Cyclin D2 (Clone : DCS-5)

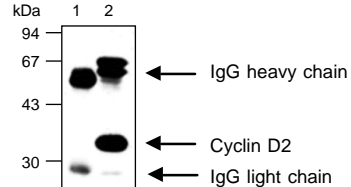
Code No.: K0064-3 **Also available;**
K0064-3S: 10 µg Trial Size
K0063-3 (Clone : DCS-3): 100 µg
 Clone: DCS-5
 Subclass: Mouse IgG2b
 Quantity: 100 µg
 Immunogen: Full-length recombinant human Cyclin D2 protein
 Species: Human, Mouse
 Application: Western blotting
 Immunoprecipitation

Western blotting



NIH/3T3 cells

Immunoprecipitation

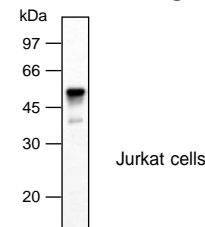


Lane 1: NIH/3T3 cells + normal mouse IgG
 Lane 2: NIH/3T3 cells + anti-Cyclin D2 (DCS-5)

Cyclin E

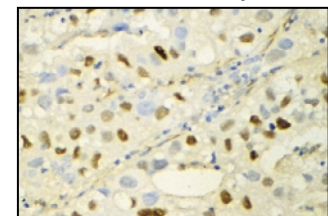
Code No.: K0172-3
 Clone: HE12
 Subclass: Mouse IgG2b
 Quantity: 100 µg
 Immunogen: Recombinant human Cyclin E
 Species: Human, Mouse(-), Rat(-)
 Application: Western blotting
 Immunocytochemistry
 Immunohistochemistry
 (Heat treatment is necessary for paraffin embedded sections)

Western blotting



Jurkat cells

Immunohistochemistry



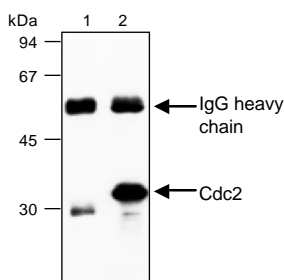
Human lung cancer

Cdk1/Cdc2

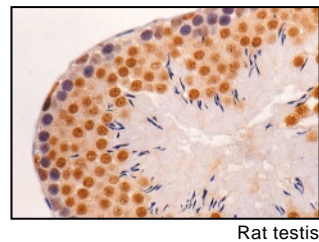
Code No.: MT-19-3
 Clone: 5F6
 Subclass: Mouse IgG1
 Quantity: 100 µg
 Immunogen: Synthetic peptide corresponding to a.a. 30-57 of human Cdk1
 Species: Human, Mouse, Rat, Rabbit
 Application: Western blotting
 Immunoprecipitation
 Immunohistochemistry

**Also available;
 MT-19-3S: 10 µg Trial Size**

Immunoprecipitation



Immunohistochemistry

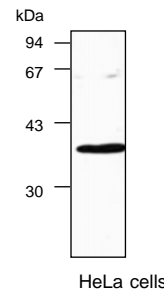


Cdk6

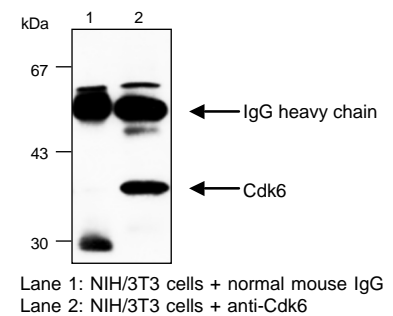
Code No.: K0066-3
 Clone: DCS-83
 Subclass: Mouse IgG1
 Quantity: 100 µg
 Immunogen: Recombinant Cdk6 protein
 Species: Human, Mouse, Rat
 Application: Western blotting
 Immunoprecipitation

**Also available;
 K0066-3S: 10 µg Trial Size**

Western blotting



Immunoprecipitation

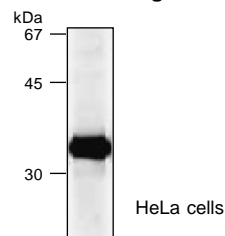


Cdk2

Code No.: MK-13-3
 Clone: 8A12
 Subclass: Mouse IgG1
 Quantity: 100 µg
 Immunogen: Recombinant Cdk2 protein
 Species: Human, Mouse
 Application: Western blotting

**Also available;
 MK-13-3S: 10 µg Trial Size**

Western blotting

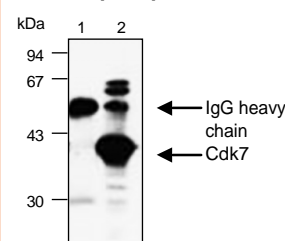


Cdk7

Code No.: K0068-3
 Clone: DCS-MO1
 Subclass: Mouse IgG2b
 Quantity: 100 µg
 Immunogen: Recombinant C-terminal 221 a.a. fragment of Cdk7 protein
 Species: Human, Rat
 Application: Western blotting
 Immunoprecipitation
 Immunohistochemistry
 (Heat treatment is necessary for paraffin embedded sections)

**Also available;
 K0068-3S: 10 µg Trial Size**

Immunoprecipitation



Immunohistochemistry

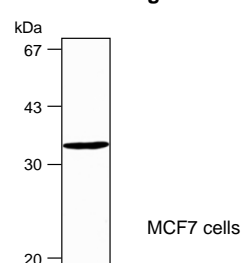


Cdk4

Code No.: K0065-3
 Clone: DCS-156
 Subclass: Mouse IgG1
 Quantity: 100 µg
 Immunogen: Recombinant Cdk4 protein
 Species: Human, Mouse
 Application: Western blotting

**Also available;
 K0065-3S: 10 µg Trial Size**

Western blotting



To order or for more information, go to www.mblintl.com

Cell cycle events are influenced by interactions with small proteins that bind to cyclins, Cdks, or cyclin-Cdk complexes, e.g., p16, p21 and p27^{Kip1}. Cyclin-dependent kinase inhibitors play important roles in cell cycle control by coordinating internal and external signals and impeding proliferation at several key checkpoints.

INK4 family

p15^{INK4b}
available soon
p16^{INK4a}
p18^{INK4c}
p19^{INK4d}

Cip1/Kip1 family

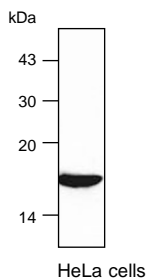
p21^{WAF1/CIP1}
p27^{Kip1}
p57^{Kip2}
available soon

p16^{INK4a}

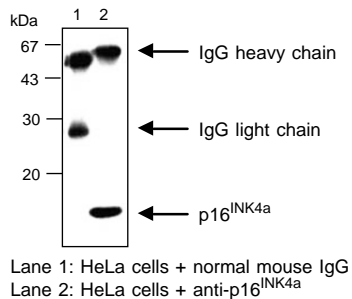
Code No.: K0077-3
Clone: DCS-50
Subclass: Mouse IgG1
Quantity: 100 µg
Immunogen: Purified recombinant His-tagged p16
Species: Human
Application: Western blotting
Immunoprecipitation

**Also available;
K0077-3S: 10 µg Trial Size**

Western blotting



Immunoprecipitation

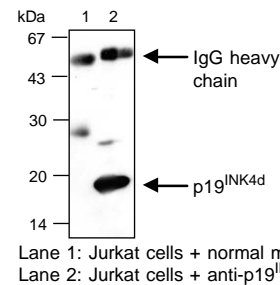


p19^{INK4d}

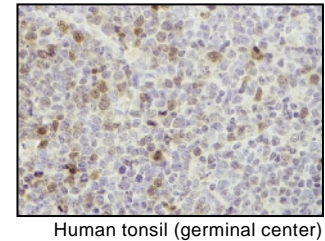
Code No.: K0080-3
Clone: DCS-100
Subclass: Mouse IgG1
Quantity: 100 µg
Immunogen: Purified recombinant full length GST-tagged p19^{INK4d}
Species: Human
Application: Western blotting
Immunoprecipitation
Immunohistochemistry
(Heat treatment is necessary for paraffin embedded sections)

**Also available;
K0080-3S: 10 µg Trial Size**

Immunoprecipitation



Immunohistochemistry

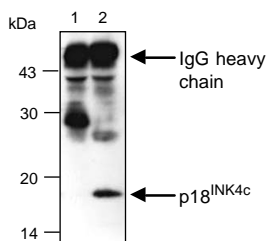


p18^{INK4c}

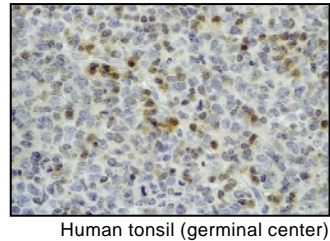
Code No.: K0079-3
Clone: DCS-118
Subclass: Mouse IgG2a
Quantity: 100 µg
Immunogen: Purified recombinant His-tagged p18
Species: Human
Application: Western blotting
Immunoprecipitation
Immunohistochemistry
(Heat treatment is necessary for paraffin embedded sections)

**Also available;
K0079-3S: 10 µg Trial Size**

Immunoprecipitation



Immunohistochemistry

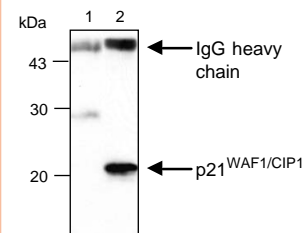


p21^{WAF1/CIP1}

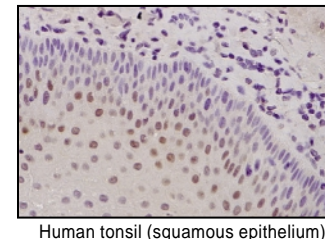
Code No.: K0081-3
Clone: DCS-60
Subclass: Mouse IgG2a
Quantity: 100 µg
Immunogen: Purified recombinant full length GST-tagged p21
Species: Human
Application: Western blotting
Immunoprecipitation
Immunohistochemistry
(Heat treatment is necessary for paraffin embedded sections)

**Also available;
K0081-3S: 10 µg Trial Size**

Immunoprecipitation



Immunohistochemistry

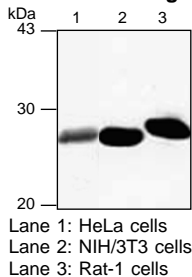


To order or for more information, go to www.mblintl.com

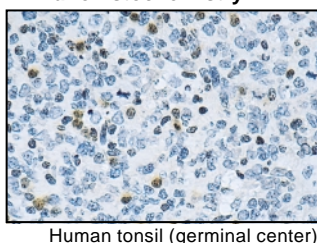
p27^{Kip1} (Clone : DCS-72)

Code No.: K0082-3 Also available;
K0082-3S: 10 µg Trial Size
 Clone: DCS-72
 Subclass: Mouse IgG1
 Quantity: 100 µg
 Immunogen: Recombinant mouse p27^{Kip1}
 Species: Human, Mouse, Rat
 Application: Western blotting, Immunohistochemistry
 (Heat treatment is necessary for paraffin embedded sections)

Western blotting



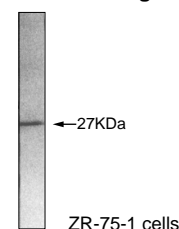
Immunohistochemistry



p27^{Kip1} (Polyclonal)

Code No.: 554
 Clone: Polyclonal
 Subclass: Rabbit Ig
 Quantity: 100 µg
 Immunogen: Recombinant mouse p27^{Kip1}
 Species: Human, Mouse
 Application: Western blotting
 Immunoprecipitation
 Immunocytochemistry
 Flow Cytometry

Western blotting



Antibodies to
RB Family, E2F/DP Family

The progression from G1 to S phase requires the expression of new proteins and enzymes involved in DNA replication. The coordinated regulation of S-phase genes is principally controlled by the E2F-family of transcription factors. The E2F-binding sequence is recognized by a heterodimer of E2F and a DP protein. Members of the RB-family of proteins, pRB, p107, and p130, collaborate with E2F to inhibit the expression of S-phase genes. However, during G1 progression, Cdk phosphorylate the RB proteins to disrupt the pRB/E2F complex, permitting transcription and progression to the S phase of the cell cycle.

RB Family

RB
RB2/p130
Phospho-RB (Ser780)

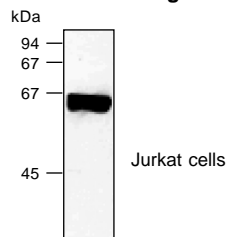
E2F/DP Family

DP-1
E2F2
 available soon
E2F3
 available soon
E2F4

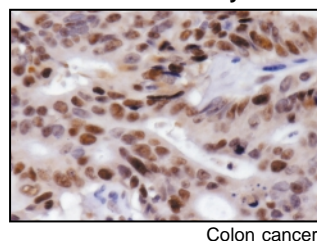
RB Gene Product

Code No.: MK-15-3 Also available;
MK-15-1S: 10 µg Trial Size
MK-15-1H: 6 mL Ready-to-use
 Clone: 3H9
 Subclass: Mouse IgG2a
 Quantity: 100 µg
 Immunogen: Recombinant human RB protein (a.a. 612-928)
 Species: Human
 Application: Western blotting , Immunoprecipitation
 Immunohistochemistry
 (Heat treatment is necessary for paraffin embedded sections)

Western blotting



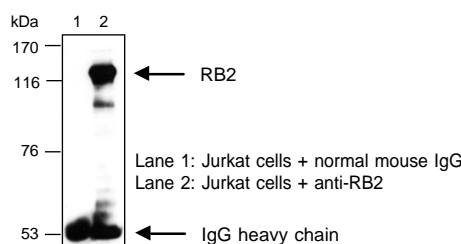
Immunohistochemistry



RB2/p130

Code No.: K0091-3 Also available;
K0091-3S: 10 µg Trial Size
 Clone: DCS-211
 Subclass: Mouse IgG1
 Quantity: 100 µg
 Immunogen: Synthetic peptide from RB2 (a.a. 935-970)
 Species: Human
 Application: Immunoprecipitation / Western blotting

Immunoprecipitation / Western blotting



* This antibody is not recommended for Western blotting using crude cell lysate.

To order or for more information, go to www.mblintl.com

Phospho-RB (Ser780) (Clone : 2C4)

Code No.: M045-3

Clone: 2C4

Subclass: Mouse IgG1

Quantity: 100 µg

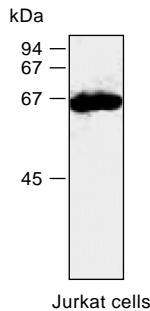
Immunogen: Synthetic phospho-RB(Ser780) peptide corresponding to a.a. 774-786 of human pRB.

Species: Human

Application: Western blotting

Also available;
M045-3S: 10 µg Trial Size

Western blotting



Phospho-RB (Ser780) (Polyclonal)

Code No.: 555

Clone: Polyclonal

Subclass: Rabbit Ig

Quantity: 100 µg

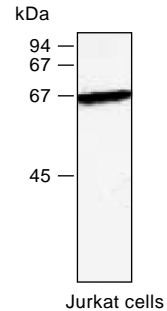
Immunogen: Synthetic phospho-RB(Ser780) peptide corresponding to a.a. 774-786 of human and 767-779 of murine RB.

Species: Human, Mouse

Application: Western blotting

Also available;
555S: 10 µg Trial Size

Western blotting



DP-1

Code No.: K0095-3

Clone: TFD10

Subclass: Mouse IgG1

Quantity: 100 µg

Immunogen: Full-length human DP-1 fusion protein

Species: Human, Mouse, Rat

Application: Western blotting

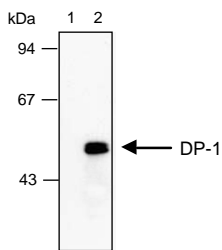
Immunoprecipitation

Immunohistochemistry

(Heat treatment is necessary for paraffin embedded sections)

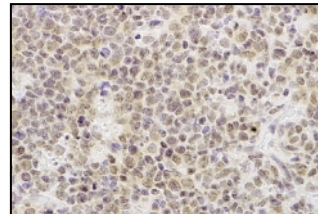
Also available;
K0095-3S: 10 µg Trial Size

Immunoprecipitation



Lane 1: Raji cells + normal mouse IgG
Lane 2: Raji cells + anti-DP-1

Immunohistochemistry



Human tonsil (germinal center)

E2F-4

Code No.: K0094-3

Clone: TFE42

Subclass: Mouse IgG1

Quantity: 100 µg

Immunogen: Recombinant E2F-4 protein

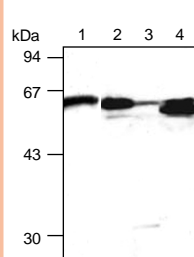
Species: Human, Mouse, Rat

Application: Western blotting

Immunoprecipitation

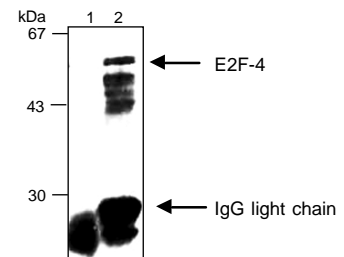
Also available;
K0094-3S: 10 µg Trial Size

Western blotting



Lane 1: Raji cells
Lane 2: NIH/3T3 cells
Lane 3: C2C12 cells
Lane 4: Rat-1 cells

Immunoprecipitation



Lane 1: HL60 cells + normal mouse IgG
Lane 2: HL60 cells + anti-E2F-4

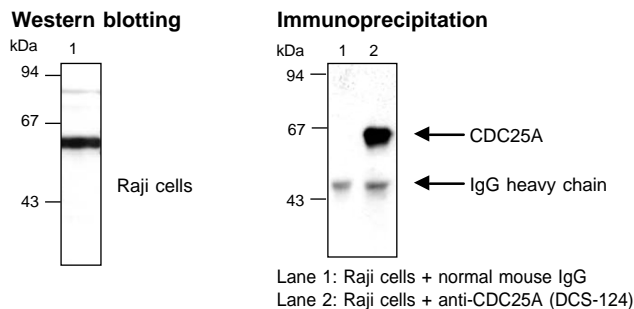
Checkpoint controls ensure orderly progression through the cell cycle. Checkpoint controls delay progression through the cell cycle in response to DNA damage, problems assembling the mitotic spindle, or inhibition of DNA replication. The DNA damage and replication checkpoints prevent transmission of altered genetic information to progeny, while metaphase checkpoint controls sense abnormalities in chromosome alignment and prevent progression to anaphase until all chromosomes achieve correct, bipolar attachment to the spindle. Errors in this process can lead to aneuploidy and are believed to contribute to tumorigenesis.

CDC25A
CDC25B available soon
CDC25C available soon
CDC20 available soon
CDC27
Cdh1
Chk1

Chk2
hRad17
p14^{ARF}
Phospho-p53 (Ser315)
Phospho-p53 (Ser392)
PIK-1 available soon
Securin

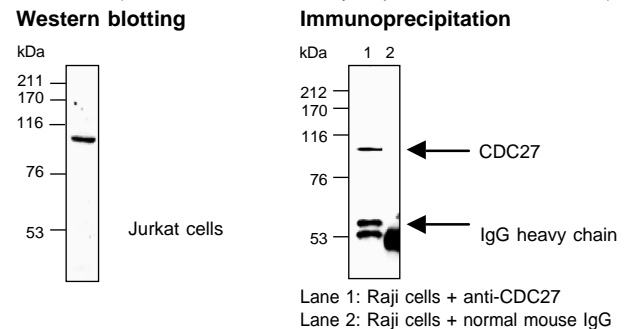
CDC25A (Clone : DCS-124)

Code No.: K0073-3 **Also available;**
Clone: DCS-124 **K0073-3S: 10 µg Trial Size**
Subclass: Mouse IgG2a **K00771-3 (Clone : DCS-120): 100 µg**
Quantity: 100 µg
Immunogen: Full-length human CDC25A protein
Species: Human, Mouse, Rat
Application: Western blotting, Immunoprecipitation



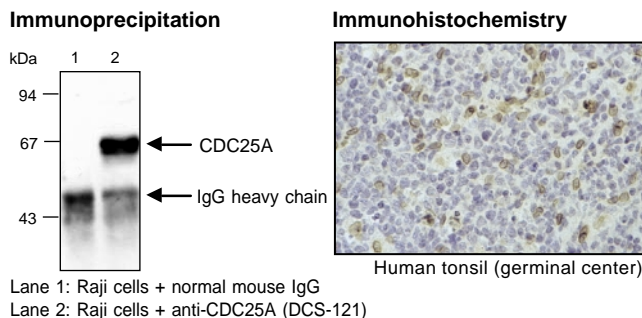
CDC27

Code No.: K0141-3
Clone: AF3-1
Subclass: Mouse IgG2a
Quantity: 100 µg
Immunogen: Human CDC27 C-terminal peptide (a.a. 814-823)
Species: Human, Mouse(-), Rat(-)
Application: Western blotting
Immunoprecipitation
Immunohistochemistry
(Heat treatment is necessary for paraffin embedded sections)



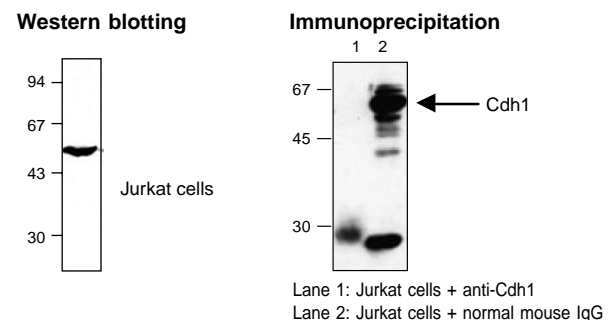
CDC25A (Clone : DCS-121)

Code No.: K0072-3 **Also available;**
Clone: DCS-121 **K0072-3S: 10 µg Trial Size**
Subclass: Mouse IgG2a
Quantity: 100 µg
Immunogen: Full-length human CDC25A protein
Species: Human, Mouse, Rat
Application: Western blotting, Immunoprecipitation
Immunohistochemistry
(Heat treatment is necessary for paraffin embedded sections)



Cdh1

Code No.: K0085-3 **Also available;**
Clone: DCS-266 **K0085-3S: 10 µg Trial Size**
Subclass: Mouse IgG1
Quantity: 100 µg
Immunogen: Recombinant human Cdh1
Species: Human, Mouse, Rat
Application: Western blotting
Immunoprecipitation

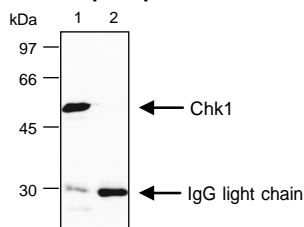


To order or for more information, go to www.mblintl.com

Chk1

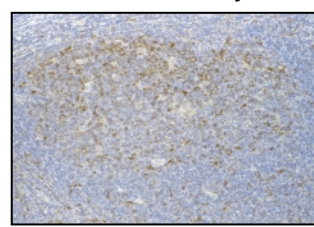
Code No.: K0086-3
 Clone: DCS-310
 Subclass: Mouse IgG3
 Quantity: 100 µg
 Immunogen: Human recombinant full length Chk1
 Species: Human, Mouse, Rat
 Application: Western blotting
 Immunoprecipitation
 Immunohistochemistry
 (Heat treatment is necessary for paraffin embedded sections)

Immunoprecipitation



Lane 1: Raji cells + anti-Chk1
 Lane 2: Raji cells + normal mouse IgG3

Immunohistochemistry



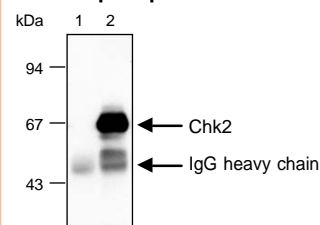
Human tonsil (germinal center)

Chk2 (Clone : DCS-273)

Code No.: K0088-3
 Clone: DCS-273
 Subclass: Mouse IgG2a
 Quantity: 100 µg
 Immunogen: Full-length human Chk2 protein
 Species: Human
 Application: Western blotting
 Immunoprecipitation
 Immunohistochemistry
 (Heat treatment is necessary for paraffin embedded sections)

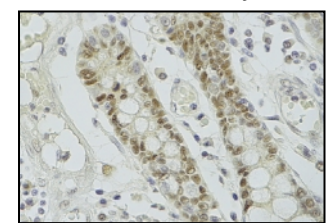
Also available;
K0088-3S: 10 µg Trial Size

Immunoprecipitation



Lane 1: HeLa cells + normal mouse IgG
 Lane 2: HeLa cells + anti-Chk2 (DCS-273)

Immunohistochemistry



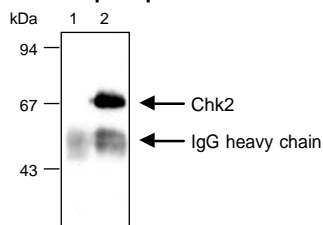
Human intestine

Chk2 (Clone : DCS-270)

Code No.: K0087-3
 Clone: DCS-270
 Subclass: Mouse IgG2a
 Quantity: 100 µg
 Immunogen: Full-length human Chk2 protein
 Species: Human
 Application: Western blotting
 Immunoprecipitation
 Immunohistochemistry
 (Heat treatment is necessary for paraffin embedded sections)

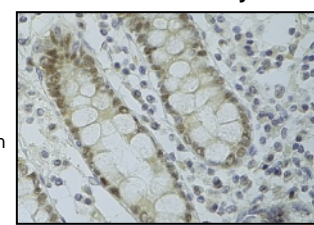
Also available;
K0087-3S: 10 µg Trial Size

Immunoprecipitation



Lane 1: HeLa cells + normal mouse IgG
 Lane 2: HeLa cells + anti-Chk2 (DCS-270)

Immunohistochemistry

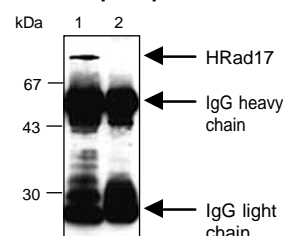


Human intestine

hRad17

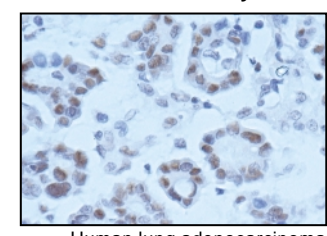
Code No.: K0120-3
 Clone: 31E9
 Subclass: Mouse IgG1
 Quantity: 100 µg
 Immunogen: Human recombinant full-length Rad17
 Species: Human, Mouse, Rat
 Application: Western blotting
 Immunoprecipitation
 Immunohistochemistry
 (Heat treatment is necessary for paraffin embedded sections)

Immunoprecipitation



Lane 1: HeLa cells + anti-hRad17
 Lane 2: HeLa cells + normal mouse IgG

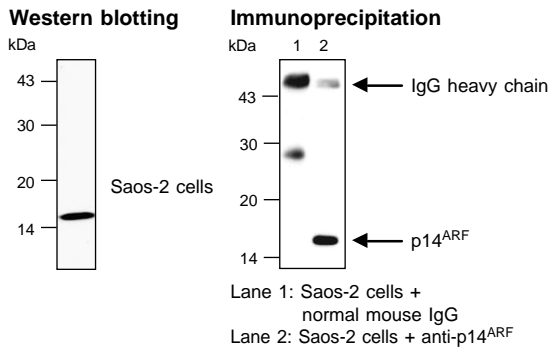
Immunohistochemistry



Human lung adenocarcinoma

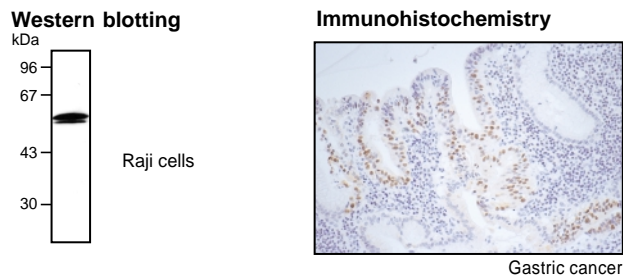
p14^{ARF}

Code No.: K0084-3 Also available;
K0084-3S: 10 µg Trial Size
 Clone: DCS-240
 Subclass: Mouse IgG1
 Quantity: 100 µg
 Immunogen: Full-length human p14^{ARF} fusion protein
 Species: Human
 Application: Western blotting
 Immunoprecipitation



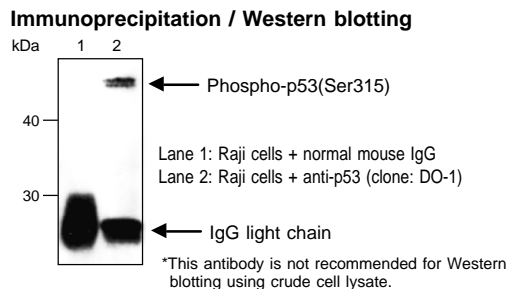
Phospho-p53 (Ser392)

Code No.: K0060-3 Also available;
K0060-3S: 10 µg Trial Size
 Clone: FPS392
 Subclass: Mouse IgG1
 Quantity: 100 µg
 Immunogen: Synthetic phosphopeptide of a.a. 380-393
 Species: Human
 Application: Western blotting
 Immunohistochemistry
 (Heat treatment is necessary for paraffin embedded sections)



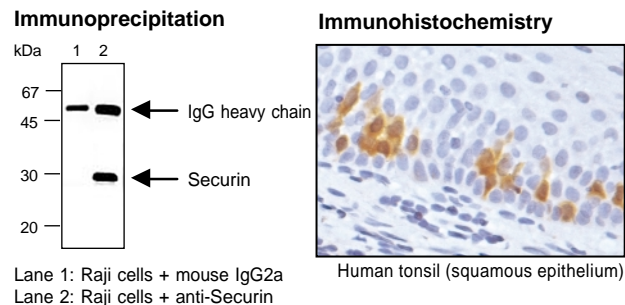
Phospho-p53 (Ser315)

Code No.: K0059-3
 Clone: FPS315
 Subclass: Mouse IgG1
 Quantity: 100 µg
 Immunogen: Synthetic phosphopeptide corresponding to a.a. 306-321
 Species: Human
 Application: Immunoprecipitation / Western blotting



Securin/Pds-1

Code No.: K0090-3
 Clone: DCS-280
 Subclass: Mouse IgG2aκ
 Quantity: 100 µg
 Immunogen: Human recombinant full length securin
 Species: Human, Mouse, Rat
 Application: Western blotting
 Immunoprecipitation
 Immunohistochemistry
 (Heat treatment is necessary for paraffin embedded sections)



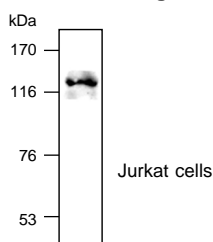
The mitotic arrest deficient (MAD) and budding uninhibited by benomyl (BUB) genes encode highly conserved proteins that are key regulatory components of the spindle checkpoint regulatory pathway. These proteins are localized to the kinetochores, where they help to detect defects in the kinetochores-microtubule interactions in the mitotic apparatus.

BUB1
BUBR1
MAD1
MAD2

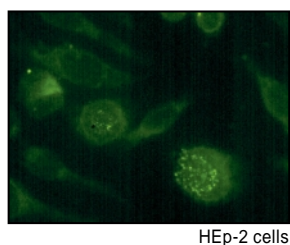
BUB1

Code No.: K0168-3
Clone: 14H5
Subclass: Mouse IgG1
Quantity: 100 µg
Immunogen: Recombinant human BUB1 protein
Species: Human, Mouse(-), Rat(-)
Application: Western blotting
Immunoprecipitation
Immunocytochemistry

Western blotting



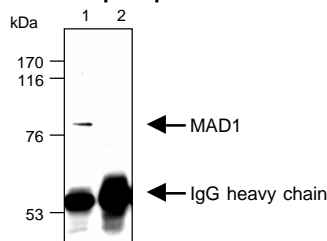
Immunocytochemistry



MAD1

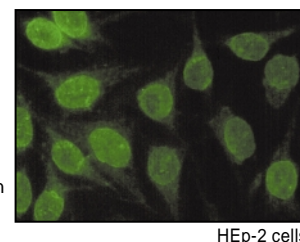
Code No.: K0166-3
Clone: 3-2
Subclass: Mouse IgG1
Quantity: 100 µg
Immunogen: Recombinant human MAD1 protein
Species: Human, Mouse(-), Rat(-)
Application: Western blotting
Immunoprecipitation
Immunocytochemistry

Immunoprecipitation



Lane 1: HeLa cells + anti-MAD1
Lane 2: HeLa cells + normal mouse IgG

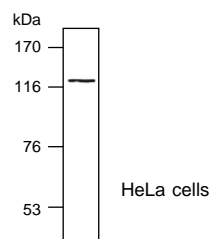
Immunocytochemistry



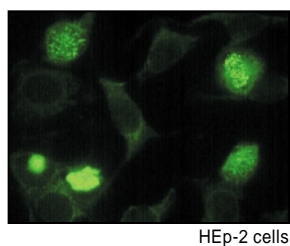
BUBR1

Code No.: K0169-3
Clone: 8G1
Subclass: Mouse IgG1
Quantity: 100 µg
Immunogen: Recombinant human BUBR1 protein
Species: Human, Mouse(-), Rat(-)
Application: Western blotting
Immunoprecipitation
Immunocytochemistry

Western blotting



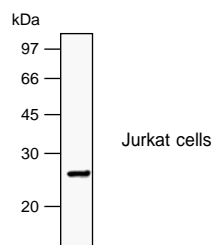
Immunocytochemistry



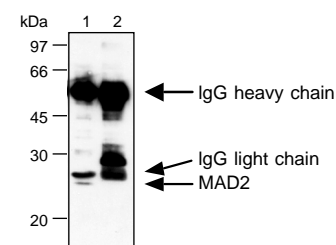
MAD2

Code No.: K0167-3
Clone: 2G9
Subclass: Mouse IgG1
Quantity: 100 µg
Immunogen: Recombinant human MAD2 protein
Species: Human, Mouse, Rat
Application: Western blotting
Immunoprecipitation

Western blotting



Immunoprecipitation



Lane 1: Jurkat cells + anti-MAD2
Lane 2: Jurkat cells + normal mouse IgG

Proper assembly of newly replicated DNA into chromatin is critical for regulating gene expression, DNA replication, and repair. Chromatin assembly is regulated by assembly factors, which mediate the assembly of newly synthesized histone proteins into nucleosomes on the replicating DNA. The nucleosomes are packed together into higher orders of structure to fit the entire length of the DNA into the nucleus. Modification of histones affects the higher order structure of chromatin and plays a role in recruitment of transcription or replication machinery. Correct chromatin structure is fundamental for chromosome stability and function.

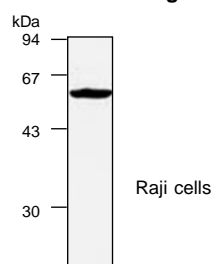
CDC6
CDC7
DNA polymerase α
DNA polymerase δ p50
available soon
DNA polymerase δ p125
DNA Topoisomerase II α
DNA Topoisomerase II $\alpha\beta$
Phospho-DNA Topoisomerase II α

MCM2
MCM3
MCM7
ORC2
PCNA

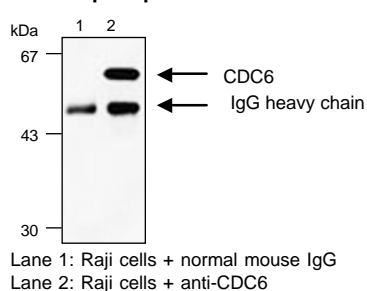
CDC6

Code No.: K0069-3 Also available;
K0069-3S: 10 μ g Trial Size
Clone: DCS-180
Subclass: Mouse IgG1
Quantity: 100 μ g
Immunogen: Recombinant human CDC6 protein (full length)
Species: Human, Mouse(-), Rat
Application: Western blotting, Immunoprecipitation

Western blotting



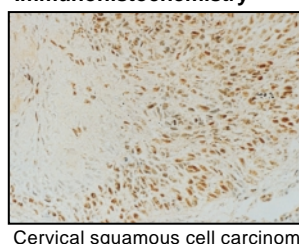
Immunoprecipitation



DNA Polymerase α

Code No.: MT-20-3
Clone: CL22-2-42B
Subclass: Mouse IgG1
Quantity: 50 μ g
Immunogen: Purified DNA polymerase α from calf thymus
Species: Human, Rat(-), Bovine
Application: Immunohistochemistry (suitable for frozen sections)

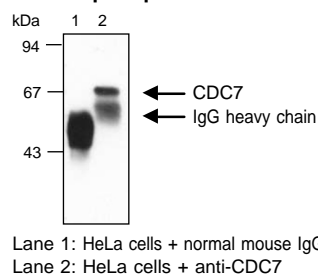
Immunohistochemistry



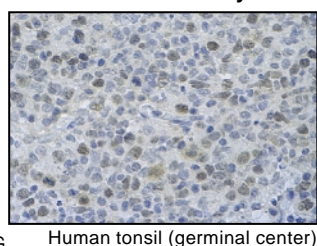
CDC7

Code No.: K0070-3 Also available;
K0070-3S: 10 μ g Trial Size
Clone: DCS-342
Subclass: Mouse IgG2b
Quantity: 100 μ g
Immunogen: Human CDC7 fusion protein (full length)
Species: Human, Mouse(-), Rat(-)
Application: Western blotting
Immunoprecipitation
Immunohistochemistry
(Heat treatment is necessary for paraffin embedded sections)

Immunoprecipitation



Immunohistochemistry

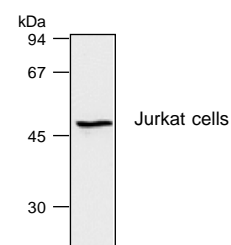


DNA Polymerase δ p50

available soon

Code No.: K0161-3
Clone: 7B4
Quantity: 100 μ g
Application: Western blotting

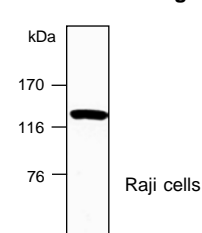
Western blotting



DNA Polymerase δ p125

Code No.: K0160-3
Clone: 5G1
Subclass: Rat IgG2a
Quantity: 100 μ g
Immunogen: Recombinant human p125
Species: Human, Mouse(-), Rat(-)
Application: Western blotting

Western blotting



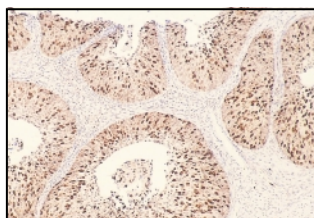
To order or for more information, go to www.mblintl.com

DNA Topoisomerase II α (Clone : 1C5)

Code No.: M042-3
 Clone: 1C5
 Subclass: Mouse IgG2a
 Quantity: 100 μ g
 Immunogen: GST-human Topoisomerase II α (C-terminal 182 a.a.)
 Species: Human, Mouse(-), Rat(-)
 Application: Western blotting
 Immunoprecipitation
 Flow Cytometry
 Immunohistochemistry
 (Heat treatment is necessary for paraffin embedded sections)

Also available;
M042-3S: 10 μ g Trial Size

Immunohistochemistry



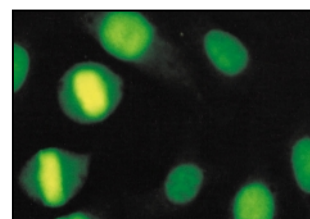
Carcinoma *in situ* of uterine cervix

Phospho DNA Topoisomerase II α (Thr1342)

Code No.: M025-3
 Clone: 3D4
 Subclass: Mouse IgG1
 Quantity: 100 μ g
 Immunogen: Synthetic phosphopeptide a.a. 1335-1350 of human Topo II α)
 Species: Human, Mouse(-), Rat(-)
 Application: Western blotting
 Immunocytochemistry

Also available;
M025-3S: 10 μ g Trial Size

Immunocytochemistry



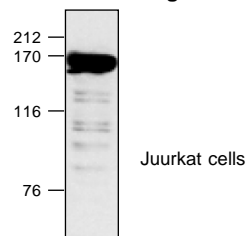
HEp-2 cells

DNA Topoisomerase II α (Clone : 8D2)

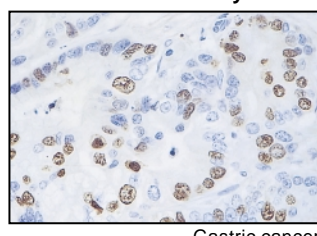
Code No.: D081-1
 Clone: 8D2
 Subclass: Mouse IgG2b
 Quantity: 100 μ L
 Immunogen: Human DNA Topoisomerase II α purified from HL-60 nuclear extract
 Species: Human, Mouse(-), Rat(-), Hamster(-)
 Application: Western blotting
 Immunoprecipitation
 Immunocytochemistry
 Immunohistochemistry
 (Heat treatment is necessary for paraffin embedded sections)

Also available;
D081-1S: 50 μ L Trial Size
D081-1H: 6 mL Ready-to-use

Western blotting



Immunohistochemistry



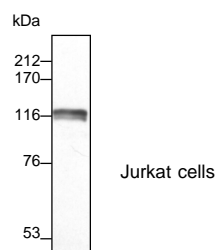
Gastric cancer

MCM2

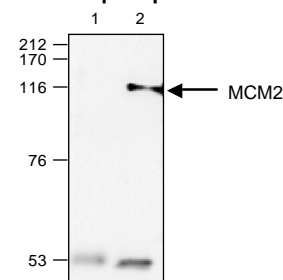
Code No.: M069-3
 Clone: 4B8
 Subclass: Mouse IgG1
 Quantity: 100 μ g
 Immunogen: GST-human Mcm2 fusion protein (full length)
 Species: Human, Mouse(-), Rat(-)
 Application: Western blotting
 Immunoprecipitation
 Immunocytochemistry

Also available;
M069-3S: 10 μ g Trial Size

Western blotting



Immunoprecipitation



Lane 1: Jurkat cells + normal mouse IgG
 Lane 2: Jurkat cells + anti-MCM2

DNA Topoisomerase II $\alpha\beta$

Code No.: M052-3
 Clone: AK5
 Subclass: Mouse IgG1
 Quantity: 100 μ g
 Immunogen: Recombinant N-terminal Topoisomerase II protein
 Species: Human, Mouse, Rat
 Application: Western blotting

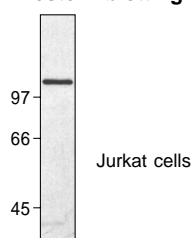
Also available;
M052-3S: 10 μ g Trial Size

MCM3

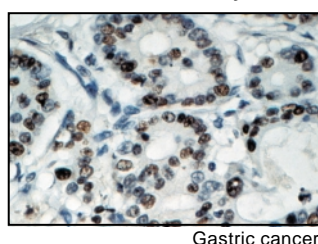
Code No.: M038-3
Clone: 3A2
Subclass: Mouse IgG2a
Quantity: 100 µg
Immunogen: GST-human Mcm3 fusion protein (full length)
Species: Human, Mouse(-)
Application: Western blotting
Immunoprecipitation
Immunocytochemistry
Immunohistochemistry
(Heat treatment is necessary for paraffin embedded sections)

Also available;
M038-3S: 10 µg Trial Size

Western blotting



Immunohistochemistry

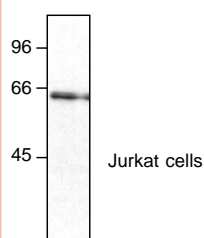


ORC2

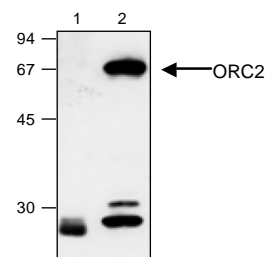
Code No.: M055-3
Clone: 3B7
Subclass: Mouse IgG1
Quantity: 100 µg
Immunogen: GST-human ORC2 fusion protein (full length)
Species: Human, Mouse(-), Rat(-), Hamster(-)
Application: Western blotting
Immunoprecipitation
Immunocytochemistry

Also available;
M055-3S: 10 µg Trial Size

Western blotting



Immunoprecipitation



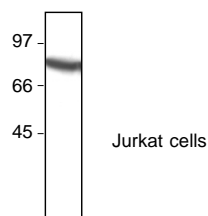
Lane 1: Jurkat cells + normal mouse IgG
Lane 2: Jurkat cells + anti-ORC2

MCM7

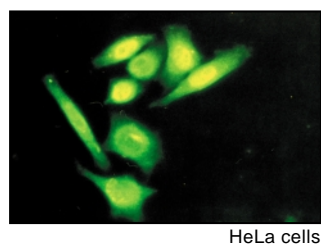
Code No.: M049-3
Clone: 4B4
Subclass: Mouse IgG2a
Quantity: 100 µg
Immunogen: GST-human Mcm 7 fusion protein (full length)
Species: Human, Mouse(-)
Application: Western blotting
Immunocytochemistry

Also available;
M049-3S: 10 µg Trial Size

Western blotting



Immunocytochemistry

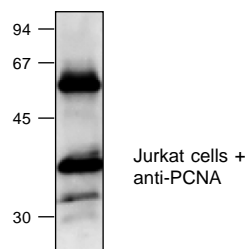


PCNA

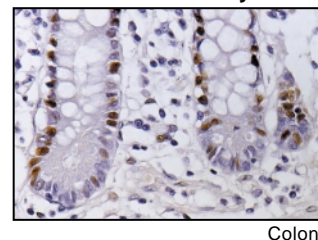
Code No.: MH-12-3
Clone: 5A10
Subclass: Mouse IgG1
Quantity: 100 µg
Immunogen: Recombinant rat PCNA
Species: Mouse, Rat
Application: Western blotting
Immunoprecipitation
Flow Cytometry
Immunohistochemistry
(Heat treatment is necessary for paraffin embedded sections)

Also available;
MH-12-3S: 10 µg Trial Size

Immunoprecipitation



Immunohistochemistry



Bromodeoxyuridine CAF-1 p60 CAF-1 p150 CENP-A CENP-E DJ-1 RCC1

Bromodeoxyuridine (BrdU)

Code No.: MI-11-3
Clone: 2B1
Subclass: Mouse IgG1
Quantity: 100 µg
Immunogen: Iododeoxyuridine-Ovalbumin
Species: Human, Mouse, Rat, Rabbit, Others
Application: Immunohistochemistry

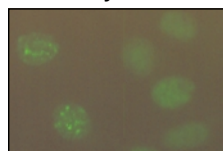
CENP-E

Code No.: K0171-3
Clone: 1H12
Subclass: Mouse IgG1
Quantity: 100 µg
Immunogen: Recombinant human CENP-E protein
Species: Human
Application: Immunocytochemistry

CAF-1 p60

Code No.: K0116-3
Clone: p60-24
Subclass: Mouse IgG1
Quantity: 100 µg
Immunogen: Purified human CAF-1 protein
Species: Human
Application: Immunoprecipitation, Immunocytochemistry

Immunocytochemistry



HEp-2 cells

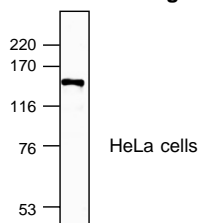
DJ-1

Code No.: M043-3
Clone: 3E8
Subclass: Mouse IgG1
Quantity: 100 µg
Immunogen: Human DJ-1 protein (full length)
Species: Human, Mouse(-)
Application: Western blotting, Immunoprecipitation

CAF-1 p150

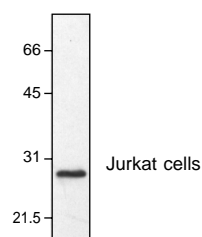
Code No.: K0115-3
Clone: p150-48
Subclass: Mouse IgG1
Quantity: 100 µg
Immunogen: Purified human CAF-1 from human 293 cell nuclei
Species: Human, Mouse(-), Rat(-)
Application: Western blotting, Immunocytochemistry
Immunohistochemistry
(Heat treatment is necessary for paraffin embedded sections)

Western blotting



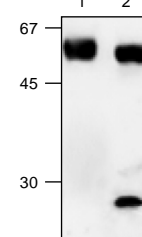
HeLa cells

Western blotting



Jurkat cells

Immunoprecipitation

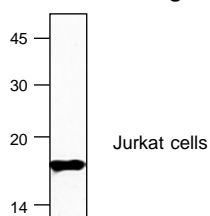


Lane 1: Jurkat cells + normal mouse IgG
Lane 2: Jurkat cells + anti-DJ-1

CENP-A

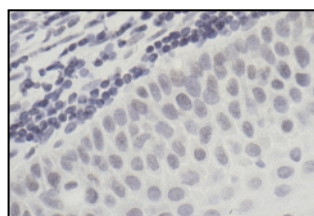
Code No.: D115-3
Clone: 3-19
Subclass: Mouse IgG1
Quantity: 100 µg
Immunogen: Human CENP-A peptide (a.a. 3-19)
Species: Human, Mouse(-), Rat(-)
Application: Western blotting, Immunocytochemistry
Immunohistochemistry
(Heat treatment is necessary for paraffin embedded sections)

Western blotting



Jurkat cells

Immunohistochemistry

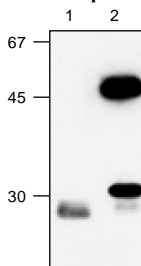


Human tonsil (squamous epithelium)

RCC1

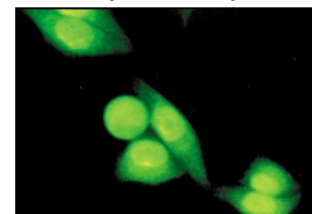
Code No.: M050-3
Clone: 3D11
Subclass: Mouse IgG1
Quantity: 100 µg
Immunogen: RCC1 protein (full length)
Species: Human, Mouse
Application: Western blotting, Immunoprecipitation
Immunocytochemistry

Immunoprecipitation



Lane 1: Jurkat cells + normal mouse IgG
Lane 2: Jurkat cells + anti-RCC1

Immunocytochemistry



HeLa cells

Trial Size Antibody List

These antibodies are available in smaller quantities (usually 10 µg) that are perfect for testing new applications or for economically performing single-use experiments.

Antibody	Code No.	Clone	Applications
CDC6	K0069-3S	DCS-180	WB,IPP
CDC7	K0070-3S	DCS-342	WB,IPP,IH
CDC25A	K0071-3S	DCS-120	WB,IPP
CDC25A	K0072-3S	DCS-121	WB,IPP,IH
CDC25A	K0073-3S	DCS-124	WB,IPP
Cdh1	K0085-3S	DCS-266	WB,IPP
Cdk1/Cdc2	MT-19-3S	5F6	WB,IPP,IH
Cdk2	MK-13-3S	8A12	WB
Cdk4	K0065-3S	DCS-156	WB
Cdk6	K0066-3S	DCS-83	WB,IPP
Cdk7	K0068-3S	DCS-MO1	WB,IPP,IH
Chk2	K0087-3S	DCS-270	WB,IPP,IH
Chk2	K0088-3S	DCS-273	WB,IPP,IH
Cyclin D1	K0062-3S	DCS-6	WB,IPP,IH
Cyclin D1	MD-17-3S	5D4	WB,IPP,IH
Cyclin D2	K0063-3S	DCS-3	WB,IPP
Cyclin D2	K0064-3S	DCS-5	WB,IPP
Cyclin D3	K0013-3S	DCS-22	WB,IPP,IH
DJ-1	M043-3S	3E8	WB,IPP
DNA Topoisomerase II α	D081-1S	8D2	WB,IPP,IC,IH
DNA Topoisomerase II α	M042-3S	1C5	WB,IPP,FCM,IH
Phospho DNA Topoisomerase II α (Thr1342)	M025-3S	3D4	WB,IC

Antibody	Code No.	Clone	Applications
DNA Topoisomerase II α,β	M052-3S	AK5	WB
DP-1	K0095-3S	TFD10	WB,IPP,IH
E2F-4	K0094-3S	TFE42	WB,IPP
MCM2	M069-3S	4B8	WB,IPP,IC
MCM3	M038-3S	3A2	WB,IPP,IC,IH
MCM7	M049-3S	4B4	WB,IC
ORC2	M055-3S	3B7	WB,IPP,IC
p14 ^{ARF}	K0084-3S	DCS-240	WB,IPP
p16 ^{INK4a}	K0077-3S	DCS-50	WB,IPP
p18 ^{INK4c}	K0079-3S	DCS-118	WB,IPP,IH
p19 ^{INK4d}	K0080-3S	DCS-100	WB,IPP,IH
p21 ^{WAF1/CIP1}	K0081-3S	DCS-60	WB,IPP,IH
p27 ^{Kip1}	K0082-3S	DCS-72	WB,IH
Phospho-p53 (Ser392)	K0060-3S	FPS392	WB,IH
PCNA	MH-12-3S	5A10	WB,IPP,FCM,IH
RB gene product	MK-15-1S	3H9	WB,IPP,IH
RB2	K0091-3S	DCS-211	IPP-WB
Phospho-RB (Ser780)	M045-3S	2C4	WB
Phospho RB (Ser780)	555S	Polyclonal	WB
RCC1	M050-3S	3D11	WB,IPP,IC

WB: Western blotting, IPP: Immunoprecipitation, IC: Immunocytochemistry, IH: Immunohistochemistry, FCM: Flow Cytometry
 IPP-WB: Immunoprecipitation-Western blotting

*Visit our website for special offers and
 the latest new products!*

Products and Solutions to Advance Scientific Discoveries™

To order or for more information, go to www.mblintl.com

MBL Group

MBL[®]

International Corporation

MBL International Corporation

15 B Constitution Way TEL : (781) 939-6964

Woburn, MA 01801, USA (800) 200-5459

FAX : (781) 939-6963

URL: <http://www.mblintl.com> e-mail: info@mblintl.com

MBL[®]

MEDICAL & BIOLOGICAL LABORATORIES CO., LTD.

5-10 Marunouchi 3 chome, Naka-ku,

Nagoya 460-0002, JAPAN

TEL : 81-52-971-2081 FAX : 81-52-971-2337

URL: <http://www.mbl.co.jp>