



# GPCR

## G Protein-Coupled Receptor



Products and Solutions to Advanced Scientific Discoveries™

For Research use only

MBL offers the industry's largest inventory of rabbit polyclonal anti-human peptide antibodies to G Protein-Coupled Receptors(GPCRs). All GPCR antibodies are optimized for histochemistry in human tissues using formalin-fixed, paraffin embedded sections.

Antibodies are provided as 50 µg of peptide affinity-purified polyclonal rabbit sera. The expression pattern of each antibody has been screened across a panel of up to 50 tissues and compared to other proprietary or commercially available antibodies by board-certified pathologists. Antibodies are selected that show the strongest concordance to existing literature and known patterns of expression in other species, and for their affinity and specificity to their targets.

Abbreviation for Epitope

Location	Abbreviation	Location	Abbreviation
1st cytoplasmic domain	1st-CD	3rd transmembrane domain	3rd-TMD
1st extracellular domain	1st-ECD	4th transmembrane domain	4th-TMD
1st transmembrane domain	1st-TMD	5th transmembrane domain	5th-TMD
2nd cytoplasmic domain	2nd-CD	6th transmembrane domain	6th-TMD
2nd extracellular domain	2nd-ECD	7th transmembrane domain	7th-TMD
2nd transmembrane domain	2nd-TMD	C-terminal domain	C-Term-D
3rd cytoplasmic domain	3rd-CD	Modulating domain	Mod-D
3rd extracellular domain	3rd-ECD	N-terminal extracellular domain	N-Term-ExD

Code No. Epitope Application Species Reactivity

### 5-HT1B Receptor

Subfamily: Serotonin

LS-A598	3rd-CD	IH	Hu, Mo, Rat
---------	--------	----	-------------

### 5-HT1D Receptor

Subfamily: Serotonin

LS-A577	3rd-CD	IH	Hu
---------	--------	----	----

LS-A588	N-Term-ExD	IH	Hu
---------	------------	----	----

LS-A589	3rd-CD	IH	Hu
---------	--------	----	----

LS-A590	2nd-ECD	IH	Hu
---------	---------	----	----

Code No. Epitope Application Species Reactivity

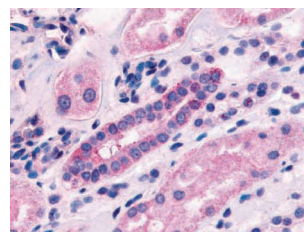
### 5-HT1F Receptor

Subfamily: Serotonin

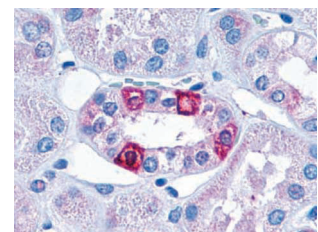
LS-A3338	N-Term-ExD	IH	Hu, Rat
----------	------------	----	---------

LS-A3343	C-Term-D	IH	Hu, Mo, Rat
----------	----------	----	-------------

LS-A3344	3rd-CD	IH	Hu
----------	--------	----	----



(LS-A3338) Kidney, Renal tubules



(LS-A3344) Kidney, Renal tubules

Species Reactivity Hu: Human, Mo: Mouse, Mky: Monkey

Application WB: Western blotting, IPP: Immunoprecipitation, FCM: Flow Cytometry, IC: Immunocytochemistry, IH: Immunohistochemistry, IF: Immunofluorescence

©MBL International, 2006. Photos are property of MBL International.

For more information and to order, go to [www.mblintl.com](http://www.mblintl.com)

**MBL** International Corporation

Code No.	Epitope	Application	Species Reactivity
----------	---------	-------------	--------------------

## 5-HT2B Receptor

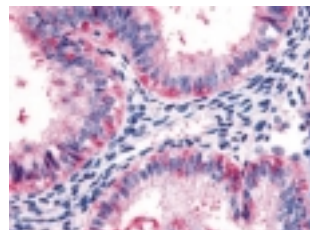
Subfamily: Serotonin

LS-A1111	2nd-ECD	IH	Hu
LS-A1187	N-Term-ExD	IH	Hu

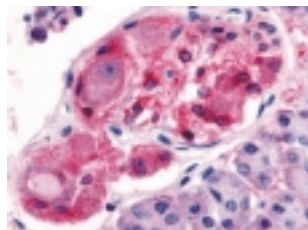
## 5-HT2C Receptor

Subfamily: Serotonin

LS-A1115	3rd-CD	IH	Hu
LS-A1116	3rd-CD	IH	Hu
LS-A1119	C-Term-D	IH	Hu



(LS-A1115) Uterus, Glandular cells



(LS-A1116) Pancreas, Ganglion and Schwann cells

## 5-HT4 Receptor

Subfamily: Serotonin

LS-A655	3rd-CD	IH	Hu
LS-A656	C-Term-D	IH	Hu, Rat
LS-A657	C-Term-D	IH	Hu
LS-A2685	3rd-CD	IH	Hu

## 5-HT5A Receptor

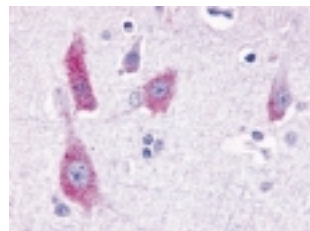
Subfamily: Serotonin

LS-A2121	3rd-CD	IH	Hu
LS-A2122	3rd-CD	IH	Hu

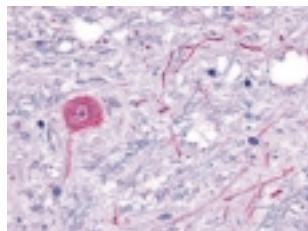
## 5-HT6 Receptor

Subfamily: Serotonin

LS-A650	C-Term-D	IH	Hu
LS-A652	C-Term-D	IH	Hu, Rat



(LS-A650) Brain, Neurons and glia



(LS-A652) Brain, Neuron

## 5-HT7 Receptor

Subfamily: Serotonin

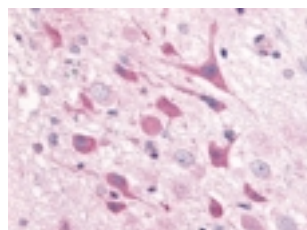
LS-A663	C-Term-D	IH	Hu
LS-A6674	C-Term-D	IF	Hu
LS-A6675	C-Term-D	IH	Hu

Code No.	Epitope	Application	Species Reactivity
----------	---------	-------------	--------------------

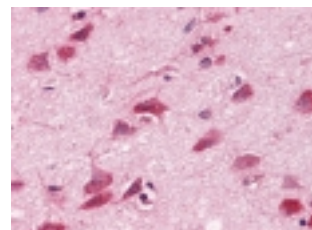
## Adenosine A1 Receptor

Subfamily: Adenosine

LS-A9	2nd-ECD	IH	Hu, Mo, Rat
LS-A10	3rd-CD	IH	Hu, Mo, Rat
LS-A11	C-Term-D	IH	Hu



(LS-A9) Rat Brain, Neurons



(LS-A10) Brain, Neurons and glia

## Adenosine A2a Receptor

Subfamily: Adenosine

LS-A1239	C-Term-D	IH, IC	Hu
----------	----------	--------	----

## Adenosine A3 Receptor

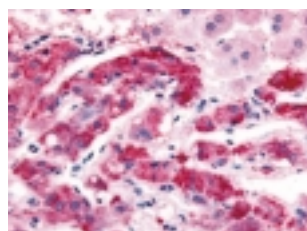
Subfamily: Adenosine

LS-A686	2nd-ECD	IH	Hu
LS-A689	3rd-CD	IH	Hu

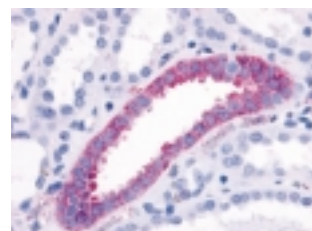
## Alpha 1b-Adrenoceptor (ADRA1B)

Subfamily: Adrenergic

LS-A697	C-Term-D	IH	Hu, Mo, Rat
LS-A698	C-Term-D	IH	Hu



(LS-A697) Adrenal, Medulla



(LS-A698) Adrenal, Collecting duct

## Alpha 1c-Adrenoceptor (ADRA1A)

Subfamily: Adrenergic

LS-A1248	3rd-CD	IH, IC	Hu, Mo, Rat
----------	--------	--------	-------------

## Alpha 1d-Adrenoceptor (ADRA1D)

Subfamily: Adrenergic

LS-A12	3rd-CD	IH	Hu
--------	--------	----	----

## Alpha 2c-Adrenoceptor

Subfamily: Adrenergic

LS-A3986	N-Term-ExD	IH	Hu
LS-A3988	3rd-CD	IH	Hu
LS-A3990	2nd-ECD	IH	Hu
LS-A4876	3rd-CD	IH	Hu

Species Reactivity Hu: Human, Mo: Mouse, Mky: Monkey

Application WB: Western blotting, IPP: Immunoprecipitation, FCM: Flow Cytometry, IC: Immunocytochemistry, IH: Immunohistochemistry, IF: Immunofluorescence

Code No.	Epitope	Application	Species Reactivity
----------	---------	-------------	--------------------

## Anaphylatoxin C3a Receptor

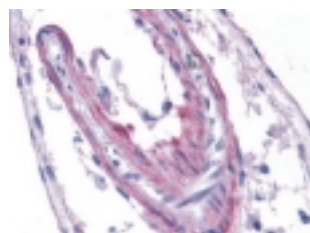
Subfamily: Anaphylatoxin

LS-A27	C-Term-D	IH	Hu
LS-A28	2nd-ECD	IH	Hu

## Apelin Receptor (APJ/AGTRL1)

Subfamily: Apelin

LS-A62	2nd-ECD	IH	Hu
LS-A63	1st-CD	IH	Hu
LS-A64	3rd-CD	IH	Hu, Mo, Rat
LS-A65	C-Term-D	IH	Hu



(LS-A62)



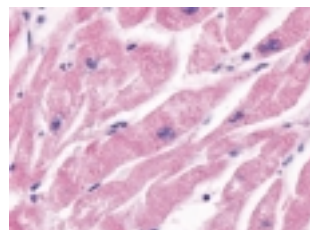
(LS-A64)

Brain, Vessel

## Beta-2 Adrenoceptor

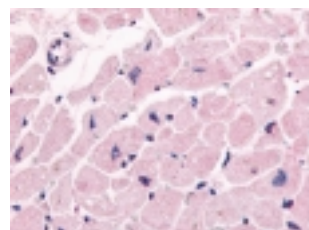
Subfamily: Adrenergic

LS-A2656	C-Term-D	IH, IC, WB	Hu
LS-A2662	N-Term-ExD	IH	Hu
LS-A2663	5th-TMD	IH	Hu



(LS-A2656)

Heart, Cardiac myocytes



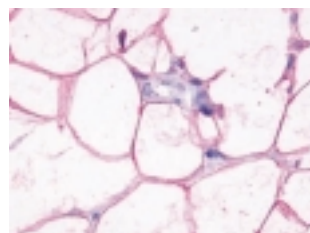
(LS-A2662)

Heart, Cardiac myocytes

## Beta-3 Adrenoceptor

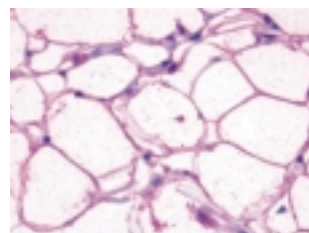
Subfamily: Adrenergic

LS-A4195	C-Term-D	IH	Hu
LS-A4196	2nd-ECD	IH	Hu
LS-A4198	N-Term-ExD	IH	Hu



(LS-A4195)

Adipose



(LS-A4198)

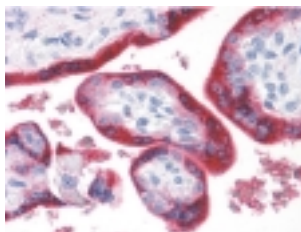
Adipose

Code No.	Epitope	Application	Species Reactivity
----------	---------	-------------	--------------------

## Bombesin Receptor Subtype 3 (BRS3)

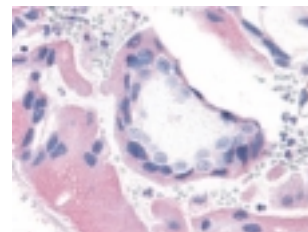
Subfamily: Orphan-A

LS-A4915	N-Term-ExD	IH	Hu
LS-A5055	C-Term-D	IH	Hu



(LS-A4915)

Placenta, Villi



(LS-A5055)

Placenta, Villi

## Bradykinin B1 Receptor

Subfamily: Bradykinin

LS-A799	3rd-CD	IH	Hu
LS-A3580	3rd-ECD	IH	Hu

## Bradykinin B2 Receptor

Subfamily: Bradykinin

LS-A797	C-Term-D	IH, IC	Hu, Rat
---------	----------	--------	---------

## Brain-Specific Angiogenesis Inhibitor 1 (BAI1)

Subfamily: Orphan-B

LS-A989	C-Term-D	IH	Hu
LS-A990	C-Term-D	IH	Hu
LS-A991	C-Term-D	IH	Hu

## Brain-Specific Angiogenesis Inhibitor 2 (BAI2)

Subfamily: Orphan-B

LS-A981	N-Term-ExD	IH, WB	Hu
LS-A982	N-Term-ExD	IH	Hu
LS-A984	C-Term-D	IH	Hu

## Brain-Specific Angiogenesis Inhibitor 3 (BAI3)

Subfamily: Orphan-B

LS-A978	3rd-CD	IH	Hu
LS-A979	C-Term-D	IH	Hu

## C-C Chemokine Receptor 1 (CCR1)

Subfamily: Chemokine

LS-A1242	2nd-ECD	IH	Hu
----------	---------	----	----

## C-C Chemokine Receptor 2 (CCR2)

Subfamily: Chemokine

LS-A1898	2nd-ECD	IH	Hu
LS-A1899	N-Term-ExD	IH	Hu

Species Reactivity Hu: Human, Mo: Mouse, Mky: Monkey

Application WB: Western blotting, IPP: Immunoprecipitation, FCM: Flow Cytometry, IC: Immunocytochemistry, IH: Immunohistochemistry, IF: Immunofluorescence

Code No.	Epitope	Application	Species	Reactivity
----------	---------	-------------	---------	------------

### C-C Chemokine Receptor 3 (CCR3)

Subfamily: Chemokine

LS-A1386	2nd-ECD	IH	Hu
LS-A1389	C-Term-D	IH	Hu

### C-C Chemokine Receptor 4 (CCR4)

Subfamily: Chemokine

LS-A351	C-Term-D	IH	Hu
---------	----------	----	----

### C-C Chemokine Receptor 6 (CCR6)

Subfamily: Chemokine

LS-A355	2nd-CD	IH	Hu
LS-A356	2nd-ECD	IH	Hu

### C-C Chemokine Receptor 7 (CCR7)

Subfamily: Chemokine

LS-A748	N-Term-ExD	IH	Hu
LS-A847	C-Term-D	IH	Hu
LS-A848	C-Term-D	IH, IC	Hu
LS-A4254	1st-ECD	IH	Hu

### C-C Chemokine Receptor 8 (CCR8)

Subfamily: Chemokine

LS-A359	N-Term-ExD	IH	Hu
LS-A3845	N-Term-ExD	IH	Hu
LS-A3847	C-Term-D	IH	Hu

### C-C Chemokine Receptor 9 (CCR9)

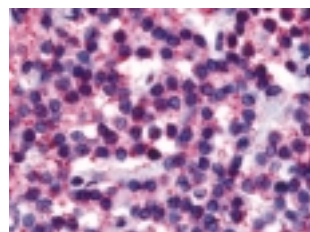
Subfamily: Chemokine

LS-A958	2nd-CD	IH	Hu
LS-A959	2nd-ECD	IH	Hu
LS-A961	C-Term-D	IH	Hu, Mo, Rat

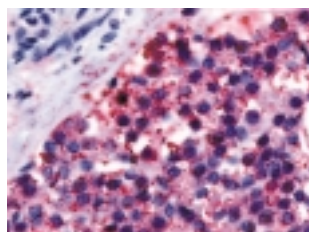
### Calcitonin Receptor

Subfamily: Calcitonin

LS-A766	N-Term-ExD	IH	Hu
LS-A769	2nd-TMD	IH	Hu
LS-A771	C-Term-D	IH	Hu



(LS-A766)



(LS-A771)

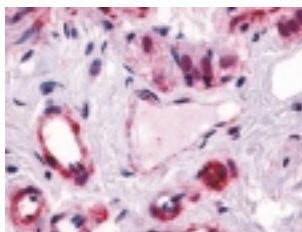
Parathyroid

Code No.	Epitope	Application	Species	Reactivity
----------	---------	-------------	---------	------------

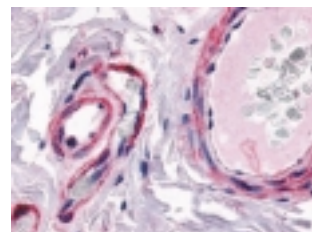
### Calcitonin Receptor-Like Receptor

Subfamily: Adrenomedullin

LS-A6731	3rd-CD	IH	Hu
LS-A6755	N-Term-ExD	IH	Hu



(LS-A6731) Colon, Submucosal plexus and submucosal vessels

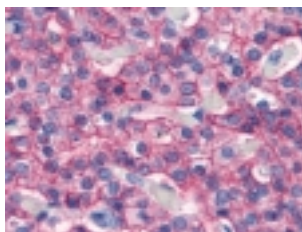


(LS-A6755) Colon, Submucosal vessels

### Calcium-Sensing Receptor CASR

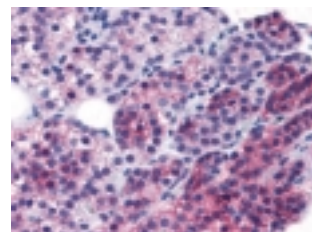
Subfamily: Calcium-sensing

LS-A1425	N-Term-ExD	IH	Hu, Mo, Rat
LS-A1426	N-Term-ExD	IH	Hu
LS-A1427	N-Term-ExD	IH	Hu



(LS-A1425)

Parathyroid



(LS-A1427)

Parathyroid

### Cannabinoid Receptor 1 (CB1)

Subfamily: Cannabinoid

LS-A31	3rd-CD	IH, IC	Hu, Mo, Rat
LS-A32	C-Term-D	IH, IC	Hu, Mo, Rat

### Cannabinoid Receptor 2 (CB2)

Subfamily: Cannabinoid

LS-A33	N-Term-ExD	IH	Hu
LS-A34	3rd-CD	IH	Hu
LS-A35	C-Term-D	IH	Hu
LS-A36		IH	Hu

### CELSR1

Subfamily: Orphan-U

LS-A1909	N-Term-ExD	IH	Hu
LS-A5364	C-Term-D	IH	Hu
LS-A5367	N-Term-ExD	IH	Hu
LS-A5575	N-Term-ExD	IH	Hu
LS-A5624	1st-ECD	IH	Hu

Species Reactivity Hu: Human, Mo: Mouse, Mky: Monkey

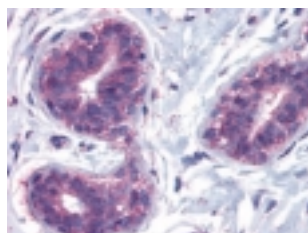
Application WB: Western blotting, IPP: Immunoprecipitation, FCM: Flow Cytometry, IC: Immunocytochemistry, IH: Immunohistochemistry, IF: Immunofluorescence

Code No.	Epitope	Application	Species Reactivity
----------	---------	-------------	--------------------

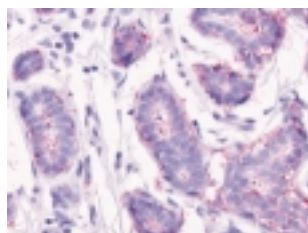
## CELSR2

Subfamily: Orphan-U

LS-A1939	N-Term-ExD	IH	Hu
LS-A1940	N-Term-ExD	IH	Hu
LS-A1942	N-Term-ExD	IH	Hu
LS-A1943	C-Term-D	IH	Hu, Mo, Rat



(LS-A1940) Breast, Lobular epithelium

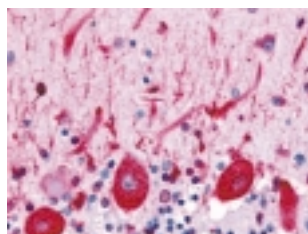


(LS-A1942) Breast, Lobular epithelium

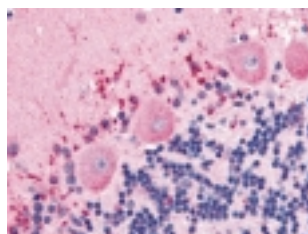
## CELSR3

Subfamily: Orphan-U

LS-A1947	N-Term-ExD	IH	Hu
LS-A2734	N-Term-ExD	IH	Hu
LS-A2735	N-Term-ExD	IH	Hu
LS-A2736	N-Term-ExD	IH	Hu, Mo, Rat
LS-A2744	C-Term-D	IH	Hu



(LS-A1947) Brain, Purkinje neurons



(LS-A2734) Brain, Purkinje neurons

## Chemokine (C motif) XC Receptor 1 (CCXCR1)

Subfamily: Chemokine

LS-A156	2nd-ECD	IH	Hu
---------	---------	----	----

## Chemokine (C-C motif) Receptor-Like 1 (CCRL1)

Subfamily: Chemokine

LS-A1441	1st-CD	IH	Hu
LS-A1442	2nd-CD	IH	Hu

## Chemokine (C-C motif) Receptor-Like 2 (CCRL2)

Subfamily: Chemokine

LS-A1093	2nd-CD	IH	Hu
LS-A1094	3rd-CD	IH	Hu

## Chemokine Binding Protein 2 (CCBP2/D6)

Subfamily: Chemokine

LS-A363	N-Term-ExD	IH	Hu
LS-A365		IH	Hu

Code No.	Epitope	Application	Species Reactivity
----------	---------	-------------	--------------------

## Chemokine-Like Receptor 1 (CMKLR1)

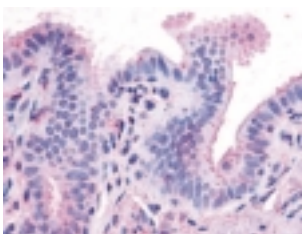
Subfamily: Chemoattractant

LS-A447	N-Term-ExD	IH, IC	Hu
LS-A448	N-Term-ExD	IH	Hu

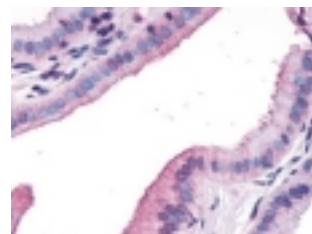
## Cholecystokinin A Receptor

Subfamily: Cholecystokinin

LS-A3291	C-Term-D	IH	Hu
LS-A3293	N-Term-ExD	IH	Hu



(LS-A3291) Gall bladder, Epithelium



(LS-A3293) Gall bladder, Epithelium

## Cholecystokinin B Receptor

Subfamily: Cholecystokinin

LS-A1282	3rd-CD	IH	Hu
LS-A6535	3rd-ECD	IH	Hu

## Complement Component 5a Receptor 1

Subfamily: Anaphylatoxin

LS-A3867	N-Term-ExD	IH, IC	Hu
----------	------------	--------	----

## Corticotropin-Releasing Factor Receptor 1 (CRHR1)

Subfamily: Corticotropin releasing factor

LS-A1778	N-Term-ExD	IH	Hu, Mo, Rat
LS-A1779	N-Term-ExD	IH	Hu, Mo, Rat
LS-A6687	N-Term-ExD	IH	Hu, Rat

## Corticotropin-Releasing Factor Receptor 2 (CRHR2)

Subfamily: Corticotropin releasing factor

LS-A502	1st-ECD	IH	Hu
LS-A505	N-Term-ExD	IH	Hu
LS-A3570	N-Term-ExD	IH, WB	Hu, Mo, Rat
LS-A3573	1st-ECD	IH	Hu
LS-A4364	N-Term-ExD	IH	Hu

## CXC Chemokine Receptor 3 (CXCR3)

Subfamily: Chemokine

LS-A1374	C-Term-D	IH	Hu
----------	----------	----	----

## CXC Chemokine Receptor 4 (CXCR4)

Subfamily: Chemokine

LS-A1376	N-Term-ExD	IH	Hu
LS-A1380	3rd-CD	IH	Hu, Mo, Rat

Species Reactivity Hu: Human, Mo: Mouse, Mky: Monkey

Application WB: Western blotting, IPP: Immunoprecipitation, FCM: Flow Cytometry, IC: Immunocytochemistry, IH: Immunohistochemistry, IF: Immunofluorescence

Code No.	Epitope	Application	Species Reactivity
----------	---------	-------------	--------------------

## CXC Chemokine Receptor 5 (CXCR5)

Subfamily: Chemokine

LS-A1384	3rd-CD	IH	Hu
LS-A1385	C-Term-D	IH	Hu

## CXC Chemokine Receptor 6 (CXCR6)

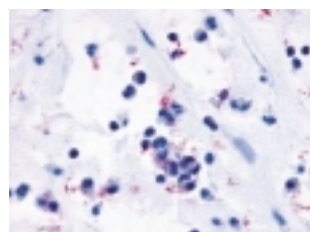
Subfamily: Chemokine

LS-A1102	2nd-CD	IH	Hu
LS-A1104	C-Term-D	IH	Hu
LS-A1105	C-Term-D	IH	Hu

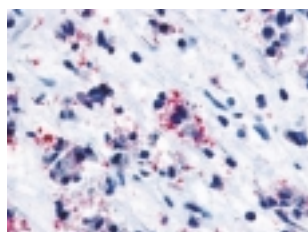
## Cysteinyl Leukotriene Receptor 1 (CysLT1)

Subfamily: Chemoattractant

LS-A1317	3rd-ECD	IH	Hu
LS-A1320	C-Term-D	IH	Hu



(LS-A1317) Nasal mucosa, Allergic rhinitis, Eosinophils



(LS-A1320) Nasal mucosa, Allergic rhinitis, Eosinophils

## Cysteinyl Leukotriene Receptor 2 (CysLT2)

Subfamily: Chemoattractant

LS-A3305	2nd-ECD	IH	Hu
----------	---------	----	----

## Dopamine Receptor D1

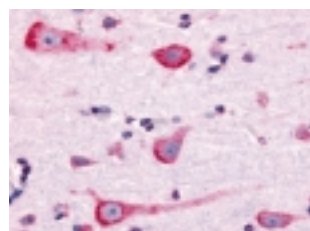
Subfamily: Dopamine

LS-A43	3rd-CD	IH	Hu
LS-A44	C-Term-D	IH	Hu

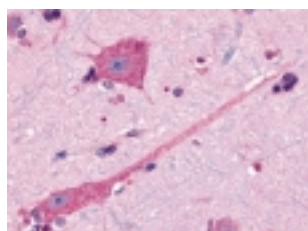
## Dopamine Receptor D2

Subfamily: Dopamine

LS-A1403	3rd-CD	IH	Hu
LS-A1405	3rd-CD	IH	Hu



(LS-A1403) Brain, Neurons and glia



(LS-A1405) Brain, Neurons and glia

## Dopamine Receptor D3

Subfamily: Dopamine

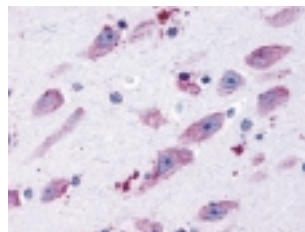
LS-A1402	3rd-CD	IH	Hu
----------	--------	----	----

Code No.	Epitope	Application	Species Reactivity
----------	---------	-------------	--------------------

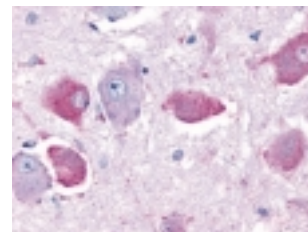
## Dopamine Receptor D4

Subfamily: Dopamine

LS-A3921	C-Term-D	IH	Hu
LS-A3923	3rd-CD	IH	Hu



(LS-A3921) Brain, Neurons and glia



(LS-A3923) Brain, Neurons and glia

## Dopamine Receptor D5

Subfamily: Dopamine

LS-A1407	3rd-ECD	IH	Hu, Rat
----------	---------	----	---------

## EBV-Induced Gene 2

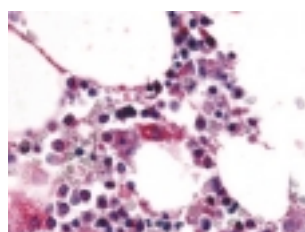
Subfamily: Orphan-A

LS-A45	2nd-ECD	IH	Hu
LS-A46	3rd-CD	IH	Hu, Mo

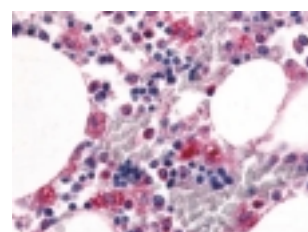
## EGF-Like Module-Containing Mucin-Like Receptor 1 (EMR1)

Subfamily: Orphan-B

LS-A1180	N-Term-ExD	IH	Hu
LS-A2675	N-Term-ExD	IH	Hu
LS-A2678	C-Term-D	IH	Hu



(LS-A1180) Bone marrow



(LS-A2675) Bone marrow

## EGF-Like Module-Containing Mucin-Like Receptor 2 (EMR2)

Subfamily: Orphan-B

LS-A1663	N-Term-ExD	IC	Hu
LS-A6319	N-Term-ExD	IH	Hu
LS-A6381	N-Term-ExD	IH	Hu

Species Reactivity Hu: Human, Mo: Mouse, Mky: Monkey

Application WB: Western blotting, IPP: Immunoprecipitation, FCM: Flow Cytometry, IC: Immunocytochemistry, IH: Immunohistochemistry, IF: Immunofluorescence

Code No.	Epitope	Application	Species Reactivity
----------	---------	-------------	--------------------

## EGF-Like Module-Containing Mucin-Like Receptor 3 (EMR3)

Subfamily: Orphan-B

LS-A1669	N-Term-ExD	IH	Hu
LS-A6609	N-Term-ExD	IH	Hu

## Enkephalopsin

Subfamily: Opsin

LS-A2133	C-Term-D	IH	Hu
LS-A2134	C-Term-D	IH	Hu

## Endothelin A Receptor

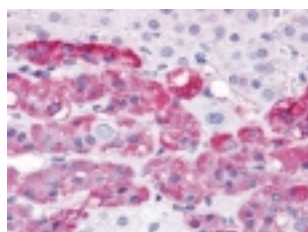
Subfamily: Endothelin

LS-A4067	N-Term-ExD	IH	Hu
LS-A4069	3rd-ECD	IH	Hu
LS-A4072	C-Term-D	IH	Hu
LS-A4073	2nd-ECD	IH	Hu, Mo

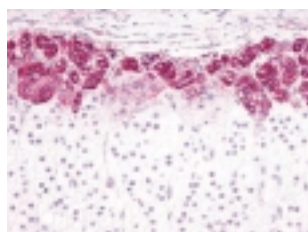
## Endothelin B Receptor

Subfamily: Endothelin

LS-A54	N-Term-ExD	IH, IC, WB	Hu
LS-A55	N-Term-ExD	IH, WB	Hu
LS-A56	N-Term-ExD	IH	Hu
LS-A57	C-Term-D	IH	Hu, Mo, Rat



(LS-A54) Adrenal, Medulla

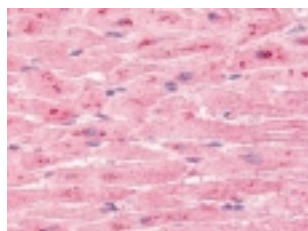


(LS-A56) Adrenal

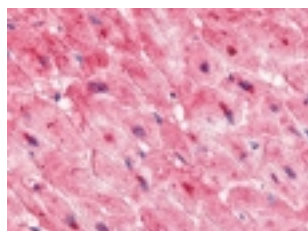
## ETL Protein

Subfamily: Orphan-B

LS-A2113	C-Term-D	IH	Hu, Rat
LS-A2116	N-Term-ExD	IH	Hu



(LS-A2113) Heart



(LS-A2116) Heart

## Follicle-Stimulating Hormone Receptor (FSHR)

Subfamily: Glycoprotein hormone

LS-A2231	N-Term-ExD	IH	Hu
LS-A4004	N-Term-ExD	IH	Hu

Species Reactivity Hu: Human, Mo: Mouse, Mky: Monkey

Application WB: Western blotting, IPP: Immunoprecipitation, FCM: Flow Cytometry, IC: Immunocytochemistry, IH: Immunohistochemistry, IF: Immunofluorescence

Code No.	Epitope	Application	Species Reactivity
----------	---------	-------------	--------------------

## Formyl Peptide Receptor 1 (FPR1)

Subfamily: Chemoattractant

LS-A2085	3rd-ECD	IH	Hu
LS-A2086	2nd-ECD	IH	Hu
LS-A2087	3rd-ECD	IH	Hu

## Formyl Peptide Receptor-Like 1 (FPRL1)

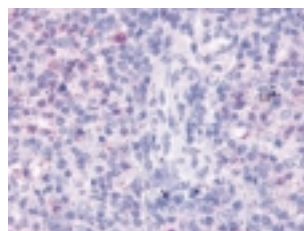
Subfamily: Chemoattractant

LS-A1878	2nd-ECD	IH	Hu
LS-A1879	C-Term-D	IH	Hu
LS-A1880	N-Term-ExD	IH	Hu

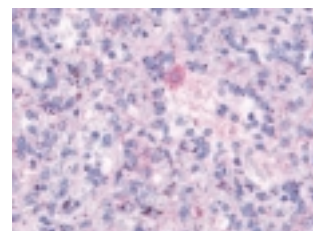
## Formyl Peptide Receptor-Like 2 (FPRL2)

Subfamily: Chemoattractant

LS-A3733	2nd-TMD	IH	Hu
LS-A3735	N-Term-ExD	IH, IC	Hu
LS-A4136	N-Term-ExD	IH	Hu



(LS-A3733) Spleen

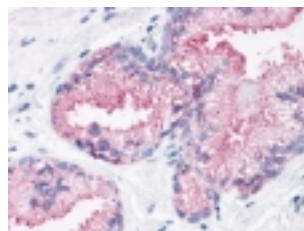


(LS-A3735) Spleen

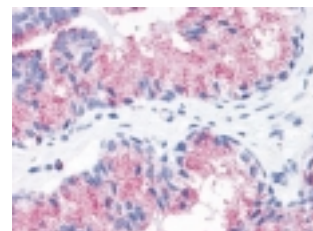
## Frizzled-1 (FZD1)

Subfamily: Frizzled

LS-A3484	N-Term-ExD	IH	Hu
LS-A4150	N-Term-ExD	IH	Hu



(LS-A3484) Prostate

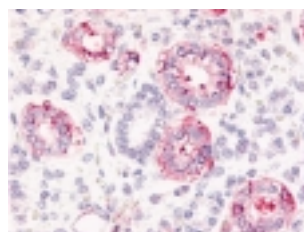


(LS-A4150) Prostate

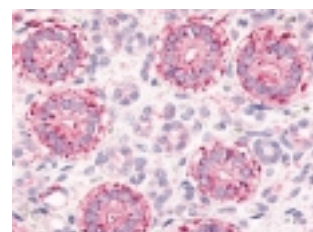
## Frizzled-2 (FZD2)

Subfamily: Frizzled

LS-A3488	3rd-ECD	IH	Hu, Mo
LS-A3491	N-Term-ExD	IH	Hu



(LS-A3488) Fetal Kidney



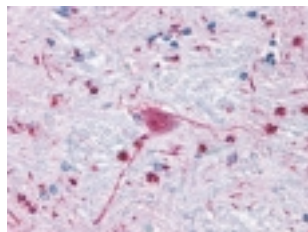
(LS-A3491) Fetal Kidney

Code No.	Epitope	Application	Species Reactivity
----------	---------	-------------	--------------------

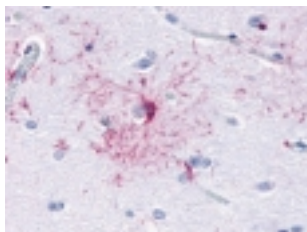
### Frizzled-3 (FZD3)

Subfamily: Frizzled

LS-A4437	N-Term-ExD	IH	Hu, Mo, Rat
LS-A4454	C-Term-D	IH	Hu, Mo, Rat



(LS-A4437) Brain, Neurons and glia



(LS-A4454) Brain, Neurons and glia

### Frizzled-4 (FZD4)

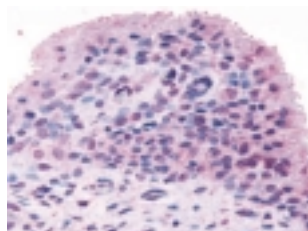
Subfamily: Frizzled

LS-A4577	N-Term-ExD	IH	Hu
LS-A4911	C-Term-D	IH	Hu, Mo, Rat

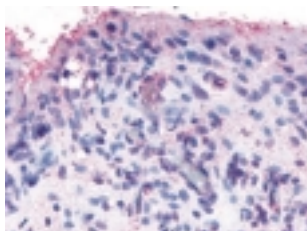
### Frizzled-5 (FZD5)

Subfamily: Frizzled

LS-A4273	N-Term-ExD	IH	Hu, Mo, Rat
LS-A4284	3rd-CD	IH	Hu



(LS-A4273) Synovium, Rheumatoid arthritis



(LS-A4284) Synovium, Rheumatoid arthritis

### Frizzled-6 (FZD6)

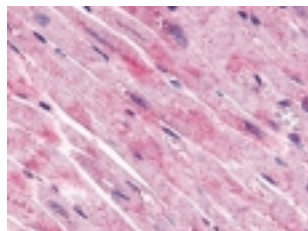
Subfamily: Frizzled

LS-A4481	N-Term-ExD	IH	Hu
LS-A4482	N-Term-ExD	IH, IC	Hu

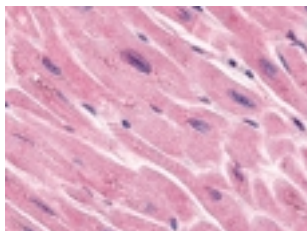
### Frizzled-7 (FZD7)

Subfamily: Frizzled

LS-A4899	N-Term-ExD	IH	Hu
LS-A4900	N-Term-ExD	IH	Hu



(LS-A4899) Heart, Cardiac myocytes



(LS-A4900) Heart, Cardiac myocytes

Code No.	Epitope	Application	Species Reactivity
----------	---------	-------------	--------------------

### Frizzled-8 (FZD8)

Subfamily: Frizzled

LS-A4766	N-Term-ExD	IH	Hu, Mo
LS-A4767	3rd-ECD	IH	Hu, Mo
LS-A4776	N-Term-ExD	IH	Hu, Mo

### Frizzled-9 (FZD9)

Subfamily: Frizzled

LS-A5097	N-Term-ExD	IH	Hu
LS-A5103	N-Term-ExD	IH, IC	Hu, Mo
LS-A5118	N-Term-ExD	IH, IC	Hu, Mo

### Frizzled-10 (FZD10)

Subfamily: Frizzled

LS-A4400	N-Term-ExD	IH	Hu
----------	------------	----	----

### G Protein-Coupled Receptor AGR9

Subfamily: Orphan-U

LS-A401	C-Term-D	IH	Hu
LS-A402	C-Term-D	IH	Hu

### G Protein-Coupled Receptor BG37/TGR5

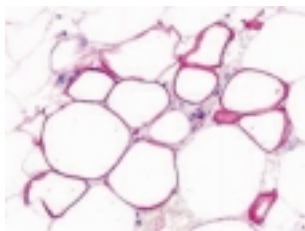
Subfamily: Bile acids

LS-A1933	1st-CD	IH	Hu
LS-A1935	3rd-CD	IH	Hu
LS-A1936	C-Term-D	IH	Hu
LS-A1937	C-Term-D	IH	Hu

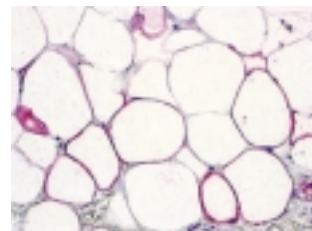
### G Protein-Coupled Receptor C5L2/GPR77

Subfamily: Anaphylatoxin

LS-A430	C-Term-D	IH	Hu
LS-A431	2nd-ECD	IH	Hu



(LS-A430) Adrenal, Adipocytes



(LS-A431) Adrenal, Adipocytes

### G Protein-Coupled Receptor D-GPCR

Subfamily: Orphan-U

LS-A1851	2nd-CD	IH	Hu
LS-A1854	C-Term-D	IH	Hu

### G Protein-Coupled Receptor EX33/GPR84

Subfamily: Orphan-A

LS-A343	2nd-ECD	IH	Hu
LS-A344	5th-TMD	IH	Hu

Species Reactivity Hu: Human, Mo: Mouse, Mky: Monkey

Application WB: Western blotting, IPP: Immunoprecipitation, FCM: Flow Cytometry, IC: Immunocytochemistry, IH: Immunohistochemistry, IF: Immunofluorescence

Code No.	Epitope	Application	Species Reactivity
----------	---------	-------------	--------------------

## G Protein-Coupled Receptor G2A

Subfamily: Lysophospholipid/Lysosphingolipid

LS-A1600	2nd-CD	IH	Hu
LS-A3702	3rd-ECD	IH	Hu

## G Protein-Coupled Receptor GPR1

Subfamily: Orphan-A

LS-A74	N-Term-ExD	IH	Hu
LS-A76	C-Term-D	IH	Hu
LS-A77	C-Term-D	IH	Hu

## G Protein-Coupled Receptor GPR2/CCR10

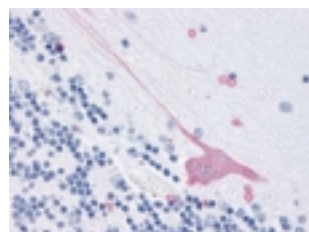
Subfamily: Chemokine

LS-A1152	2nd-ECD	IH	Hu
LS-A1155	C-Term-D	IH	Hu

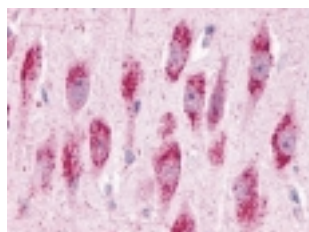
## G Protein-Coupled Receptor GPR3

Subfamily: Lysophospholipid/Lysosphingolipid

LS-A120	1st-ECD	IH	Hu, Mo
LS-A121	2nd-ECD	IH	Hu, Mo, Rat



(LS-A120)

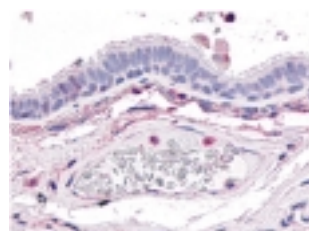


(LS-A121) Brain, Neurons and glia

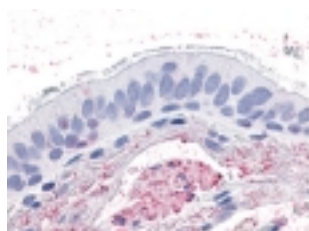
## G Protein-Coupled Receptor GPR4

Subfamily: Lysophospholipid/Lysosphingolipid

LS-A143	2nd-ECD	IH	Hu
LS-A144	3rd-CD	IH, IC	Hu
LS-A145	C-Term-D	IH, IC	Hu
LS-A146	C-Term-D	WB, IC	Hu



(LS-A143) Lung, Respiratory epithelium



(LS-A144) Lung, Respiratory epithelium

## G Protein-Coupled Receptor GPR6

Subfamily: Lysophospholipid/Lysosphingolipid

LS-A168	3rd-CD	IH	Hu, Mo, Rat
LS-A169	C-Term-D	IH	Hu

Code No.	Epitope	Application	Species Reactivity
----------	---------	-------------	--------------------

## G Protein-Coupled Receptor GPR7

Subfamily: Neuropeptide

LS-A171	2nd-CD	IH	Hu
LS-A172	2nd-ECD	IH	Hu, Rat

## G Protein-Coupled Receptor GPR8

Subfamily: Neuropeptide

LS-A175	N-Term-ExD	IH	Hu
LS-A6636	2nd-CD	IH	Hu

## G Protein-Coupled Receptor GPR12

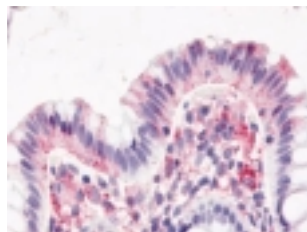
Subfamily: Lysophospholipid/Lysosphingolipid

LS-A78	C-Term-D	IH, WB	Hu, Mo
LS-A307	2nd-ECD	IH	Hu, Mo, Rat

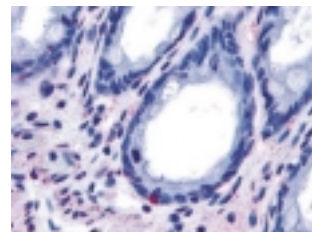
## G Protein-Coupled Receptor GPR15

Subfamily: Orphan-A

LS-A1613	1st-CD	IH	Hu
LS-A6285	C-Term-D	IH	Hu



(LS-A1613) Colon, Surface epithelium



(LS-A6285) Colon

## G Protein-Coupled Receptor GPR17

Subfamily: Orphan-A

LS-A88	1st-CD	IH	Hu
LS-A92	3rd-ECD	IH	Hu
LS-A4228	N-Term-ExD	IH	Hu
LS-A4229	N-Term-ExD	IH, IC	Hu

## G Protein-Coupled Receptor GPR18

Subfamily: Orphan-A

LS-A3953	1st-ECD	IH	Hu
LS-A3958	2nd-CD	IH	Hu

## G Protein-Coupled Receptor GPR19

Subfamily: Orphan-A

LS-A97	2nd-CD	IH	Hu
LS-A98	3rd-CD	IH	Hu

## G Protein-Coupled Receptor GPR20

Subfamily: Orphan-A

LS-A101	C-Term-D	IH	Hu
LS-A104	C-Term-D	IH	Hu

Species Reactivity Hu: Human, Mo: Mouse, Mky: Monkey

Application WB: Western blotting, IPP: Immunoprecipitation, FCM: Flow Cytometry, IC: Immunocytochemistry, IH: Immunohistochemistry, IF: Immunofluorescence

Code No.	Epitope	Application	Species	Reactivity
----------	---------	-------------	---------	------------

## G Protein-Coupled Receptor GPR21

Subfamily: Orphan-A

LS-A105	3rd-CD	IH		Hu
LS-A106	3rd-TMD	IH		Hu

## G Protein-Coupled Receptor GPR22

Subfamily: Orphan-A

LS-A109	N-Term-ExD	IH		Hu
LS-A111	3rd-CD	IH		Hu

## G Protein-Coupled Receptor GPR25

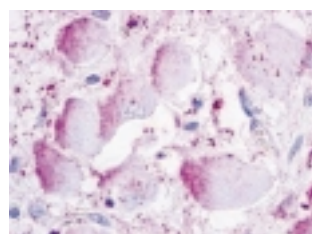
Subfamily: Orphan-A

LS-A378	C-Term-D	IH		Hu
LS-A483	N-Term-ExD	IH		Hu

## G Protein-Coupled Receptor GPR26

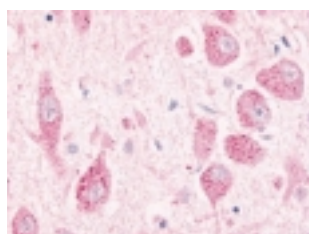
Subfamily: Orphan-A

LS-A555	2nd-ECD	IH		Hu
LS-A4112	3rd-CD	IH		Hu



(LS-A555)

Brain



(LS-A4112)

Brain

## G Protein-Coupled Receptor GPR27/SREB1

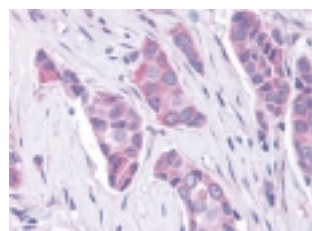
Subfamily: Orphan-A

LS-A496	N-Term-ExD	IH, IC		Hu
LS-A3709	C-Term-D	IH, IC		Hu

## G Protein-Coupled Receptor GPR30

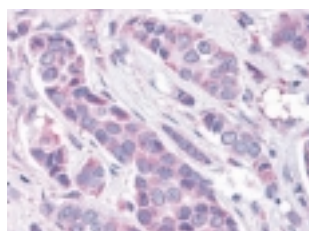
Subfamily: Transmembrane estrogen receptor

LS-A1183	N-Term-ExD	IH, IF		Hu
LS-A1184	1st-ECD	IH, WB, IF, FCM		Hu
LS-A4268	2nd-ECD	IF		Hu
LS-A4271	3rd-ECD	IH, IC		Hu
LS-A4272	C-Term-D	IH, WB, IF		Hu, Mo
LS-A4290	N-Term-ExD	IH, WB, IF		Hu



(LS-A4272)

Breast carcinoma



(LS-A4290)

Breast carcinoma

Code No.	Epitope	Application	Species	Reactivity
----------	---------	-------------	---------	------------

## G Protein-Coupled Receptor GPR31

Subfamily: Orphan-A

LS-A1158	2nd-ECD	IH		Hu
LS-A1160	C-Term-D	IH		Hu

## G Protein-Coupled Receptor GPR32

Subfamily: Orphan-A

LS-A1678	2nd-ECD	IH		Hu
LS-A1680	3rd-ECD	IH		Hu
LS-A4889	2nd-ECD	IH		Hu

## G Protein-Coupled Receptor GPR34

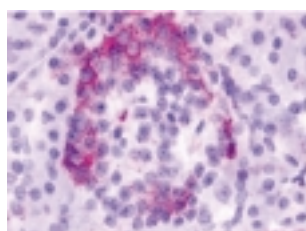
Subfamily: Orphan-A

LS-A1255	2nd-CD	IH		Hu
LS-A1259	C-Term-D	IH		Hu

## G Protein-Coupled Receptor GPR35

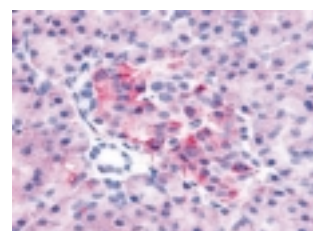
Subfamily: Orphan-A

LS-A2	3rd-CD	IH, IC		Hu
LS-A3	C-Term-D	IH, IC		Hu
LS-A125	3rd-ECD	IH		Hu
LS-A3975	N-Term-ExD	IC		Hu



(LS-A2)

Pancreas



(LS-A3)

Pancreas

## G-Protein Coupled Receptor 37 Like 1 (GPR37L1)

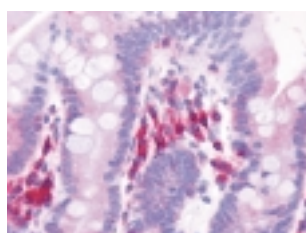
Subfamily: Orphan-A

LS-A405	3rd-CD	IH		Hu
LS-A406	C-Term-D	IH		Hu

## G Protein-Coupled Receptor GPR39

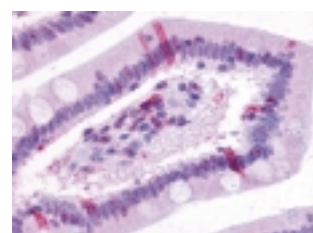
Subfamily: Orphan-A

LS-A139	3rd-ECD	IH		Hu
LS-A142	C-Term-D	IH		Hu



(LS-A139)

Small intestine



(LS-A142)

Small intestine

Species Reactivity Hu: Human, Mo: Mouse, Mky: Monkey

Application WB: Western blotting, IPP: Immunoprecipitation, FCM: Flow Cytometry, IC: Immunocytochemistry, IH: Immunohistochemistry, IF: Immunofluorescence

Code No.	Epitope	Application	Species	Reactivity
----------	---------	-------------	---------	------------

## G Protein-Coupled Receptor GPR40

Subfamily: Carboxylic acid

LS-A1595	C-Term-D	IH, WB	Hu
LS-A1599	3rd-ECD	IH, WB	Hu

## G Protein-Coupled Receptor GPR43

Subfamily: Carboxylic acid

LS-A1578	2nd-CD	IH	Hu, Mo, Rat
LS-A6599	3rd-ECD	IH	Hu

## G Protein-Coupled Receptor GPR44 (CRTH2)

Subfamily: Prostanoid

LS-A3337	N-Term-ExD	IH	Hu
LS-A3528	N-Term-ExD	IH, IC	Hu
LS-A3529	2nd-ECD	IH	Hu
LS-A3530	3rd-ECD	IH, IC	Hu

## G Protein-Coupled Receptor GPR45

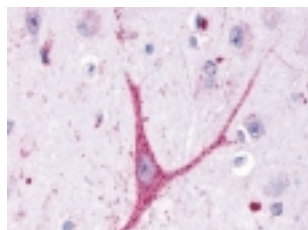
Subfamily: Orphan-A

LS-A1227	N-Term-ExD	IH	Hu
LS-A1228	2nd-ECD	IH	Hu
LS-A1272	C-Term-D	IH, IC	Hu
LS-A1273	3rd-CD	IH, IC	Hu

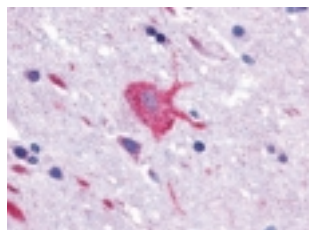
## G Protein-Coupled Receptor GPR48

Subfamily: Orphan-A

LS-A1631	N-Term-ExD	IH	Hu
LS-A1633	2nd-CD	IH	Hu
LS-A3560	C-Term-D	IH	Hu
LS-A3561	N-Term-ExD	IH	Hu
LS-A3593	C-Term-D	IH	Hu



(LS-A1631) Brain, Neurons and glia



(LS-A3593) Brain, Neurons and glia

## G Protein-Coupled Receptor GPR49

Subfamily: Orphan-A

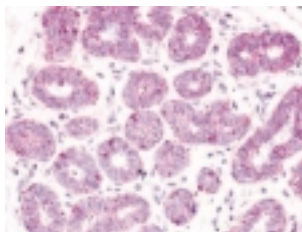
LS-A1235	2nd-CD	IH	Hu
LS-A1236	C-Term-D	IH	Hu

Code No.	Epitope	Application	Species	Reactivity
----------	---------	-------------	---------	------------

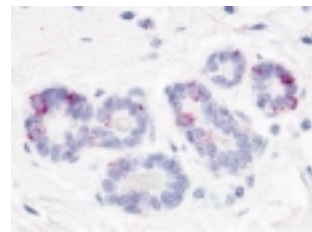
## G Protein-Coupled Receptor GPR52

Subfamily: Orphan-A

LS-A446	N-Term-ExD	IH	Hu
LS-A3493	3rd-CD	IH	Hu



(LS-A446) Breast, Ducts and lobule



(LS-A3493) Breast, Lobules

## G Protein-Coupled Receptor GPR54

Subfamily: Metastin

LS-A1926	2nd-ECD	IH	Hu
LS-A1927	3rd-CD	IH	Hu
LS-A1928	C-Term-D	IH	Hu
LS-A1929	N-Term-ExD	IH, WB	Hu

## G Protein-Coupled Receptor GPR55

Subfamily: Orphan-A

LS-A6817	3rd-CD	IH	Hu
LS-A164	C-Term-D	IH	Hu

## G Protein-Coupled Receptor GPR61

Subfamily: Orphan-A

LS-A1685	N-Term-ExD	IH	Hu
LS-A1689	C-Term-D	IH	Hu

## G Protein-Coupled Receptor GPR62

Subfamily: Orphan-A

LS-A468	C-Term-D	IH	Hu
LS-A510	3rd-CD	IH	Hu

## G Protein-Coupled Receptor GPR63/PSP24 Beta

Subfamily: Lysophospholipid/Lysosphingolipid

LS-A1724	C-Term-D	IH	Hu
LS-A6352	1st-CD	IH	Hu, Mo
LS-A6354	1st-ECD	IH	Hu, Mo
LS-A6357	3rd-ECD	IH	Hu, Mo
LS-A6379	C-Term-D	IH	Hu

## G Protein-Coupled Receptor GPR64/HE6

Subfamily: Orphan-B

LS-A1262	C-Term-D	IH	Hu, Mo, Rat
LS-A1264	C-Term-D	IH	Hu

Species Reactivity Hu: Human, Mo: Mouse, Mky: Monkey

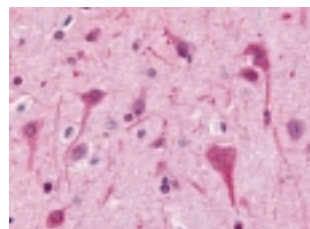
Application WB: Western blotting, IPP: Immunoprecipitation, FCM: Flow Cytometry, IC: Immunocytochemistry, IH: Immunohistochemistry, IF: Immunofluorescence

Code No.	Epitope	Application	Species Reactivity
----------	---------	-------------	--------------------

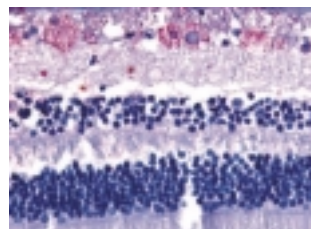
## G Protein-Coupled Receptor GPR75

Subfamily: Orphan-A

LS-A1589	C-Term-D	IH	Hu
LS-A1590	2nd-ECD	IH	Hu
LS-A1593	C-Term-D	IH	Hu, Rat
LS-A1594	C-Term-D	IH	Hu, Rat
LS-A3250	N-Term-ExD	IH	Hu
LS-A3252	C-Term-D	IH	Hu
LS-A3259	2nd-CD	IH	Hu



(LS-A1589) Brain, Neurons and glia

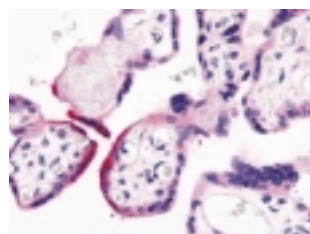


(LS-A1594) Eye, Retina

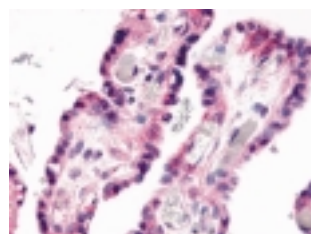
## G Protein-Coupled Receptor GPR78

Subfamily: Orphan-U

LS-A443	3rd-CD	IH	Hu
LS-A3278	C-Term-D	IH	Hu



(LS-A443) Placenta, Villi

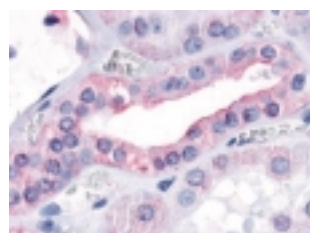


(LS-A3278) Placenta, Villi

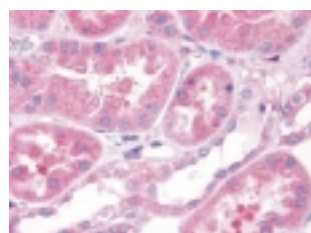
## G Protein-Coupled Receptor GPR80/GPR99/P2Y15

Subfamily: Purinergic

LS-A1867	3rd-ECD	IH	Hu
LS-A6747	N-Term-ExD	IH	Hu



(LS-A1867) Kidney



(LS-A6747) Kidney

## G Protein-Coupled Receptor GPR81/FKSG80

Subfamily: Chemokine

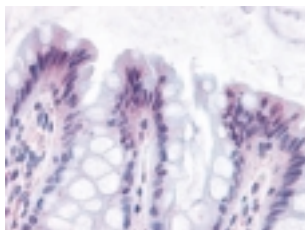
LS-A2091	2nd-ECD	IH	Hu, Rat
LS-A2095	C-Term-D	IH	Hu

Code No.	Epitope	Application	Species Reactivity
----------	---------	-------------	--------------------

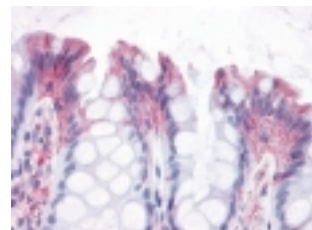
## G Protein-Coupled Receptor GPR82

Subfamily: Orphan-A

LS-A2706	2nd-CD	IH	Hu
LS-A2707	2nd-CD	IH	Hu



(LS-A2706) Colon



(LS-A2707) Colon

## G Protein-Coupled Receptor GPR83

Subfamily: Orphan-A

LS-A1606	C-Term-D	IH	Hu
LS-A1607	3rd-CD	IH	Hu
LS-A4954	3rd-ECD	IH	Hu
LS-A4957	1st-ECD	IH	Hu

## G Protein-Coupled Receptor GPR85/SREB2

Subfamily: Orphan-A

LS-A339	2nd-ECD	IH	Hu, Mo, Rat
LS-A341	3rd-CD	IH	Hu, Mo, Rat
LS-A342	C-Term-D	IH, IC	Hu, Mo, Rat

## G Protein-Coupled Receptor GPR86/GPR94/P2Y13

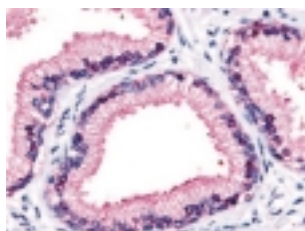
Subfamily: Purinergic

LS-A1619	2nd-CD	IH	Hu
LS-A1620	2nd-ECD	IH	Hu
LS-A1622	3rd-CD	IH	Hu
LS-A4853	N-Term-ExD	IH	Hu
LS-A4901	3rd-TMD	IH	Hu
LS-A4905	3rd-ECD	IH	Hu

## G Protein-Coupled Receptor GPR87/GPR95

Subfamily: Orphan-A

LS-A1580	N-Term-ExD	IH	Hu
LS-A1584	C-Term-D	IH	Hu
LS-A1585	C-Term-D	IH	Hu, Mo



(LS-A1584) Prostate, Epithelium



(LS-A1585) Prostate, Epithelium

Species Reactivity Hu: Human, Mo: Mouse, Mky: Monkey

Application WB: Western blotting, IPP: Immunoprecipitation, FCM: Flow Cytometry, IC: Immunocytochemistry, IH: Immunohistochemistry, IF: Immunofluorescence

Code No.	Epitope	Application	Species Reactivity
----------	---------	-------------	--------------------

## G Protein-Coupled Receptor GPR88

Subfamily: Orphan-A

LS-A1572	C-Term-D	IH	Hu, Mo, Rat
LS-A6324	2nd-CD	IH	Hu

## G Protein-Coupled Receptor GPR89/SH120

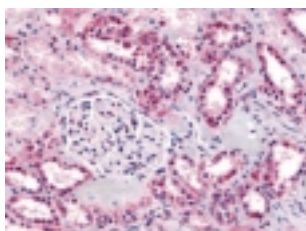
Subfamily: Orphan-A

LS-A1732	3rd-CD	IH	Hu, Rat
LS-A1733	3rd-CD	IH	Hu, Mo, Rat
LS-A1734	3rd-ECD	IH	Hu, Mo

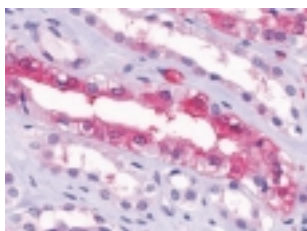
## G Protein-Coupled Receptor GPR91

Subfamily: Purinergic

LS-A2112	C-Term-D	IH	Hu
LS-A3315	2nd-CD	IH	Hu
LS-A3476	N-Term-ExD	IH	Hu



(LS-A2112)



(LS-A3315)

Kidney, Medulla

## G Protein-Coupled Receptor GPR92/GPR93

Subfamily: Orphan-A

LS-A426	3rd-CD	IH	Hu, Mo
LS-A428	C-Term-D	IH, IC	Hu

## G Protein-Coupled Receptor GPR97

Subfamily: Orphan-B

LS-A3721	N-Term-ExD	IH	Hu
LS-A3724	2nd-ECD	IH	Hu
LS-A3725	N-Term-ExD	IH	Hu

## G Protein-Coupled Receptor GPR100

Subfamily: Bradykinin

LS-A552	C-Term-D	IH	Hu
LS-A553	C-Term-D	IH, WB	Hu

## G Protein-Coupled Receptor GPR101

Subfamily: Orphan-U

LS-A8066	3rd-CD	IH	Hu
----------	--------	----	----

## G Protein-Coupled Receptor GPR103

Subfamily: Orphan-U

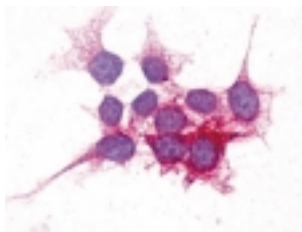
LS-A1922	2nd-ECD	IH	Hu
LS-A1924	C-Term-D	IH	Hu
LS-A1925		IH	Hu

Code No.	Epitope	Application	Species Reactivity
----------	---------	-------------	--------------------

## G Protein-Coupled Receptor GPR105/P2Y14

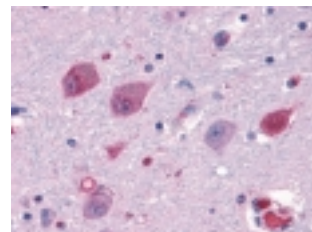
Subfamily: Sugar sensing

LS-A1486	C-Term-D	IH, WB, IC	Hu
LS-A6577	2nd-ECD	IH	Hu



(LS-A1486)

Transfected cells expressing GPR105



(LS-A6577)

Brain, Neurons and glia

## G Protein-Coupled Receptor GPR109B/HM74

Subfamily: Nicotinic acid

LS-A179	N-Term-ExD	IH, IC	Hu
LS-A180	3rd-CD	IH, IC	Hu
LS-A183	C-Term-D	IH	Hu

## G Protein-Coupled Receptor GPR110

Subfamily: Orphan-B

LS-A2019	N-Term-ExD	IH	Hu
LS-A2021	N-Term-ExD	IH	Hu

## G Protein-Coupled Receptor GPR115

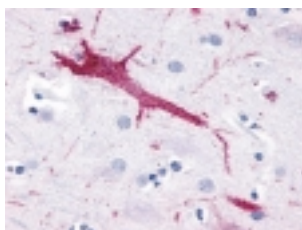
Subfamily: Orphan-B

LS-A2723	C-Term-D	IH	Hu, Mo
----------	----------	----	--------

## G Protein-Coupled Receptor GPR116

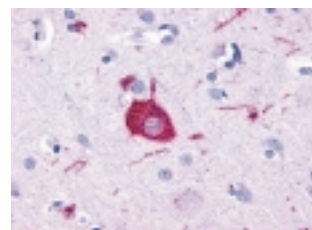
Subfamily: Orphan-B

LS-A1513	N-Term-ExD	IH	Hu
LS-A1519	3rd-CD	IH	Hu



(LS-A1513)

Brain, Neuron



(LS-A1519)

Brain, Neuron

## G Protein-Coupled Receptor GPR119

Subfamily: Lysophospholipid/Lysosphingolipid

LS-A548	3rd-CD	IH	Hu
LS-A549	C-Term-D	IH	Hu

Species Reactivity Hu: Human, Mo: Mouse, Mky: Monkey

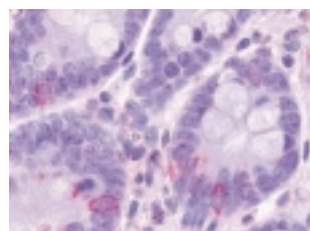
Application WB: Western blotting, IPP: Immunoprecipitation, FCM: Flow Cytometry, IC: Immunocytochemistry, IH: Immunohistochemistry, IF: Immunofluorescence

Code No.	Epitope	Application	Species	Reactivity
----------	---------	-------------	---------	------------

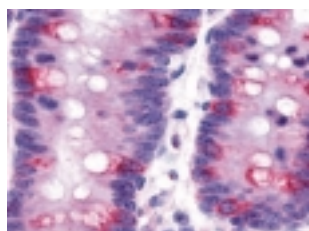
## G Protein-Coupled Receptor GPR120

Subfamily: Fatty acid

LS-A2003	N-Term-ExD	IH		Hu
LS-A2004	5th-TMD	IH		Hu
LS-A2005	3rd-CD	IH		Hu
LS-A2006	C-Term-D	IH		Hu



(LS-A2005)



(LS-A2006) Small intestine, Enterocytes

## G Protein-Coupled Receptor GPR126

Subfamily: Orphan-B

LS-A1720	N-Term-ExD	IH		Hu
----------	------------	----	--	----

## G Protein-Coupled Receptor GPR128

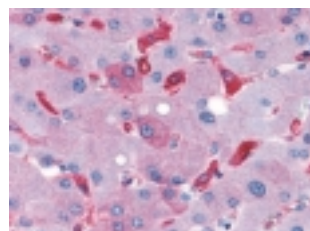
Subfamily: Orphan-B

LS-A8008	C-Term-D	IH		Hu
----------	----------	----	--	----

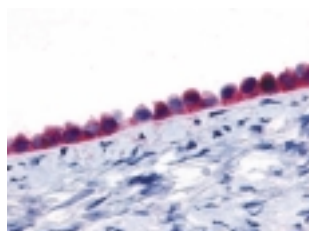
## G Protein-Coupled Receptor GPR133

Subfamily: Orphan-U

LS-A2034	N-Term-ExD	IH		Hu
LS-A2035	3rd-CD	IH		Hu



(LS-A8008)

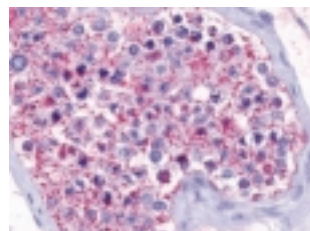


(LS-A2034) Ovary, Epithelium

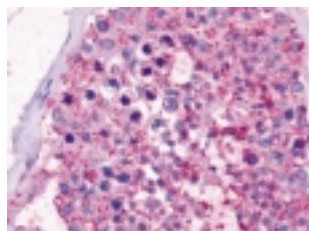
## G Protein-Coupled Receptor GPR136

Subfamily: Orphan-A

LS-A2144	7th-TMD	IH		Hu, Mo
LS-A2146	C-Term-D	IH		Hu



(LS-A2144)



(LS-A2146) Testis

Code No.	Epitope	Application	Species	Reactivity
----------	---------	-------------	---------	------------

## G Protein-Coupled Receptor GPR146

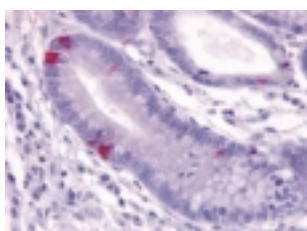
Subfamily: Orphan-U

LS-A1986	2nd-CD	IH		Hu
LS-A1988	3rd-CD	IH		Hu

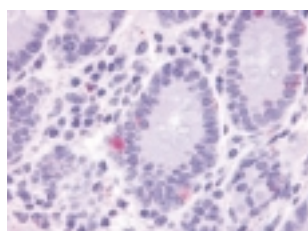
## G Protein-Coupled Receptor GPR148

Subfamily: Orphan-A

LS-A3181	C-Term-D	IH		Hu
LS-A3184	3rd-CD	IH		Hu



(LS-A3181)



(LS-A3184) Small intestine, Crypts

## G Protein-Coupled Receptor GPR150

Subfamily: Orphan-A

LS-A3345	N-Term-ExD	IH		Hu
LS-A3348	C-Term-D	IH		Hu

## G Protein-Coupled Receptor GPR151

Subfamily: Orphan-U

LS-A415	3rd-CD	IH		Hu
LS-A418	C-Term-D	IH		Hu
LS-A419	C-Term-D	IH		Hu

## G Protein-Coupled Receptor GPR152/PGR5

Subfamily: Orphan-U

LS-A435	3rd-CD	IH		Hu
LS-A436	C-Term-D	IH		Hu

## G Protein-Coupled Receptor GPR153

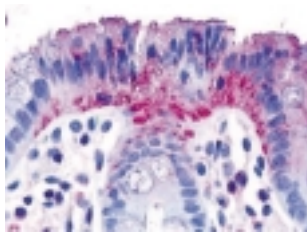
Subfamily: Orphan-U

LS-A2032	2nd-ECD	IH		Hu, Mo
LS-A3141	C-Term-D	IH		Hu

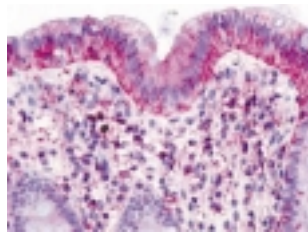
## G Protein-Coupled Receptor GPR160/GPCR150

Subfamily: Orphan-A

LS-A542	2nd-ECD	IH		Hu
LS-A619	1st-TMD	IH		Hu



(LS-A542)



(LS-A619)

Colon, Epithelium

Species Reactivity Hu: Human, Mo: Mouse, Mky: Monkey

Application WB: Western blotting, IPP: Immunoprecipitation, FCM: Flow Cytometry, IC: Immunocytochemistry, IH: Immunohistochemistry, IF: Immunofluorescence

Code No.	Epitope	Application	Species	Reactivity
----------	---------	-------------	---------	------------

## G Protein-Coupled Receptor GPR161/RE2

Subfamily: Orphan-U

LS-A331	N-Term-ExD	IH, IC	Hu
LS-A332	3rd-CD	IH	Hu
LS-A333	C-Term-D	IH	Hu

## G Protein-Coupled Receptor GPR171

Subfamily: Platelet activating factor

LS-A1223	2nd-ECD	IH	Hu
LS-A1226	C-Term-D	IH	Hu

## G Protein-Coupled Receptor GPR173/SREB3

Subfamily: Orphan-A

LS-A516	N-Term-ExD	IH	Hu
LS-A526	C-Term-D	IH	Hu, Mo, Rat
LS-A527	5th-TMD	IH	Hu, Mo, Rat

## G Protein-Coupled Receptor GPR174/JEG18

Subfamily: Orphan-A

LS-A407	2nd-ECD	IH	Hu
LS-A409	3rd-ECD	IH	Hu

## G Protein-Coupled Receptor GPR175

Subfamily: Orphan-U

LS-A1520	N-Term-ExD	IH	Hu
LS-A1522	1st-CD	IH, IC	Hu

## G Protein-Coupled Receptor GPRC5B (RAIG2)

Subfamily: Orphan-C

LS-A412	C-Term-D	IH	Hu
LS-A413	C-Term-D	IH	Hu
LS-A4084	N-Term-ExD	IH	Hu, Mo

## G Protein-Coupled Receptor GPRC5C (RAIG3)

Subfamily: Orphan-C

LS-A4075	N-Term-ExD	IH	Hu
LS-A4077	3rd-ECD	IH	Hu
LS-A4079	C-Term-D	IH	Hu

## G Protein-Coupled Receptor GPRC5D

Subfamily: Orphan-C

LS-A568	N-Term-ExD	IH	Hu
LS-A571	3rd-ECD	IH	Hu

## G Protein-Coupled Receptor GPRC6A

Subfamily: Amino acid receptor

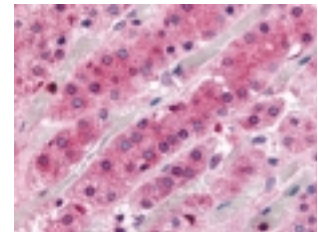
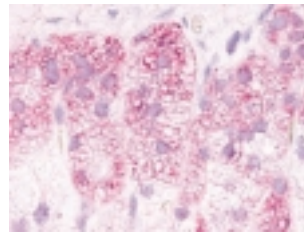
LS-A2576	N-Term-ExD	IH	Hu
LS-A2581	N-Term-ExD	IH	Hu

Code No.	Epitope	Application	Species	Reactivity
----------	---------	-------------	---------	------------

## G Protein-Coupled Receptor L1/G10D

Subfamily: Orphan-A

LS-A391	3rd-CD	IH, IC	Hu
LS-A4048	N-Term-ExD	IH, IC	Hu

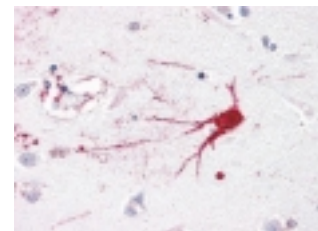
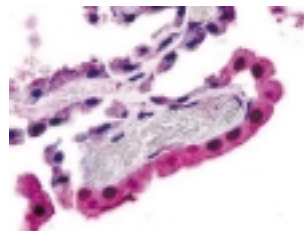


(LS-A391) Adrenal, Zona Glomerulosa (LS-A4048) Adrenal, Zona fasciculata

## G Protein-Coupled Receptor LGR6

Subfamily: Orphan-A

LS-A439	N-Term-ExD	IH	Hu
LS-A442	N-Term-ExD	IH	Hu



(LS-A439) Brain, Choroid plexus (LS-A442) Brain, Neuron

## G Protein-Coupled Receptor LGR7

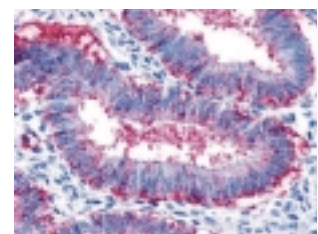
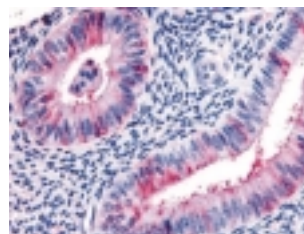
Subfamily: Relaxin

LS-A561	C-Term-D	IH	Hu
LS-A566	N-Term-ExD	IH	Hu

## G Protein-Coupled Receptor LGR8

Subfamily: Relaxin

LS-A4751	2nd-ECD	IH	Hu, Mo
LS-A4752	C-Term-D	IH	Hu, Mo
LS-A4753	2nd-CD	IH, WB	Hu, Mo
LS-A4754	3rd-CD	IH	Hu, Mo



(LS-A4751) Uterus (LS-A4753) Uterus

## G Protein-Coupled Receptor MAS1L

Subfamily: Orphan-A

LS-A187	C-Term-D	IH	Hu
---------	----------	----	----

Species Reactivity Hu: Human, Mo: Mouse, Mky: Monkey

Application WB: Western blotting, IPP: Immunoprecipitation, FCM: Flow Cytometry, IC: Immunocytochemistry, IH: Immunohistochemistry, IF: Immunofluorescence

Code No.	Epitope	Application	Species	Reactivity
----------	---------	-------------	---------	------------

### G Protein-Coupled Receptor MCHR1/GPR24

Subfamily: Melanin-concentrating hormone receptor

LS-A1532	N-Term-ExD	IH		Hu
LS-A1533	N-Term-ExD	IH		Hu
LS-A1539	N-Term-ExD	IH		Hu

### G Protein-Coupled Receptor MCHR2/GPR145

Subfamily: Melanin-concentrating hormone receptor

LS-A1849	1st-CD	IH		Hu
LS-A1907	C-Term-D	IH, IC		Hu

### G Protein-Coupled Receptor MRGE

Subfamily: Orphan-A

LS-A4245	C-Term-D	IH		Hu, Mky
LS-A4343	C-Term-D	IH		Hu

### G Protein-Coupled Receptor MRGX1 (SNSR3/SNSR4)

Subfamily: Opioid

LS-A2756	N-Term-ExD	IH, IC, WB		Hu
----------	------------	------------	--	----

### G Protein-Coupled Receptor MRGX2

Subfamily: Proadrenomedullin N-terminal peptide

LS-A2750	C-Term-D	IH		Hu
LS-A6644	2nd-ECD	IH		Hu

### G Protein-Coupled Receptor MRGX3 (SNSR1/SNSR2)

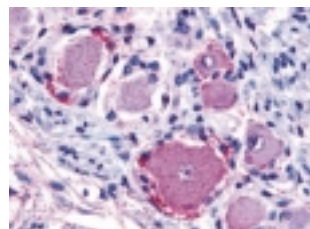
Subfamily: Orphan-A

LS-A5120	1st-ECD	IH		Hu
LS-A5122	3rd-ECD	IH		Hu

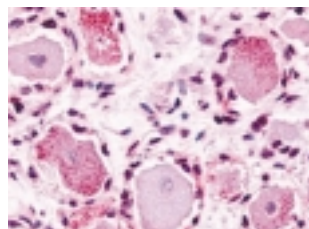
### G Protein-Coupled Receptor MRGX4 (SNSR5/SNSR6)

Subfamily: Orphan-A

LS-A2727	C-Term-D	IH		Hu
LS-A2729	N-Term-ExD	IH		Hu



(LS-A2727) Spinal Cord, Dorsal root ganglion



(LS-A2729) Spinal Cord, Dorsal root ganglion

### G Protein-Coupled Receptor OGR1/GPR68

Subfamily: Lysophospholipid/Lysosphingolipid

LS-A1193	2nd-ECD	IH		Hu
LS-A1194	C-Term-D	IH		Hu, Mo, Rat
LS-A1195	C-Term-D	IH, IC		Hu

Code No.	Epitope	Application	Species	Reactivity
----------	---------	-------------	---------	------------

### G Protein-Coupled Receptor ORF4

Subfamily: Orphan-U

LS-A2052	1st-ECD	IH		Hu
LS-A2053	2nd-CD	IH		Hu
LS-A2059	2nd-ECD	IH		Hu

### G Protein-Coupled Receptor PGR3/GPR139/TGR20

Subfamily: Orphan-U

LS-A2716	3rd-CD	IH		Hu
LS-A2717	1st-CD	IH		Hu
LS-A2719	4th-TMD	IH		Hu

### G Protein-Coupled Receptor R35/PGR10/GPR149

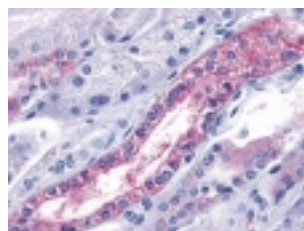
Subfamily: Orphan-U

LS-A5100	C-Term-D	IH		Hu
LS-A5107	N-Term-ExD	IH		Hu

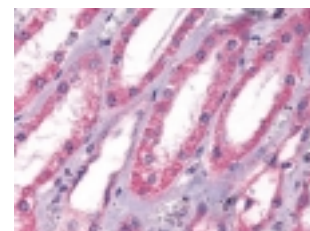
### G Protein-Coupled Receptor RDC1

Subfamily: Adrenomedullin

LS-A1893	2nd-ECD	IH, FCM		Hu, Rat
LS-A1437		IH		Hu
LS-A1439	3rd-CD	IH, WB		Hu



(LS-A1893) Kidney, Renal tubule



(LS-A1439) Kidney, Renal tubules

### G Protein-Coupled Receptor SALPR/GPCR135

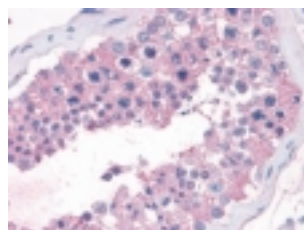
Subfamily: Relaxin

LS-A1742	2nd-CD	IH		Hu
LS-A1745	C-Term-D	IH		Hu

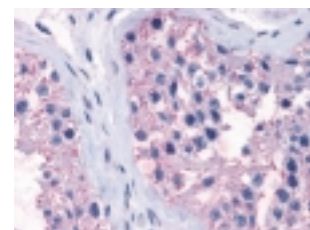
### G Protein-Coupled Receptor TAS1R1

Subfamily: Taste

LS-A1992	N-Term-ExD	IH, FCM		Hu
LS-A1994	3rd-CD	IH		Hu



(LS-A1992) Testis



(LS-A1994) Testis

Species Reactivity Hu: Human, Mo: Mouse, Mky: Monkey

Application WB: Western blotting, IPP: Immunoprecipitation, FCM: Flow Cytometry, IC: Immunocytochemistry, IH: Immunohistochemistry, IF: Immunofluorescence

Code No.	Epitope	Application	Species Reactivity
----------	---------	-------------	--------------------

## G Protein-Coupled Receptor TAS1R2

Subfamily: Taste

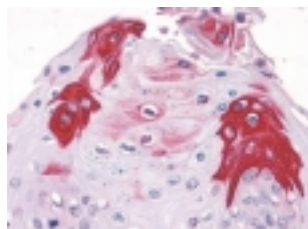
LS-A2007	N-Term-ExD	IH	Hu
----------	------------	----	----

## G Protein-Coupled Receptor TAS1R3

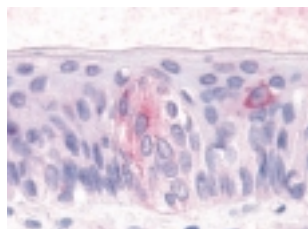
Subfamily: Taste

LS-A5060	N-Term-ExD	IH, WB	Hu
----------	------------	--------	----

LS-A5073	N-Term-ExD	IH	Hu
----------	------------	----	----



(LS-A5060) Tongue, Squamous epithelium



(LS-A5073) Tongue, Taste receptor cells

## G Protein-Coupled Receptor TM7SF1

Subfamily: Orphan-U

LS-A788	2nd-CD	IH, IC	Hu, Mo
---------	--------	--------	--------

LS-A792	C-Term-D	IC	Hu, Mo
---------	----------	----	--------

LS-A793	C-Term-D	IH	Hu, Mo
---------	----------	----	--------

## G Protein-Coupled Receptor TM7XN1/GPR56

Subfamily: Orphan-B

LS-A1213	N-Term-ExD	IH, IC	Hu, Mo
----------	------------	--------	--------

LS-A1214	N-Term-ExD	IH	Hu
----------	------------	----	----

LS-A4027	N-Term-ExD	IC	Hu
----------	------------	----	----

LS-A8182	1st-CD	IH	Hu, Mo
----------	--------	----	--------

## GABA(B) Receptor 1

Subfamily: GABA(B)

LS-A5270	N-Term-ExD	IH	Hu, Mo, Rat
----------	------------	----	-------------

LS-A5332	N-Term-ExD	IH	Hu, Mo, Rat
----------	------------	----	-------------

## Galanin Receptor GalR1

Subfamily: Galanin

LS-A4013	C-Term-D	IH	Hu
----------	----------	----	----

LS-A4105	N-Term-ExD	IH, IC	Hu
----------	------------	--------	----

LS-A6168	2nd-ECD	IH	Hu
----------	---------	----	----

## Galanin Receptor GalR2

Subfamily: Galanin

LS-A4154	C-Term-D	IH	Hu
----------	----------	----	----

LS-A4155	C-Term-D	IH	Hu
----------	----------	----	----

LS-A4156	7th-TMD	IH	Hu
----------	---------	----	----

Code No.	Epitope	Application	Species Reactivity
----------	---------	-------------	--------------------

## Galanin Receptor GalR3

Subfamily: Galanin

LS-A204	C-Term-D	IH	Hu, Rat
---------	----------	----	---------

LS-A205	C-Term-D	IH	Hu, Rat
---------	----------	----	---------

## Gastric Inhibitory Polypeptide Receptor

Subfamily: Gastric inhibitory polypeptide

LS-A1250	N-Term-ExD	IH	Hu
----------	------------	----	----

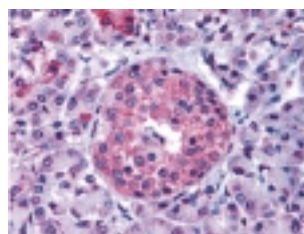
LS-A1251	N-Term-ExD	IH	Hu
----------	------------	----	----

LS-A1253	C-Term-D	IH, IC	Hu
----------	----------	--------	----

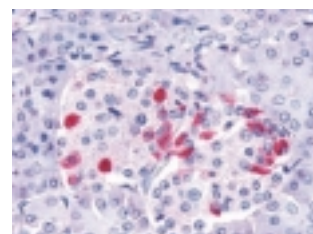
LS-A3839	N-Term-ExD	IH	Hu
----------	------------	----	----

LS-A3840	N-Term-ExD	IH	Hu
----------	------------	----	----

LS-A3842	3rd-CD	IH	Hu
----------	--------	----	----



(LS-A3840) Pancreas



(LS-A3842) Pancreas, Islet of Langerhans

## Gastrin-Releasing Peptide Receptor

Subfamily: Bombesin

LS-A830	2nd-ECD	IH, IC, WB	Hu
---------	---------	------------	----

LS-A831	3rd-CD	IH, IC	Hu, Mo, Rat
---------	--------	--------	-------------

## Glucagon Receptor

Subfamily: Glucagon

LS-A837	1st-ECD	IH	Hu
---------	---------	----	----

LS-A838	N-Term-ExD	IH	Hu
---------	------------	----	----

LS-A839	N-Term-ExD	IH	Hu
---------	------------	----	----

LS-A4256	N-Term-ExD	IH	Hu
----------	------------	----	----

LS-A4257	N-Term-ExD	IH	Hu
----------	------------	----	----

LS-A4258	N-Term-ExD	IH	Hu
----------	------------	----	----

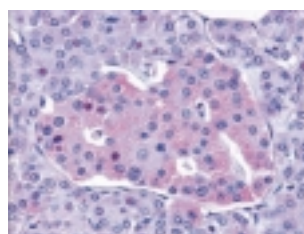
LS-A4263	C-Term-D	IH	Hu
----------	----------	----	----

## Glucagon-Like Peptide 1 Receptor

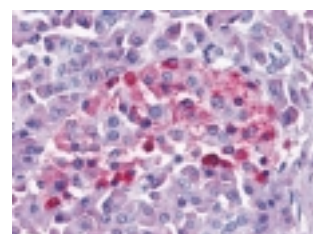
Subfamily: Glucagon

LS-A1205	N-Term-ExD	IH	Hu, Mo
----------	------------	----	--------

LS-A1206	N-Term-ExD	IH	Hu, Mky
----------	------------	----	---------



(LS-A1205) Pancreas, Islet of Langerhans



(LS-A1206) Pancreas, Islet of Langerhans

Species Reactivity Hu: Human, Mo: Mouse, Mky: Monkey

Application WB: Western blotting, IPP: Immunoprecipitation, FCM: Flow Cytometry, IC: Immunocytochemistry, IH: Immunohistochemistry, IF: Immunofluorescence

Code No.	Epitope	Application	Species	Reactivity
----------	---------	-------------	---------	------------

## Glucagon-Like Peptide 2 Receptor

Subfamily: Glucagon

LS-A1312	N-Term-ExD	IH, IC, WB, IPP	Hu, Porcine
LS-A1315	C-Term-D	IH	Hu

## Gonadotropin-Releasing Hormone Receptor

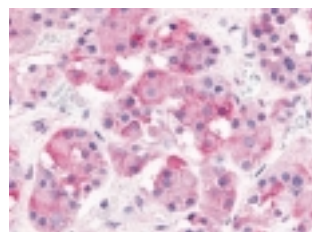
Subfamily: Releasing hormone

LS-A209	3rd-CD	IH	Hu
---------	--------	----	----

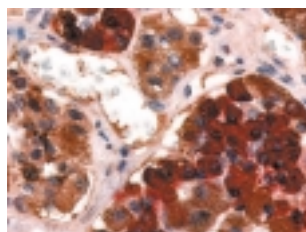
## Growth Hormone Releasing Hormone Receptor

Subfamily: Growth hormone releasing hormone

LS-A834	N-Term-ExD	IH	Hu
LS-A835	3rd-CD	IH	Hu
LS-A836	C-Term-D	IH	Hu



(LS-A834)



(LS-A835) Pituitary, Anterior (double stained with GH)

## Growth Hormone Secretagogue Receptor (GHSR)

Subfamily: Releasing hormone

LS-A581	N-Term-ExD	IH	Hu
LS-A582		IH	Hu
LS-A6576	N-Term-ExD	IH	Hu

## Histamine H1 Receptor

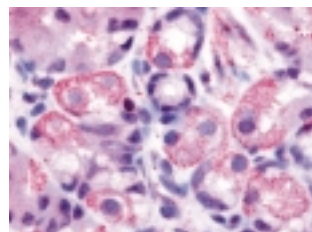
Subfamily: Histamine

LS-A1167	2nd-ECD	IH	Hu
LS-A1170	3rd-CD	IH	Hu

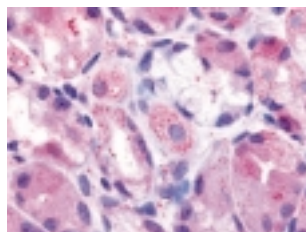
## Histamine H2 Receptor

Subfamily: Histamine

LS-A1175	3rd-CD	IH	Hu
LS-A1176	3rd-ECD	IH	Hu, Rat



(LS-A1175)



(LS-A1176) Stomach, Parietal cells

Code No.	Epitope	Application	Species	Reactivity
----------	---------	-------------	---------	------------

## Histamine H3 Receptor

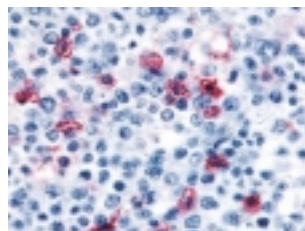
Subfamily: Histamine

LS-A475	3rd-CD	IH, WB	Hu
LS-A476	3rd-CD	IH, IC	Hu
LS-A3262	2nd-CD	IH	Hu

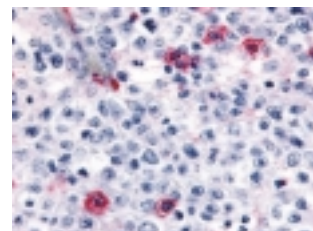
## Histamine H4 Receptor

Subfamily: Histamine

LS-A1901	2nd-ECD	IH	Hu
LS-A3775	1st-CD	IH	Hu
LS-A3785	C-Term-D	IH	Hu
LS-A6816	3rd-CD	IH	Hu



(LS-A3775)



(LS-A6816)

Lymph node

Lymph node

## Interleukin 8 Receptor A

Subfamily: Chemokine

LS-A806	N-Term-ExD	IH, IC	Hu
LS-A808	C-Term-D	IH	Hu

## Interleukin 8 Receptor B (CXCR2)

Subfamily: Chemokine

LS-A802	N-Term-ExD	IH	Hu
LS-A804	2nd-ECD	IH	Hu

## Latrophilin-1

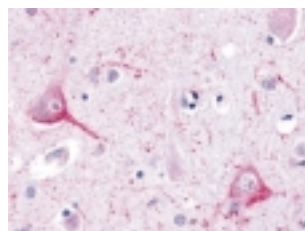
Subfamily: Orphan-B

LS-A1126	N-Term-ExD	IH	Hu, Rat
LS-A1129	C-Term-D	IH	Hu

## Latrophilin-2

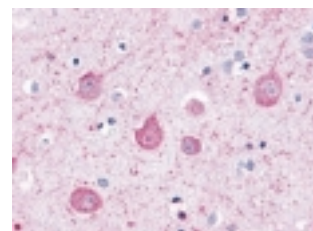
Subfamily: Orphan-B

LS-A1132	N-Term-ExD	IH	Hu
LS-A1133	N-Term-ExD	IH	Hu, Rat
LS-A1136	C-Term-D	IH	Hu



(LS-A1132)

Brain, Neurons and glia



(LS-A1136)

Brain, Neurons and glia

Species Reactivity Hu: Human, Mo: Mouse, Mky: Monkey

Application WB: Western blotting, IPP: Immunoprecipitation, FCM: Flow Cytometry, IC: Immunocytochemistry, IH: Immunohistochemistry, IF: Immunofluorescence

Code No.	Epitope	Application	Species Reactivity
----------	---------	-------------	--------------------

## Latrophilin-3

Subfamily: Orphan-B

LS-A1138	C-Term-D	IH	Hu
LS-A1497	C-Term-D	IH	Hu

## Leukocyte Antigen CD97

Subfamily: CD55

LS-A2644	N-Term-ExD	IH, IC	Hu
LS-A2651	N-Term-ExD	IH	Hu
LS-A2652	3rd-CD	IH, IC	Hu

## Leukotriene B4 Receptor BLT1

Subfamily: Chemoattractant

LS-A1492	1st-CD	IH	Hu
LS-A1493	2nd-CD	IH	Hu
LS-A1494	3rd-CD	IH	Hu, Mo, Rat
LS-A1495	C-Term-D	IH	Hu, Rat

## Leukotriene B4 Receptor BLT2

Subfamily: Chemoattractant

LS-A2097	N-Term-ExD	IH	Hu
LS-A2099	3rd-CD	IH	Hu
LS-A2102	C-Term-D	IH	Hu

## Lung Seven Transmembrane Receptor 2 (LUSTR2/GPR108)

Subfamily: Orphan-U

LS-A4945	1st-CD	IH	Hu
LS-A4946	1st-CD	IH	Hu
LS-A4985	2nd-CD	IH	Hu, Mo, Rat

## Luteinizing Hormone/Choriogonadotropin Receptor

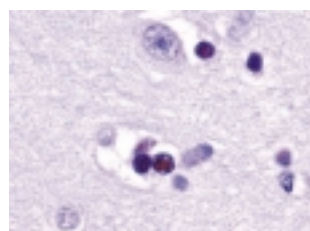
Subfamily: Glycoprotein hormone

LS-A1434	N-Term-ExD	IH	Hu
LS-A1436	C-Term-D	IH	Hu

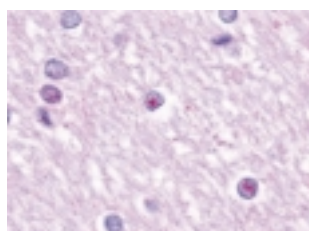
## Lysophosphatidic Acid Receptor Edg2/LPA1

Subfamily: Lysophospholipid/Lysosphingolipid

LS-A211	3rd-CD	IH	Hu, Mo, Rat
LS-A212	N-Term-ExD	IH, WB	Hu



(LS-A211) Brain, Neuron and glia



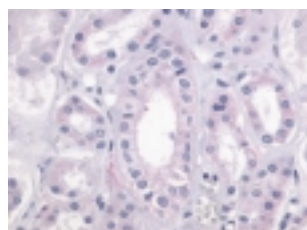
(LS-A212) Brain, Glia

Code No.	Epitope	Application	Species Reactivity
----------	---------	-------------	--------------------

## Lysophosphatidic Acid Receptor GPR23/LPA4/P2Y9

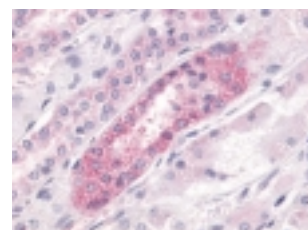
Subfamily: Lysophospholipid/Lysosphingolipid

LS-A871	3rd-CD	IH	Hu, Mo, Rat
LS-A873		IH	Hu
LS-A1895	N-Term-ExD	IH, FCM	Hu, Mo, Rat



(LS-A871)

Kidney



(LS-A1895)

Kidney

## Lysophosphatidic Acid Receptor Edg4/LPA2

Subfamily: Lysophospholipid/Lysosphingolipid

LS-A3759	3rd-CD	IH, IC, WB	Hu
LS-A3760	C-Term-D	IH	Hu

## Lysophosphatidic Acid Receptor Edg7/LPA3

Subfamily: Lysophospholipid/Lysosphingolipid

LS-A1014	3rd-CD	IH	Hu, Mo, Rat
LS-A1017	2nd-CD	IH	Hu, Mo

## Mas Proto-Oncogene

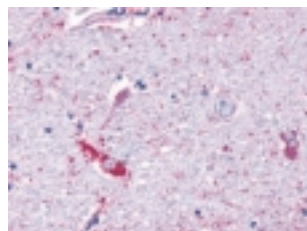
Subfamily: Orphan-A

LS-A1528	1st-CD	IH	Hu, Mo, Rat
LS-A1531	C-Term-D	IH	Hu

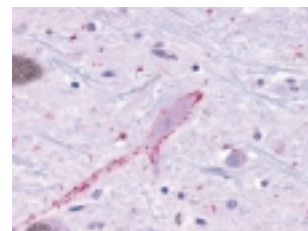
## MAS-Related GPR, Member F (MRGPRF)

Subfamily: Orphan-U

LS-A1983	N-Term-ExD	IH	Hu
LS-A2173	C-Term-D	IH	Hu, Mo, Rat



(LS-A1983) Brain, Neurons and glia



(LS-A2173) Brain, Neurons and glia

## MAS-Related GPR, Member D (MRGPRD/TGR7)

Subfamily: Orphan-A

LS-A4128	3rd-CD	IH	Hu
LS-A4129	3rd-CD	IH	Hu

## Melanocortin 1 Receptor (MC1R)

Subfamily: Melanocortin

LS-A1039	2nd-CD	IH	Hu
LS-A1040	3rd-CD	IH	Hu

Species Reactivity Hu: Human, Mo: Mouse, Mky: Monkey

Application WB: Western blotting, IPP: Immunoprecipitation, FCM: Flow Cytometry, IC: Immunocytochemistry, IH: Immunohistochemistry, IF: Immunofluorescence

Code No.	Epitope	Application	Species Reactivity
----------	---------	-------------	--------------------

## Melanocortin 2 Receptor (ACTH Receptor)

LS-A4		IH	Hu
-------	--	----	----

## Melanocortin 4 Receptor (MC4R)

Subfamily: Melanocortin

LS-A1032	N-Term-ExD	IH, IC	Hu
----------	------------	--------	----

LS-A1033	3rd-CD	IH	Hu
----------	--------	----	----

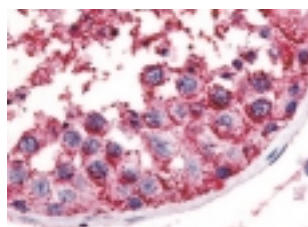
LS-A4165	N-Term-ExD	IH	Hu
----------	------------	----	----

## Melanocortin 5 Receptor (MC5R)

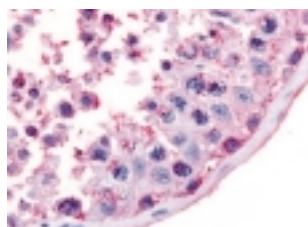
Subfamily: Melanocortin

LS-A1022	N-Term-ExD	IH	Hu
----------	------------	----	----

LS-A1024	1st-ECD	IH	Hu
----------	---------	----	----



(LS-A1022) Testis, Spermatogenic series



(LS-A1024) Testis, Spermatogenic series

## Melatonin Receptor Type 1A (MT1)

Subfamily: Melatonin

LS-A214	2nd-CD	IH	Hu
---------	--------	----	----

LS-A216	3rd-CD	IH	Hu
---------	--------	----	----

## Melatonin Receptor Type 1B (MT2)

Subfamily: Melatonin

LS-A932	3rd-CD	IH	Hu
---------	--------	----	----

LS-A934	3rd-ECD	IH	Hu
---------	---------	----	----

## Melatonin-Related Receptor (GPR50)

Subfamily: Orphan-A

LS-A751	3rd-CD	IH	Hu
---------	--------	----	----

LS-A6618	3rd-CD	IH	Hu
----------	--------	----	----

LS-A6621	C-Term-D	IH	Hu
----------	----------	----	----

LS-A6676	C-Term-D	IH	Hu
----------	----------	----	----

## Metabotropic Glutamate Receptor 1

Subfamily: Metabotropic glutamate

LS-A879	N-Term-ExD	IH	Hu
---------	------------	----	----

LS-A880	C-Term-D	IH	Hu
---------	----------	----	----

LS-A882	C-Term-D	IH	Hu
---------	----------	----	----

Code No.	Epitope	Application	Species Reactivity
----------	---------	-------------	--------------------

## Metabotropic Glutamate Receptor 2

Subfamily: Metabotropic glutamate

LS-A892	N-Term-ExD	IH, IC, WB	Hu, Rat
---------	------------	------------	---------

LS-A895	N-Term-ExD	IH, WB	Hu
---------	------------	--------	----

LS-A896	2nd-ECD	IH, IC, WB	Hu, Rat
---------	---------	------------	---------

LS-A6735	N-Term-ExD	IH	Hu, Rat
----------	------------	----	---------

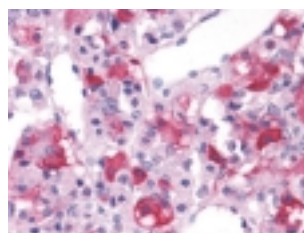
## Metabotropic Glutamate Receptor 3

Subfamily: Metabotropic glutamate

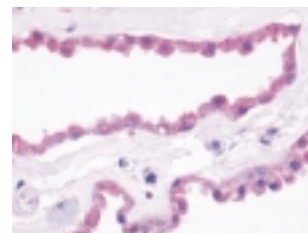
LS-A899	N-Term-ExD	IH, IC	Hu, Mo, Rat
---------	------------	--------	-------------

LS-A3208	N-Term-ExD	IH, IC, WB	Hu
----------	------------	------------	----

LS-A3218	N-Term-ExD	IH, IC, WB	Hu
----------	------------	------------	----



(LS-A899) Brain, Pituitary



(LS-A3208) Brain, Choroid plexus

## Metabotropic Glutamate Receptor 4

Subfamily: Metabotropic glutamate

LS-A909	N-Term-ExD	IH	Hu, Rat
---------	------------	----	---------

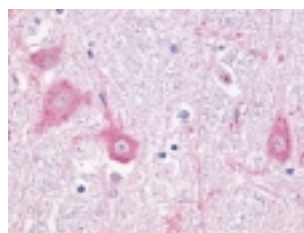
LS-A4713	C-Term-D	IH, WB	Hu, Rat
----------	----------	--------	---------

## Metabotropic Glutamate Receptor 5

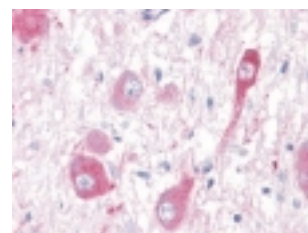
Subfamily: Metabotropic glutamate

LS-A885	C-Term-D	IH, WB	Hu, Mo, Rat
---------	----------	--------	-------------

LS-A889	C-Term-D	IH, WB	Hu, Mky
---------	----------	--------	---------



(LS-A885) Brain, Neurons and glia



(LS-A889) Brain, Neurons and glia

## Metabotropic Glutamate Receptor 6

Subfamily: Metabotropic glutamate

LS-A4655	N-Term-ExD	IH, WB	Hu, Rat
----------	------------	--------	---------

## Metabotropic Glutamate Receptor 7

Subfamily: Metabotropic glutamate

LS-A917	N-Term-ExD	IH, WB	Hu, Rat
---------	------------	--------	---------

LS-A918	N-Term-ExD	IH	Hu, Rat
---------	------------	----	---------

LS-A921	N-Term-ExD	IH, IC, WB	Hu
---------	------------	------------	----

LS-A2694	2nd-ECD	IH	Hu, Rat
----------	---------	----	---------

Species Reactivity Hu: Human, Mo: Mouse, Mky: Monkey

Application WB: Western blotting, IPP: Immunoprecipitation, FCM: Flow Cytometry, IC: Immunocytochemistry, IH: Immunohistochemistry, IF: Immunofluorescence

Code No.	Epitope	Application	Species Reactivity
----------	---------	-------------	--------------------

## Metabotropic Glutamate Receptor 8

Subfamily: Metabotropic glutamate

LS-A922	N-Term-ExD	IH, IC	Hu, Mo, Rat
LS-A923	N-Term-ExD	IH	Hu, Mo, Rat
LS-A925	C-Term-D	IH	Hu, Mo, Rat

## Motilin Receptor (GPR38)

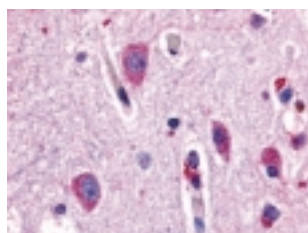
Subfamily: Motilin

LS-A134		IH	Hu
---------	--	----	----

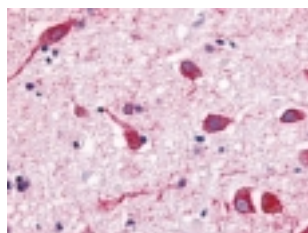
## Muscarinic Acetylcholine Receptor M2

Subfamily: Acetylcholine

LS-A1330	3rd-CD	IH	Hu
LS-A1331	3rd-CD	IH	Hu, Mo, Rat
LS-A1333	3rd-CD	IH	Hu, Mo, Rat
LS-A1831	3rd-CD	IH	Hu



(LS-A1330) Brain, Neurons and glia



(LS-A1331) Brain, Neurons and glia

## Muscarinic Acetylcholine Receptor M3

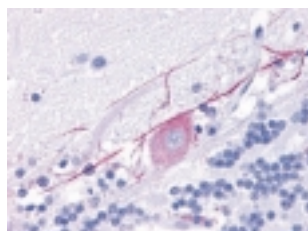
Subfamily: Acetylcholine

LS-A5259	3rd-CD	IH	Hu
LS-A5378	2nd-CD	IH	Hu

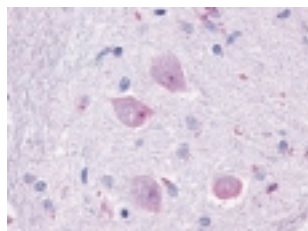
## Muscarinic Acetylcholine Receptor M4

Subfamily: Acetylcholine

LS-A219	3rd-CD	IH	Hu
LS-A220	3rd-CD	IH	Hu, Mo, Rat



(LS-A219) Brain, Purkinje neurons



(LS-A220) Brain, Neurons and glia

## Muscarinic Acetylcholine Receptor M5

Subfamily: Acetylcholine

LS-A1334	3rd-CD	IH	Hu
LS-A1338	3rd-CD	IH	Hu

Code No.	Epitope	Application	Species Reactivity
----------	---------	-------------	--------------------

## Neuromedin B Receptor

Subfamily: Bombesin

LS-A825	3rd-CD	IH	Hu, Mo
LS-A828	C-Term-D	IH	Hu

## Neuromedin K Receptor-Like Protein (NK4R)

Subfamily: Tachykinin

LS-A1820	N-Term-ExD	IH	Hu
LS-A1822	C-Term-D	IH	Hu

## Neuromedin U Receptor 1 (GPR66)

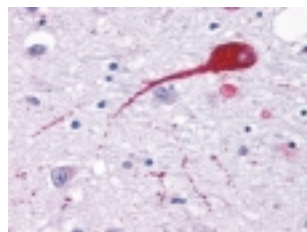
Subfamily: Neuromedin

LS-A396	3rd-CD	IH	Hu
LS-A397	3rd-CD	IH	Hu

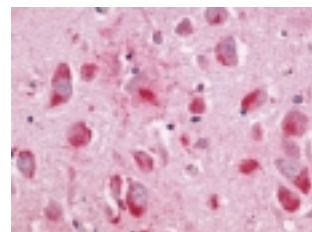
## Neuromedin U Receptor 2

Subfamily: Neuromedin

LS-A422	3rd-CD	IH	Hu
LS-A423	C-Term-D	IH	Hu



(LS-A422) Brain, Neurons and glia



(LS-A423) Brain, Neurons and glia

## Neuropeptide FF 1 Receptor (GPR147)

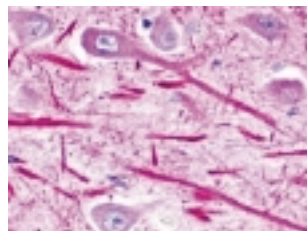
Subfamily: Neuropeptide

LS-A1903	2nd-ECD	IH	Hu
LS-A1905	C-Term-D	IH	Hu

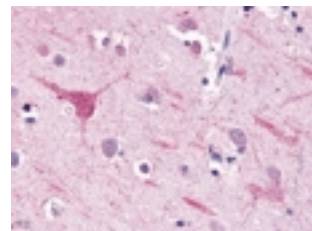
## Neuropeptide FF 2 Receptor (GPR74)

Subfamily: Neuropeptide

LS-A463	N-Term-ExD	IH	Hu
LS-A3302	3rd-ECD	IH	Hu
LS-A3304	C-Term-D	IH	Hu



(LS-A463) Brain, Neurons and glia



(LS-A3302) Brain, Neurons and glia

Species Reactivity Hu: Human, Mo: Mouse, Mky: Monkey

Application WB: Western blotting, IPP: Immunoprecipitation, FCM: Flow Cytometry, IC: Immunocytochemistry, IH: Immunohistochemistry, IF: Immunofluorescence

Code No.	Epitope	Application	Species Reactivity
----------	---------	-------------	--------------------

## Neuropeptide Y Receptor Type 1

Subfamily: Neuropeptide

LS-A1064	2nd-ECD	IH	Hu
LS-A1065	3rd-CD	IH	Hu, Mo, Rat

## Neuropeptide Y Receptor Type 2

Subfamily: Neuropeptide

LS-A1061	C-Term-D	IH	Hu
----------	----------	----	----

## Neuropeptide Y Receptor Type 4

Subfamily: Neuropeptide

LS-A1069	2nd-ECD	IH	Hu
LS-A1070	3rd-CD	IH	Hu
LS-A1071	C-Term-D	IH	Hu

## Neuropeptide Y Receptor Type 5

Subfamily: Neuropeptide

LS-A1072	1st-CD	IH	Hu, Rat
LS-A1074	3rd-CD	IH, IC	Hu
LS-A1075	3rd-CD	IH	Hu
LS-A1077	3rd-CD	IH, IC	Hu

## Neurotensin Receptor Type 1 (NTR1)

Subfamily: Neurotensin

LS-A935	N-Term-ExD	IH	Hu
LS-A938	3rd-CD	IH	Hu
LS-A939	C-Term-D	IH	Hu

## Neurotensin Receptor Type 2 (NTR2)

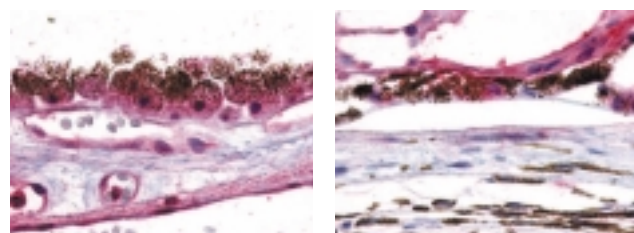
Subfamily: Neurotensin

LS-A1269	C-Term-D	IH	Hu
LS-A3747	3rd-ECD	IH	Hu

## Ocular Albinism 1 (OA1/GPR143)

Subfamily: Orphan-U

LS-A2123	N-Term-ExD	IH	Hu
LS-A2128	C-Term-D	IH	Hu



(LS-A2123)

Eye, Retina

(LS-A2128)

Eye, Retina

## Olfactory Receptor OR16/OR23

Subfamily: Olfactory

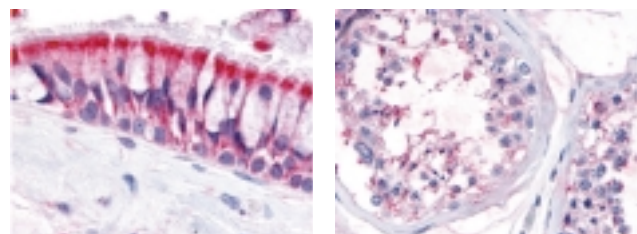
LS-A3157	1st-ECD	IH	Hu
LS-A3159	2nd-ECD	IH	Hu, Mky

Code No.	Epitope	Application	Species Reactivity
----------	---------	-------------	--------------------

## Olfactory Receptor OR6N1

Subfamily: Olfactory

LS-A3227	1st-ECD	IH	Hu
LS-A3228	1st-ECD	IH	Hu, Mo



(LS-A3227) Nasal mucosa, Respiratory epithelium

(LS-A4541) Testis, Seminiferous epithelium

## Olfactory Receptor OR10R2

Subfamily: Olfactory

LS-A4541	C-Term-D	IH	Hu
LS-A4554	2nd-ECD	IH	Hu

## Olfactory Receptor, Family 2, Subfamily A, Member 4 (OR2A4)

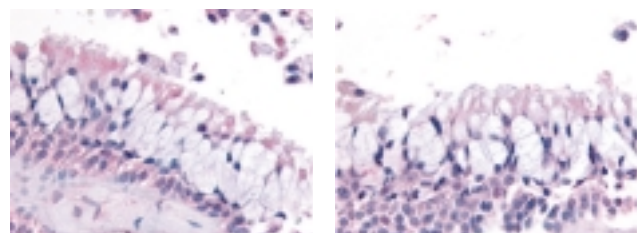
Subfamily: Olfactory

LS-A3900	3rd-CD	IH	Hu
LS-A3901	2nd-ECD	IH	Hu
LS-A3903	3rd-ECD	IH	Hu

## Olfactory Receptor, Homolog to Mouse MOR105-3

Subfamily: Olfactory

LS-A4354	N-Term-ExD	IH	Hu
LS-A4355	C-Term-D	IH	Hu



(LS-A4354) Nasal mucosa, Respiratory epithelium

(LS-A4355) Nasal mucosa, Respiratory epithelium

## Olfactory Receptor, Family 2, Subfamily H, Member 2

Subfamily: Olfactory

LS-A4408	C-Term-D	IH	Hu
LS-A4840	1st-CD	IH	Hu

## Opioid Receptor, Delta 1 (OPRD1)

Subfamily: Opioid

LS-A222	N-Term-ExD	IH	Hu
LS-A225	C-Term-D	IH	Hu
LS-A226	C-Term-D	IH	Hu

Species Reactivity Hu: Human, Mo: Mouse, Mky: Monkey

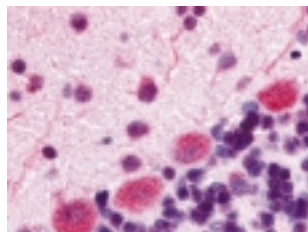
Application WB: Western blotting, IPP: Immunoprecipitation, FCM: Flow Cytometry, IC: Immunocytochemistry, IH: Immunohistochemistry, IF: Immunofluorescence

Code No.	Epitope	Application	Species Reactivity
----------	---------	-------------	--------------------

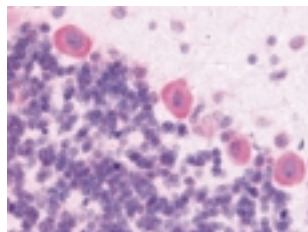
## Opioid Receptor, Kappa 1 (OPRK1)

Subfamily: Opioid

LS-A228	2nd-ECD	IH	Hu, Mo, Rat
LS-A230	C-Term-D	IH	Hu, Mo, Rat



(LS-A228) Rat brain, Purkinje neurons



(LS-A230) Rat brain, Purkinje neurons

## Opioid Receptor, Mu 1 (OPRM1)

Subfamily: Opioid

LS-A233	3rd-ECD	IH	Hu
LS-A234	C-Term-D	IH	Hu

## Orexin Receptor 1 (OX1R)

Subfamily: Orexin

LS-A6638	2nd-ECD	IH	Hu, Rat
LS-A6641	3rd-CD	IH	Hu, Rat
LS-A6677	C-Term-D	IH	Hu

## Orphan G Protein-Coupled Receptor CAD69655.1

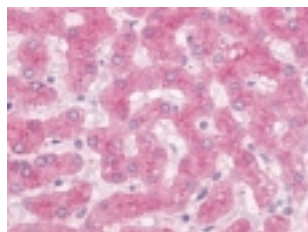
Subfamily: Orphan-U

LS-A4725	N-Term-ExD	IH	Hu
LS-A4726	N-Term-ExD	IH	Hu

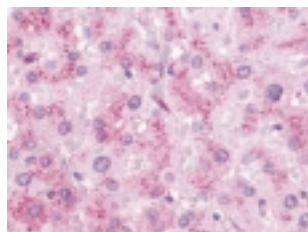
## Oxoecosanoid Receptor 1 (OXER1)

Subfamily: Chemoattractant

LS-A2266	C-Term-D	IH	Hu
LS-A2272	C-Term-D	IH	Hu



(LS-A2266)



(LS-A2272) Liver

## Oxytocin Receptor

Subfamily: Vasopressin/oxytocin

LS-A244	N-Term-ExD	IH	Hu
LS-A246	3rd-CD	IH	Hu

Code No.	Epitope	Application	Species Reactivity
----------	---------	-------------	--------------------

## PACAP Receptor Type 1

Subfamily: Vasoactive intestinal polypeptide

LS-A946	N-Term-ExD	IH	Hu
LS-A948	C-Term-D	IH	Hu

## PAEL Receptor (GPR37)

Subfamily: Orphan-A

LS-A129	N-Term-ExD	IH	Hu
LS-A131	N-Term-ExD	IH	Hu

## Parathyroid Hormone Receptor 1 (PTH1R)

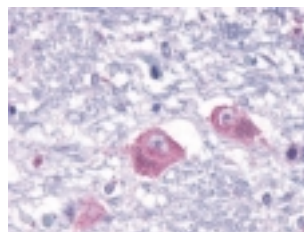
Subfamily: Parathyroid hormone

LS-A761	N-Term-ExD	IH	Hu
LS-A762		IH	Hu

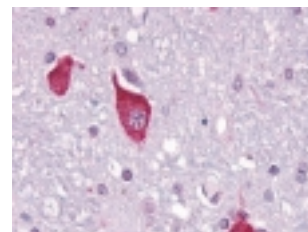
## Parathyroid Hormone Receptor 2 (PTH2R)

Subfamily: Parathyroid hormone

LS-A249	1st-ECD	IH	Hu
LS-A250	C-Term-D	IH	Hu



(LS-A249) Brain, Neurons and glia



(LS-A250) Brain, Neurons and glia

## Peropsin

Subfamily: Opsin

LS-A1150	3rd-CD	IH	Hu
----------	--------	----	----

## Prokineticin Receptor 1 (GPR73A)

Subfamily: Prokineticin

LS-A3152	C-Term-D	IH	Hu, Mky
LS-A6684	N-Term-ExD	IH, WB	Hu

## Prokineticin Receptor 2 (GPR73B)

Subfamily: Prokineticin

LS-A3148	N-Term-ExD	IH	Hu
LS-A3155	C-Term-D	IH	Hu

## Prolactin Releasing Hormone Receptor (GPR10)

Subfamily: Releasing hormone

LS-A1088	2nd-ECD	IH	Hu
LS-A3915	2nd-ECD	IH	Hu

Species Reactivity Hu: Human, Mo: Mouse, Mky: Monkey

Application WB: Western blotting, IPP: Immunoprecipitation, FCM: Flow Cytometry, IC: Immunocytochemistry, IH: Immunohistochemistry, IF: Immunofluorescence

Code No.	Epitope	Application	Species	Reactivity
----------	---------	-------------	---------	------------

## Prostacyclin Receptor

Subfamily: Prostanoid

LS-A4395	N-Term-ExD	IH		Hu
----------	------------	----	--	----

## Prostaglandin D2 Receptor

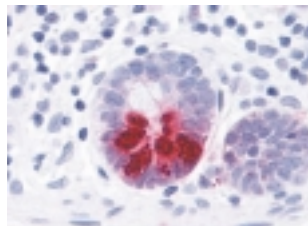
Subfamily: Prostanoid

LS-A458	N-Term-ExD	IH		Hu
---------	------------	----	--	----

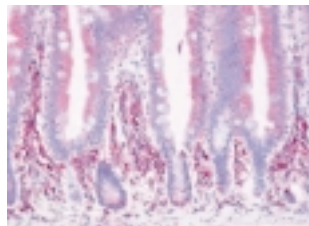
LS-A503	3rd-CD	IH		Hu
---------	--------	----	--	----

LS-A3279	3rd-ECD	IH		Hu
----------	---------	----	--	----

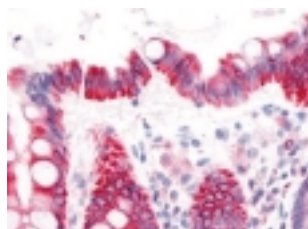
LS-A8133	3rd-CD	IH		Hu
----------	--------	----	--	----



(LS-A458) Small intestine



(LS-A503) Small intestine, Villi



(LS-A3279) Colon, Epithelium



(LS-A8133) Small intestine

## Prostaglandin E Receptor EP1

Subfamily: Prostanoid

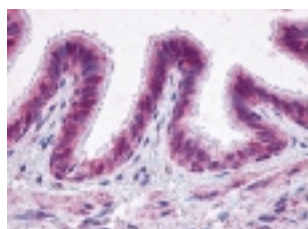
LS-A962	N-Term-ExD	IH		Hu
---------	------------	----	--	----

## Prostaglandin E Receptor EP2

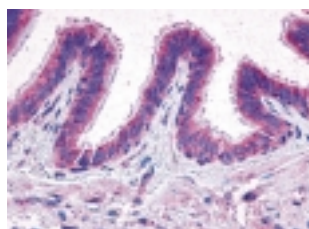
Subfamily: Prostanoid

LS-A968	N-Term-ExD	IH		Hu
---------	------------	----	--	----

LS-A971	3rd-ECD	IH		Hu
---------	---------	----	--	----



(LS-A968) Lung



(LS-A971) Lung

## Prostaglandin E Receptor EP3

Subfamily: Prostanoid

LS-A972		IH		Hu
---------	--	----	--	----

LS-A975	C-Term-D	IH		Hu
---------	----------	----	--	----

Code No.	Epitope	Application	Species	Reactivity
----------	---------	-------------	---------	------------

## Prostaglandin E Receptor EP4

Subfamily: Prostanoid

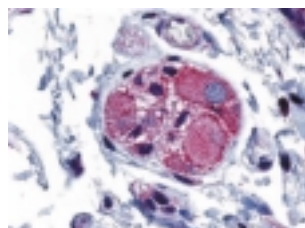
LS-A383	3rd-ECD	IC		Hu
---------	---------	----	--	----

LS-A385	C-Term-D	IH, IC		Hu
---------	----------	--------	--	----

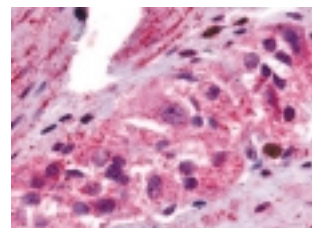
LS-A3890	C-Term-D	IH		Hu
----------	----------	----	--	----

LS-A3896	C-Term-D	IH, IC		Hu
----------	----------	--------	--	----

LS-A3898	N-Term-ExD	IH, IC		Hu
----------	------------	--------	--	----



(LS-A3890) Colon, Ganglion



(LS-A3898) Colon, Ganglion

## Prostaglandin F2-Alpha Receptor

Subfamily: Prostanoid

LS-A1048	2nd-CD	IH		Hu
----------	--------	----	--	----

LS-A1049	2nd-ECD	IH, IC		Hu
----------	---------	--------	--	----

LS-A6624	1st-ECD	IH		Hu
----------	---------	----	--	----

## Prostate-Specific G Protein-Coupled Receptor (PSGR)

Subfamily: Olfactory

LS-A2027	3rd-ECD	IH, WB		Hu
----------	---------	--------	--	----

LS-A6332	N-Term-ExD	IH		Hu
----------	------------	----	--	----

## Protein A/GPR162

Subfamily: Orphan-U

LS-A1692	1st-ECD	IH		Hu
----------	---------	----	--	----

LS-A1695	2nd-ECD	IH		Hu, Mo
----------	---------	----	--	--------

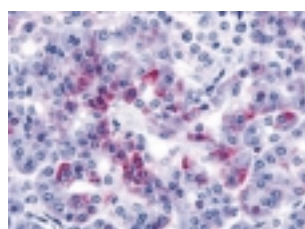
LS-A1697	6th-TMD	IH		Hu
----------	---------	----	--	----

## Proteinase-Activated Receptor 2

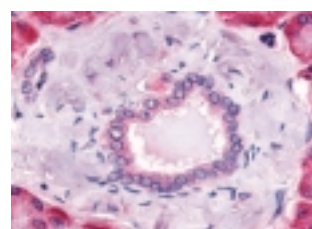
Subfamily: Proteinase-activated

LS-A252	N-Term-ExD	IH		Hu
---------	------------	----	--	----

LS-A255	C-Term-D	IH		Hu
---------	----------	----	--	----



(LS-A252) Pancreas



(LS-A255) Pancreas

## Proteinase-Activated Receptor 3

Subfamily: Proteinase-activated

LS-A260		IH		Hu
---------	--	----	--	----

LS-A261	C-Term-D	IH, IC		Hu
---------	----------	--------	--	----

Species Reactivity Hu: Human, Mo: Mouse, Mky: Monkey

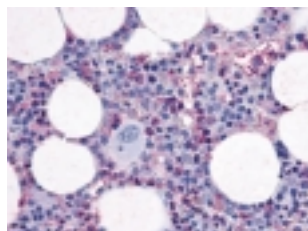
Application WB: Western blotting, IPP: Immunoprecipitation, FCM: Flow Cytometry, IC: Immunocytochemistry, IH: Immunohistochemistry, IF: Immunofluorescence

Code No.	Epitope	Application	Species	Reactivity
----------	---------	-------------	---------	------------

## Proteinase-Activated Receptor 4

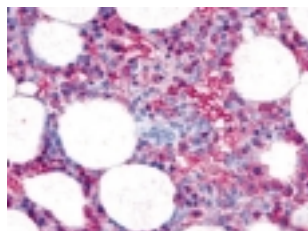
Subfamily: Proteinase-activated

LS-A1308	N-Term-ExD	IH	Hu
LS-A1309	2nd-CD	IH	Hu
LS-A1310	2nd-ECD	IH	Hu
LS-A1311	C-Term-D	IH	Hu



(LS-A1309)

Bone marrow



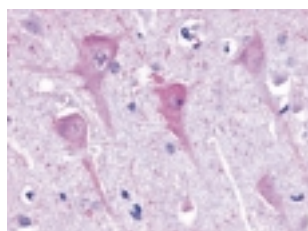
(LS-A1310)

Bone marrow

## Purinergic Receptor P2RY8

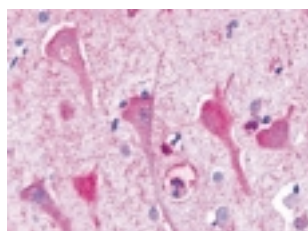
Subfamily: Orphan-A

LS-A1918	3rd-CD	IH	Hu
LS-A1919	C-Term-D	IH	Hu
LS-A1921	1st-CD	IH	Hu



(LS-A1919)

Brain, Neurons and glia



(LS-A1921)

Brain, Neurons and glia

## Purinergic Receptor P2Y1

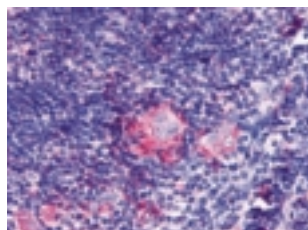
Subfamily: Purinergic

LS-A387	2nd-ECD	IH	Hu
LS-A389	C-Term-D	IH	Hu, Mo, Rat
LS-A3795	C-Term-D	IH, IC	Hu, Mo, Rat

## Purinergic Receptor P2Y5

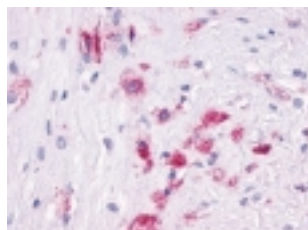
Subfamily: Purinergic

LS-A850	2nd-ECD	IH	Hu
LS-A852	C-Term-D	IH	Hu, Mo



(LS-A850)

Thymus



(LS-A852)

Macrophages

Code No.	Epitope	Application	Species	Reactivity
----------	---------	-------------	---------	------------

## Purinergic Receptor P2Y6

Subfamily: Purinergic

LS-A877	C-Term-D	IH, IC	Hu
LS-A2726	2nd-CD	IH	Hu, Rat

## Purinergic Receptor P2Y10

Subfamily: Purinergic

LS-A859	2nd-CD	IH	Hu
LS-A860	2nd-ECD	IH	Hu
LS-A862	C-Term-D	IH	Hu

## Purinergic Receptor P2Y11

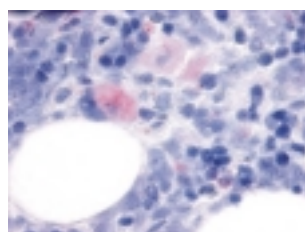
Subfamily: Purinergic

LS-A866	3rd-CD	IH	Hu
LS-A867	3rd-ECD	IH	Hu

## Purinergic Receptor P2Y12

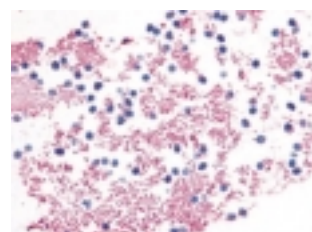
Subfamily: Purinergic

LS-A1544	3rd-CD	IH, IC	Hu
LS-A3742	N-Term-ExD	IH, IC	Hu



(LS-A1544)

Megakaryocytes



(LS-A3742)

Blood, Platelets

## Pyrimidinergic Receptor P2Y4

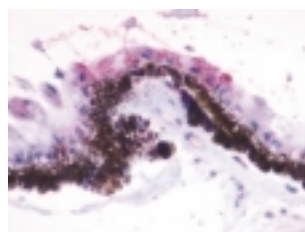
Subfamily: Purinergic

LS-A5011	1st-CD	IH	Hu
LS-A5021	2nd-ECD	IH	Hu

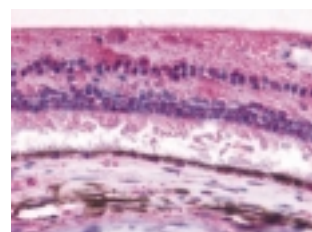
## Retinal G Protein-Coupled Receptor RPE

Subfamily: Opsin

LS-A1043	2nd-ECD	IH	Hu
LS-A1044	3rd-CD	IH	Hu



(LS-A1043) Eye, Pigmented epithelium within the retina



(LS-A1044)

Eye, Retina

Species Reactivity Hu: Human, Mo: Mouse, Mky: Monkey

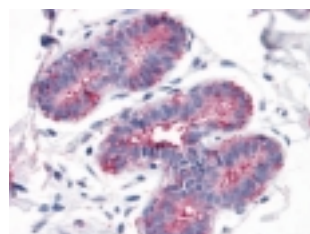
Application WB: Western blotting, IPP: Immunoprecipitation, FCM: Flow Cytometry, IC: Immunocytochemistry, IH: Immunohistochemistry, IF: Immunofluorescence

Code No.	Epitope	Application	Species Reactivity
----------	---------	-------------	--------------------

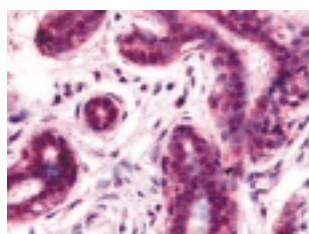
## Retinoic Acid-Induced 3 (RAI3/RAIG1)

Subfamily: Orphan-C

LS-A1220	2nd-ECD	IH, IC	Hu
LS-A1221	C-Term-D	IH, IC	Hu
LS-A1222	C-Term-D	IH, IC	Hu
LS-A3551	N-Term-ExD	IH, IC	Hu
LS-A3552	3rd-TMD	IH	Hu
LS-A3553	C-Term-D	IH, IC	Hu



(LS-A1221)



(LS-A3551)

Breast

## Rhodopsin

Subfamily: Opsin

LS-A1052	2nd-ECD	IH	Hu, Mo, Rat
----------	---------	----	-------------

## Smoothed Drosophila Homolog (SMOH)

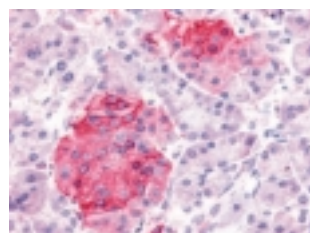
Subfamily: Frizzled

LS-A2666	N-Term-ExD	IH, WB	Hu, Mo, Rat
LS-A2668	N-Term-ExD	IH, WB	Hu, Mo

## Somatostatin Receptor Type 1

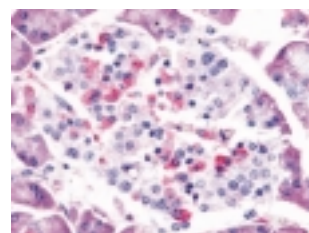
Subfamily: Somatostatin

LS-A994	N-Term-ExD	IH	Hu, Mo
LS-A996	C-Term-D	IH	Hu, Mo, Rat



(LS-A994)

Pancreas, Islets of Langerhans



(LS-A996)

Pancreas, Islet of Langerhans

## Somatostatin Receptor Type 2

Subfamily: Somatostatin

LS-A998	2nd-ECD	IH	Hu, Mo, Rat
LS-A1001	C-Term-D	IH	Hu

## Somatostatin Receptor Type 3

Subfamily: Somatostatin

LS-A2622	C-Term-D	IH	Hu
----------	----------	----	----

Code No.	Epitope	Application	Species Reactivity
----------	---------	-------------	--------------------

## Somatostatin Receptor Type 4

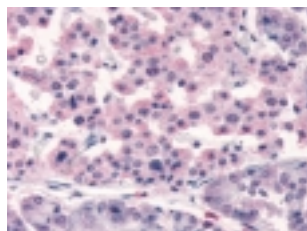
Subfamily: Somatostatin

LS-A4148	N-Term-ExD	IH	Hu
----------	------------	----	----

## Somatostatin Receptor Type 5

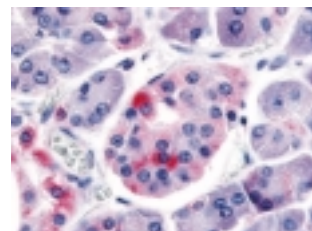
Subfamily: Somatostatin

LS-A2639	C-Term-D	IH	Hu
LS-A4419	C-Term-D	IH	Hu



(LS-A2639)

Pancreas



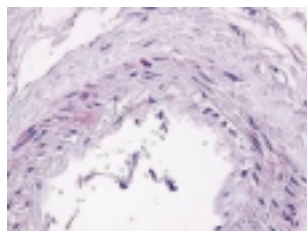
(LS-A4419)

Pancreas

## Sphingolipid Receptor Edg1/S1P1

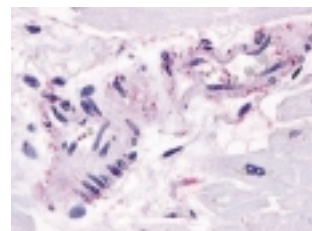
Subfamily: Lysophospholipid/Lyso sphingolipid

LS-A1012	C-Term-D	IH	Hu
LS-A1013	C-Term-D	IH, WB	Hu



(LS-A1012)

Heart, Vessel



(LS-A1013)

Heart, Vessel

## Sphingolipid Receptor Edg3/S1P3

Subfamily: Lysophospholipid/Lyso sphingolipid

LS-A1030	N-Term-ExD	IH	Hu
LS-A1031	C-Term-D	IH, IC	Hu

## Sphingolipid Receptor Edg5/S1P2

Subfamily: Lysophospholipid/Lyso sphingolipid

LS-A1018	2nd-CD	IH, IC	Hu
LS-A1019	C-Term-D	IH, IC	Hu, Mo
LS-A1021	C-Term-D	IH, IC	Hu

## Sphingolipid Receptor Edg6/S1P4

Subfamily: Lysophospholipid/Lyso sphingolipid

LS-A70	C-Term-D	IH	Hu
LS-A71	2nd-CD	IH	Hu
LS-A72	3rd-CD	IH	Hu

Species Reactivity Hu: Human, Mo: Mouse, Mky: Monkey

Application WB: Western blotting, IPP: Immunoprecipitation, FCM: Flow Cytometry, IC: Immunocytochemistry, IH: Immunohistochemistry, IF: Immunofluorescence

Code No.	Epitope	Application	Species Reactivity
----------	---------	-------------	--------------------

## Spingolipid Receptor Edg8/S1P5

Subfamily: Lysophospholipid/Lyso sphingolipid

LS-A316	2nd-CD	IH	Hu
LS-A3802	N-Term-ExD	IH	Hu, Mo, Rat

## T-Cell Death-Associated Gene 8 (GPR65)

Subfamily: Lysophospholipid/Lyso sphingolipid

LS-A1625	1st-CD	IH	Hu
LS-A1627	3rd-CD	IH	Hu

## Tachykinin Receptor 1

Subfamily: Tachykinin

LS-A1339	2nd-ECD	IH	Hu
LS-A1341	C-Term-D	IH	Hu, Rat

## Tachykinin Receptor 2

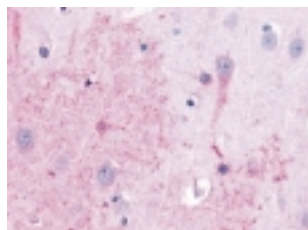
Subfamily: Tachykinin

LS-A1287	C-Term-D	IH	Hu
LS-A1288	C-Term-D	IH	Hu

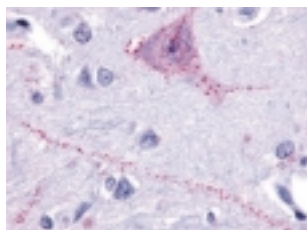
## Tachykinin Receptor 3

Subfamily: Tachykinin

LS-A1759	N-Term-ExD	IH	Hu
LS-A4043	N-Term-ExD	IH	Hu



(LS-A1759) Brain, Neurons and glia



(LS-A4043) Brain, Neurons and glia

## Thrombin Receptor

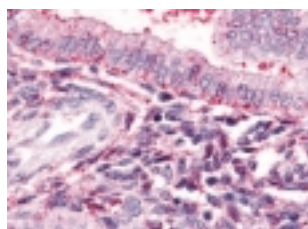
Subfamily: Proteinase-activated

LS-A2583	N-Term-ExD	IH	Hu
----------	------------	----	----

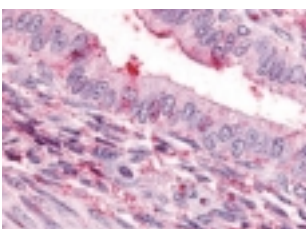
## Thromboxane A2 Receptor (TBXA2R)

Subfamily: Prostanoid

LS-A1277	2nd-CD	IH	Hu
LS-A1278	3rd-CD	IH	Hu
LS-A1280	C-Term-D	IH	Hu



(LS-A1277) Uterus, Endometrium



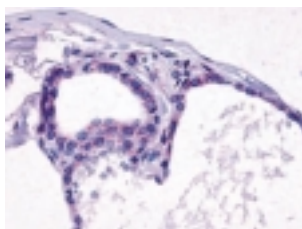
(LS-A1278) Uterus, Endometrium

Code No.	Epitope	Application	Species Reactivity
----------	---------	-------------	--------------------

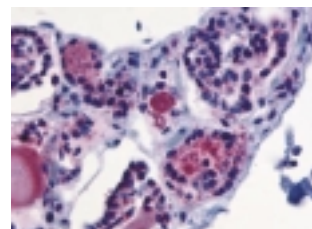
## Thyrotropin (TSH) Receptor

Subfamily: Glycoprotein hormone

LS-A1445	N-Term-ExD	IH	Hu
LS-A1446	N-Term-ExD	IH	Hu
LS-A1449	C-Term-D	IH	Hu
LS-A1450	C-Term-D	IH	Hu



(LS-A1445) Thyroid, Follicular epithelium



(LS-A1449) Thyroid, Follicular epithelium

## Thyrotropin-Releasing Hormone Receptor (TRH-R)

Subfamily: Releasing hormone

LS-A1196	3rd-CD	IH	Hu, Mo, Rat
LS-A1198	C-Term-D	IH	Hu, Mo, Rat
LS-A1200	C-Term-D	IH	Hu

## Trace Amine Associated Receptor 1 (TAAR1/TA1)

Subfamily: Trace amine

LS-A2041	3rd-CD	IH, WB	Hu, Rat, Mky
LS-A2042	2nd-ECD	IH, WB	Hu, Rat

## Trace Amine Associated Receptor 2 (TAAR2/GPR58)

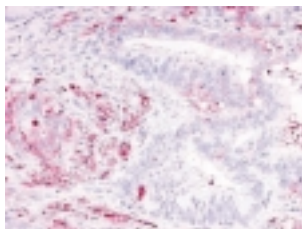
Subfamily: Trace amine

LS-A326	3rd-CD	IH	Hu
LS-A380	C-Term-D	IH	Hu

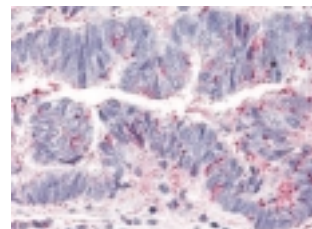
## Trace Amine Associated Receptor 3 (TAAR3/GPR57)

Subfamily: Trace amine

LS-A327	N-Term-ExD	IH	Hu
LS-A330	1st-ECD	IH	Hu



(LS-A327) Colon, Carcinoma



(LS-A330) Colon, Carcinoma

## Trace Amine Associated Receptor 5 (TAAR5)

Subfamily: Trace amine

LS-A319	2nd-ECD	IH	Hu
LS-A320	3rd-CD	IH	Hu

Species Reactivity Hu: Human, Mo: Mouse, Mky: Monkey

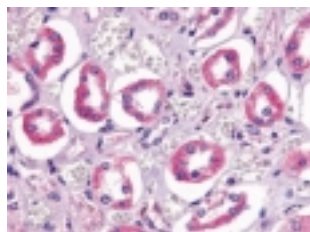
Application WB: Western blotting, IPP: Immunoprecipitation, FCM: Flow Cytometry, IC: Immunocytochemistry, IH: Immunohistochemistry, IF: Immunofluorescence

Code No.	Epitope	Application	Species	Reactivity
----------	---------	-------------	---------	------------

## Trace Amine Associated Receptor 6 (TAAR6)

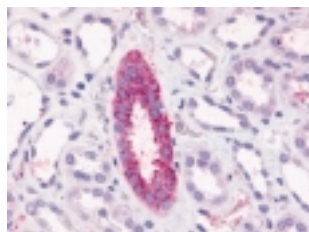
Subfamily: Trace amine

LS-A2312	3rd-CD	IH	Hu	
LS-A2313	C-Term-D	IH	Hu	



(LS-A2312)

Kidney, Renal tubules



(LS-A2313)

Kidney, Renal tubules

## Trace Amine Associated Receptor 8 (TAAR8/GPR102)

Subfamily: Trace amine

LS-A2307	3rd-CD	IH	Hu	
LS-A2314	N-Term-ExD	IH	Hu	

## Trace Amine Associated Receptor 9 (TAAR9/TA3)

Subfamily: Trace amine

LS-A1969	2nd-ECD	IH	Hu, Mo, Rat	
LS-A2573	C-Term-D	IH	Hu	

## Tumor Endothelial Marker 5 (TEM5/GPR124)

Subfamily: Orphan-U

LS-A2167	N-Term-ExD	IH	Hu	
LS-A2171	N-Term-ExD	IH	Hu	

## Urotensin-II Receptor (GPR14)

Subfamily: Urotensin

LS-A372	3rd-CD	IH	Hu, Rat	
LS-A374	C-Term-D	IH	Hu	

## Vasoactive Intestinal Polypeptide Receptor 1

Subfamily: Vasoactive intestinal polypeptide

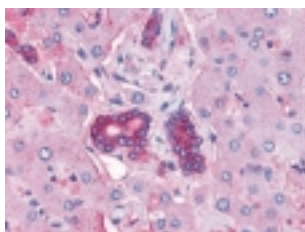
LS-A1296	1st-ECD	IH	Hu	
LS-A1297	3rd-CD	IH	Hu	
LS-A1298	C-Term-D	IH	Hu	

Code No.	Epitope	Application	Species	Reactivity
----------	---------	-------------	---------	------------

## Vasoactive Intestinal Polypeptide Receptor 2

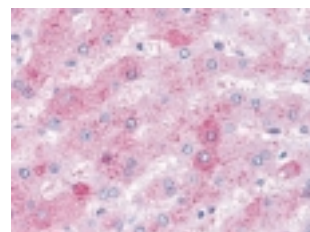
Subfamily: Vasoactive intestinal polypeptide

LS-A1305	C-Term-D	IH	Hu	
LS-A1306	C-Term-D	IH	Hu	



(LS-A1305)

Liver and bile ducts



(LS-A1306)

Liver

## Vasopressin V1B Receptor

Subfamily: Vasopressin/oxytocin

LS-A266	N-Term-ExD	IH	Hu, Rat	
LS-A3737	C-Term-D	IH	Hu	
LS-A3739	3rd-CD	IH	Hu	

## Vasopressin V2 Receptor

Subfamily: Vasopressin/oxytocin

LS-A272	3rd-CD	IH	Hu, Mo, Rat	
LS-A273	C-Term-D	IH	Hu	

## Very Large G Protein-Coupled Receptor-1

Subfamily: Orphan-A

LS-A1727	N-Term-ExD	IH	Hu	
LS-A1729	N-Term-ExD	IH, WB	Hu	

## Vomeronasal 1 Receptor 1 (VN1R1)

Subfamily: Pheromone

LS-A3458	1st-CD	IH	Hu	
LS-A3460	2nd-ECD	IH	Hu	
LS-A3461	3rd-ECD	IH	Hu	
LS-A3462	C-Term-D	IH	Hu	

## Xenotropic And Polytopic Retrovirus Receptor (XPR1)

Subfamily: Orphan-U

LS-A2672	C-Term-D	IH, IC	Hu	
LS-A2674	N-Term-ExD	IH, IC	Hu	

Visit our website at [www.mblintl.com](http://www.mblintl.com) for more information!

038072-6081

MBL Group

**MBL**<sup>®</sup>

International Corporation

**MBL International Corporation**

15 B Constitution Way  
Woburn, MA 01801, USA

TEL : (781) 939-6964  
(800) 200-5459  
FAX : (781) 939-6963

URL: <http://www.mblintl.com> e-mail: [info@mbintl.com](mailto:info@mbintl.com)

**MBL**<sup>®</sup>

**MEDICAL & BIOLOGICAL LABORATORIES CO., LTD.**

5-10 Marunouchi 3 chome, Naka-ku,  
Nagoya 460-0002, JAPAN

TEL : 81-52-971-2081 FAX : 81-52-971-2337

URL: <http://www.mbl.co.jp>