

LABORATORY DIAGNOSIS OF HAEMATOLOGICAL MALIGNANCIES

16 NOVEMBER 2016

THE HATTON, LONDON, EC1N 8HN

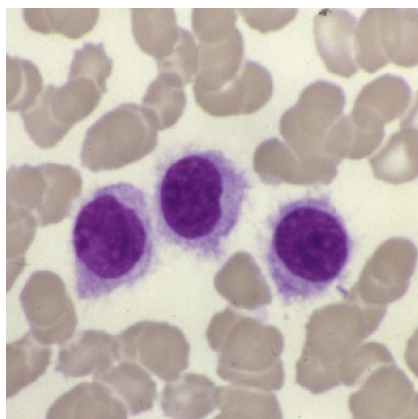
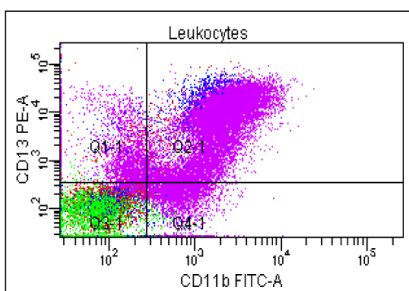


The 2016 Laboratory Diagnosis of Haematological Malignancies Meeting, from the RMS, will cover the up to date developments in techniques, analysis, interpretation and integration of Haemato-Oncology laboratories data with a number of informative and educational talks by invited experts in HMDS laboratories.

With Professor Barbara Bain as the Keynote Speaker, this year's meeting will focus on leukaemia & lymphoma diagnosis, including flow cytometry, morphology and molecular testing with examples of typical and unusual cases. There will also be comments and information of the ESCCA meeting in Edinburgh.

The meeting is aimed at laboratory staff working on Immunophenotyping and molecular diagnostics as well as junior doctors with interest in general Haematology and Haemato-Oncology in particular.

There will be an exhibition running alongside the meeting and plenty of networking opportunities, making it an event you can't afford to miss.



EVENT PROGRAMME

09:00 Registration

10:00 NGS role in Haemato-Oncology Diagnosis
Dorte Wren

10:45 Interesting Cases Presentation
Stephen Couzens

11:30 The use of novel markers in B-LPD
Ricardo Morilla

12:00 Lunch & Exhibition

13:00 Flow cytometry immunophenotyping in bone marrow failure work-up (or MDS diagnostic work-up): How I work a case
Ulrika Johansson

13:45 Should we put microscopes on eBay?
Barbara Bain

14:30 Measurement uncertainty, verification & validation and traceability
Sue Alexander

15:20 Coffee & Exhibition

15:50 Expansion of consensus group for PNH testing
Dan Payne

16:30 Pitfalls performing CD34 enumeration
David Bloxham

17:00 Closing Remarks
Ricardo Morilla

REGISTRATION

£50 - Student Rate
£80 - RMS Member Rate
£90 - Standard Rate

Find out more and register
www.rms.org.uk/lab-diagnosis-2016